



**HONEYWELL  
FORGE**

Performance<sup>+</sup>

# STREAMLINE WORKFLOWS. IMPROVE PRODUCTIVITY.

Honeywell Forge Performance+ for Distribution Centers

*Workforce Intelligence*



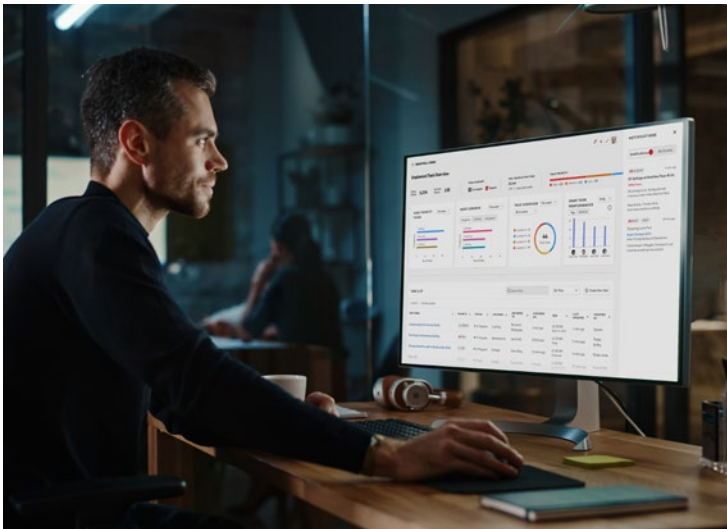
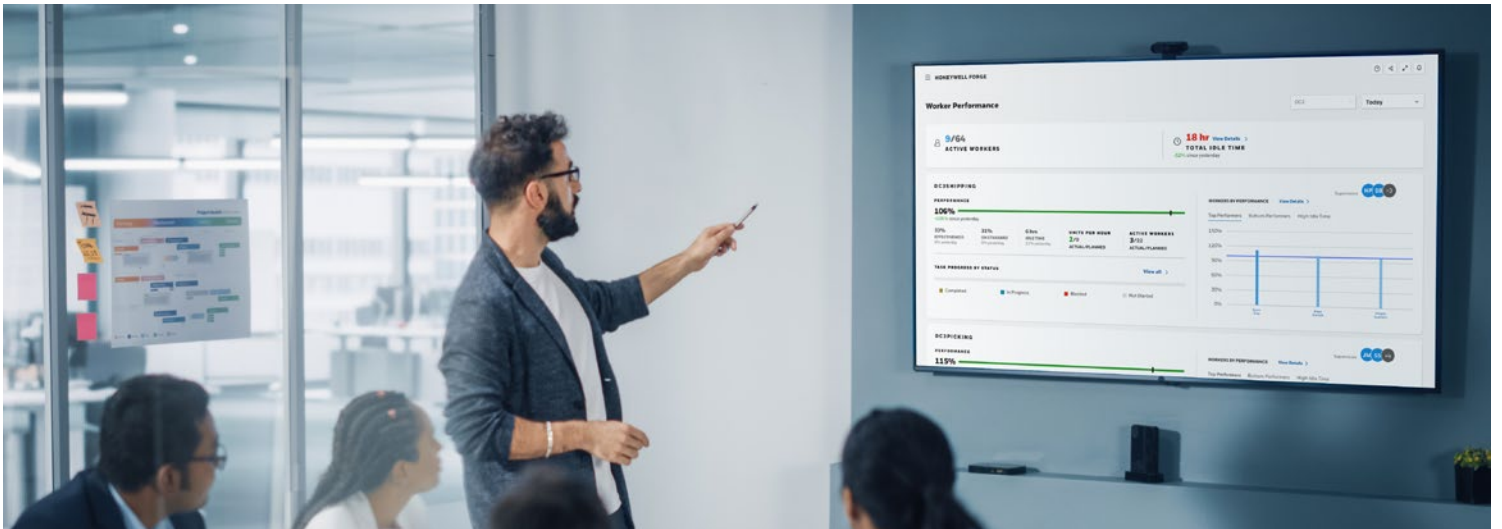


## NAVIGATE UNPLANNED TASKS WITH SOFTWARE THAT INCREASES WORKER PRODUCTIVITY AND GIVES LEADERS BETTER VISIBILITY

In maintenance, distribution centers and retail operations, smart leaders know to expect the unexpected. Whether a warehouse manager is responding to a spill two buildings over, or an influx of online orders requires a quick response from the staff at a brick-and-mortar location, reacting to changing conditions and assigning tasks to the right worker at the right time is critical to a successful operation.

Honeywell Forge Performance+ for Distribution Centers | Workforce Intelligence (WFI) is the ultimate enterprise performance management solution. By leveraging a cloud-based suite of tools, WFI mines workforce data to deliver real-time analytics and insights, improving worker performance and productivity while automating workflows for unplanned tasks.

Configurable task creation and allocation allow leaders to assign the right task to the right worker at the right time; create task templates for both standard and off-standard activities using logic like time standards, requisite skills or units per hour. Vendor-agnostic OT and IT systems connectivity provide a cohesive, robust look into worker performance insights that help leaders right-size operations, provide relevant worker training, and improve the quality, safety, and productivity of their workforce — anytime, anywhere.



## FULLY CONFIGURABLE INTERFACE

**Create New Task** Create

Category  
Collect

Task  
Select template

- Search template
- Collect empty ULD's from [Location]
- Collect empty Bins from [Location]
- Collect empty [Asset] from [Location]

**Create New Task** Create

Task Title  
Collect empty ULD's from [Location]

Assigned to  
Mary Jane X Peter Drake X

Individual to be notified - Optional  
Tim Frost X Sarah Olsen X

Location details

Primary Location - Optional  
Aisle - Optional

Bay - Optional

Level - Optional

Destination Location - Optional  
Aisle - Optional

**Task Details**

HIGH INPROGRESS

Collect empty ULD's

Details Location & Asset details

Assigned to Janace Bing

Last updated 14 Jan 2022, 02:49 EST

Due In 30 Minutes

Task progress details

- Task Created 03-23-2021 1:48 EST
- Task Accepted 03-23-2021 1:48 EST
- Task Started 03-23-2021 1:48 EST

New task - 'Collect empty ULD's from Machine Floor 141(Bay)' has been created successfully.

**Task List** + Create Task

Filter Sort

HIGH INPROGRESS

Collect empty ULD's

Category - Oil Spillage

Assigned to - Tracy Walker

Due in - 2 hours 30 minutes

HIGH INPROGRESS

Cleanup hazardous spill at Machine...

Category - Oil Spillage

Assigned to - Tracy Walker

Due in - 30 minutes

MEDIUM NOT STARTED

Collect empty ULD's

Destination - Sort facility

Due - 15 mins

Home Notifications Tasks More

### Unique Task Templates

Create templates for both standard and off-standard activities to better communicate assignments to workers.

### Task Standards

Apply logic to tasks – like time standards, requisite skills, or units per hour – to ensure the task is assigned to a worker best fit for the individual job.

### Host System Connectivity

Connect Workforce Intelligence to IT (WMS, LMS, ERP, CMMS) OT (assets/ devices) and existing labor management systems to create a more robust picture of a workforce's productivity.

### Unified Enterprise View

Consolidate data from multiple sites and systems into one dashboard for top-down visibility into multiple sites, buildings, and areas.

### Expert Professional Services

Honeywell Forge specialists will work hand-in-hand with you to integrate WFI into your existing systems and create worker profiles, task standards, and incident reporting.

### Persona-Based User Experience

Tailor user interface to fit workers' unique jobs, skills and preferences. Supervisors can use their own user interface to customize displayed metrics and worker profile information.

## REAL-TIME DATA, REAL-TIME RESPONSES

### Mobile Task Allocation

Assign tasks to workers from anywhere in an organization based on their skill and location, reducing travel downtime for supervisors and employees.

---

### Compare Against Your Plan

Dashboard insights show how a workforce's performance measures up against sitewide plans, so leaders can allocate surprise tasks without losing sight of KPIs.

---

### Insights On-The-Go

Review individual tasks and worker performance from a mobile device to quickly identify needs and react.

---

### In-Task Help

Workers can notify supervisors of issues during tasks using text, attachments, and photos.

---

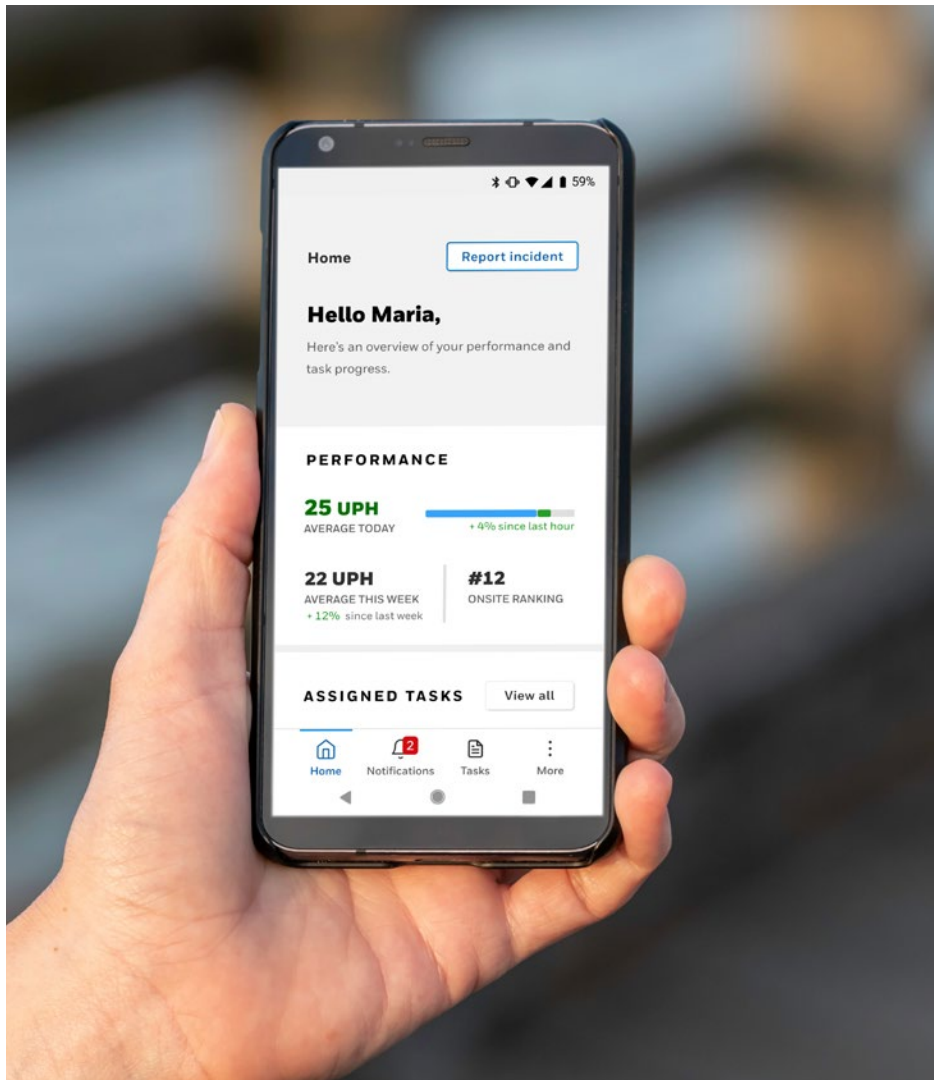
### Incident Templates

Configurable incident templates allow leaders to create incidents for common workflow interruptions, like when an asset falls below a KPI or a delivery truck arrives late.

---

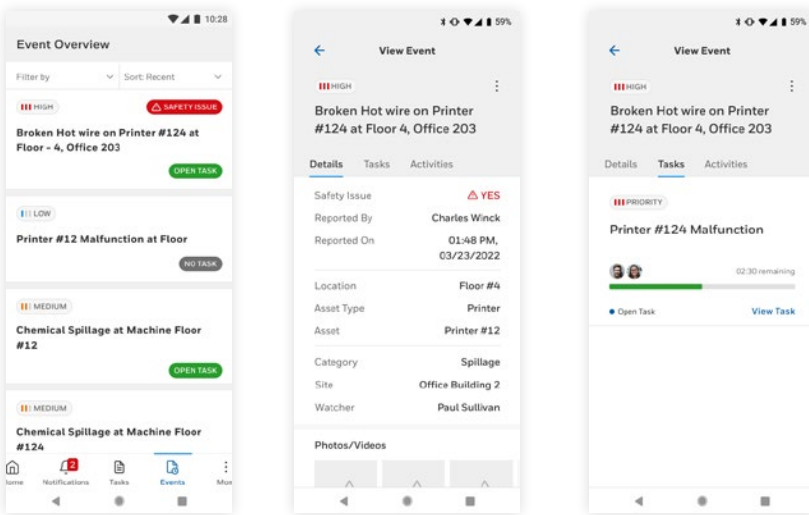
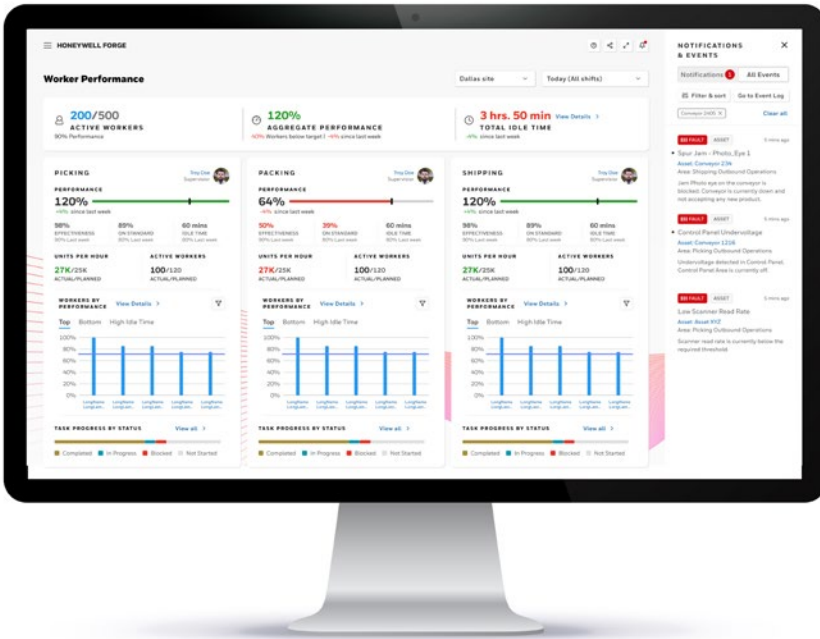
### Incident Reporting

Report changes to an incident situation via mobile device, then initiate workflows in response to an incident from OT/IT system desktops in real time. Or, set up automated incident triggers when you integrate Workforce Intelligence with host or third party systems.





# GET TO KNOW YOUR WORKFORCE



The information contained in this document should not be construed as a legal opinion or advice. While efforts have been made to ensure that the information is accurate and useful, Honeywell International Inc. and its affiliates are not responsible for any errors, inaccuracies, or omissions in this document or for the consequences of any actions taken on the basis of this information. Honeywell does not provide legal advice or represent or warrant that its services or products will ensure that customers are compliant with applicable laws. This document is a non-binding, confidential document that contains valuable proprietary and confidential information of Honeywell and must not be disclosed to any third party without our written agreement. It does not create any binding obligations on us to develop or sell any product, service or offering. Content provided herein cannot be altered or modified and must remain in the format as originally presented by Honeywell. Any descriptions of future product direction, intended updates or new or improved features or functions are intended for informational purposes only and are not binding commitments on us and the sale, development, release or timing of any such products, updates, features or functions is at our sole discretion.

## Honeywell Connected Enterprise

715 Peachtree Street NE  
Atlanta, Georgia 3030  
www.honeywellforge.ai

Brochure | Rev | 09/2023  
© 2023 Honeywell International Inc.

## Worker Profiles

Individual worker profiles track real-time performance data, including skills, certifications, and preferences, enabling optimal task assignments.

## Performance Benchmarks

View employee task performance and compare against configurable time benchmarks to understand where workers thrive and where there are opportunities to improve.

## Individual KPIs

Integrate existing software systems and define success parameters down to an individual worker level. Leaders can use low KPIs to determine future training or coaching opportunities for team members.

## Idle Time Insights

Real-time updates on idle time during shifts assist in right-sizing schedules and reducing labor costs.

## Increase Employee Retention

Assigning workers tasks that fit their skills and interests can help make tough jobs more enjoyable.

Ready to implement a workforce solution that helps you improve the quality, efficiency, safety, and performance of your workforce? Contact your Honeywell sales rep, or visit [honeywellforge.ai](https://www.honeywellforge.ai)

Honeywell® and Honeywell Forge® are registered trademarks of Honeywell International Inc.

Other brand or product names are Honeywell Connected Enterprise trademarks of their respective owners.

**Honeywell**