



Application Brief

POWER UP YOUR RETAIL GAME

Transform Printing Efficiency with
Honeywell PC41E-D and PC42E-D

Honeywell

HONEYWELL PC41E-D AND PC42E-D DESKTOP PRINTERS

In a dynamic retail environment shaped by eCommerce, accurate printing solutions are critical for ensuring smooth and efficient operations. Barcodes are essential for tracking inventory, expediting order fulfillment, and minimizing errors during the picking, packing, and shipping processes. When barcodes are printed with precision, retailers can maintain real-time visibility over their stock levels, reduce mis-scans at the point of sale, and enable seamless returns and exchanges.

As customers demand swift service and error-free delivery, any inaccuracies in barcode or in-store printing can lead to delayed deliveries, incorrect orders, or dissatisfied shoppers. Reliable barcode printing supports automation and integration with inventory management systems, helping retailers to achieve fast, accurate, and reliable printing, aimed at fulfilling and exceeding customer expectations.

The Honeywell PC41E-D and PC42E-D desktop printers are designed specifically for the retail environment, offering a fusion of modern design and exceptional functionality. Both printers are crafted to accommodate entry-level to mid-range printing needs, ensuring that businesses can maintain operational efficiency while adding a touch of elegance to their in-store setups.

MEETING DYNAMIC RETAIL DEMANDS

As consumers seek instant gratification, retail businesses are pressed to optimize every aspect of their service delivery. Delays caused by inadequate printing solutions, inefficient label management, or low-quality outputs can result in dissatisfied customers and low NPS rates. Retail environments require printers that excel under pressure, producing everything from price tags to parcel labels without compromising on quality.

With the introduction of the PC41E-D and PC42E-D, retail operations can transform their workflow. The striking white option of the PC42E-D, caters to high-end fashion retailers, providing a chic and modern aesthetic that aligns with luxury branding. Conversely, the sleek black model serves industries where durability and a professional appearance are paramount, such as DIY and parcel shops.

Managing diverse printer models across multiple retail locations can present challenges, including security

risks and operational inefficiencies. Retailers need an intelligent printing solution that offers not only robust performance but also integrates seamlessly into their tech ecosystems.

SEAMLESS PRINTING, SUPERIOR SERVICE: THE HONEYWELL ADVANTAGE

Engineered with state-of-the-art technology, the PC41E-D and PC42E-D printers stand as powerful tools for enhancing retail operations. Built on



the Honeywell Printer Edge™ platform, these printers deliver efficient and reliable printing solutions designed for high-quality service delivery.

The compact design of the PC41E-D and PC42E-D ensures they fit elegantly into various retail environments without sacrificing performance. The user-friendly interface allows for seamless operation, while the optional advanced features of the PC42E-D, such as a cutter and peeler, streamline label production for promotions and inventory management. Both models can print individual labels or batch jobs, up to 1,000 labels per day, catering to the diverse needs of retail associates.

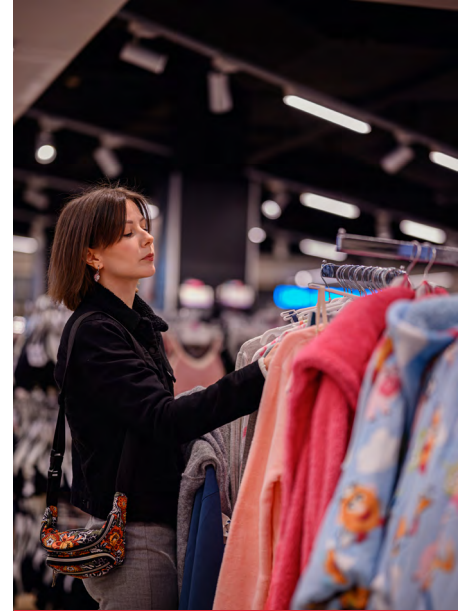
By leveraging direct thermal printing technology, these printers ensure that receipts and labels are produced with exceptional clarity and speed, addressing customer expectations for convenience and quick delivery. Moreover, the connectivity options – USB for the PC41E-D and expanded network capabilities (USB, Ethernet, Serial, Wi-Fi) for the PC42E-D – enable easy integration into existing systems, minimizing downtime and enhancing operational efficiency.

ALL-IN-ONE PRINTING SOLUTION

Honeywell Printer Edge™ technology enhances the usability and effectiveness of both printer models. This integrated platform simplifies network connectivity, fortifies data security, and streamlines printer management across different sales locations. Retailers can enjoy remote configuration and monitoring, reducing the need for on-site troubleshooting and ensuring a proactive approach to maintenance.

CONTINUED LEGACY

The PC41E-D and PC42E-D are the latest additions to Honeywell's legacy of delivering reliable and efficient printing solutions. Retailers can rest assured that these models support a comprehensive range of accessories and features, including the vital ability to work with both adhesive and non-adhesive labels, paper, and the sophisticated capabilities offered by compatible accessories.



ELEVATE CUSTOMER EXPERIENCES

Honeywell understands the high stakes of retail service. Our innovative desktop printers are designed to enhance workflows, reduce errors, and allow associates to focus on what matters most – ensuring customer satisfaction. By streamlining processes related to pickups, returns, and checkout, the PC41E-D and PC42E-D help create a more enjoyable and efficient work environment.

Discover how Honeywell can be your trusted partner in advancing dynamic commerce. We specialize in refining printing processes and enhancing retail operations, ultimately empowering customer engagement. Let us help you elevate the customer experience today.

For more information

automation.honeywell.com

Honeywell Industrial Automation

855 South Mint Street

Charlotte, NC 28202

800-582-4263

www.honeywell.com

PC41E-D and PC42E-D Application Brief | Rev A | 09/25
© 2025 Honeywell International Inc.

Honeywell