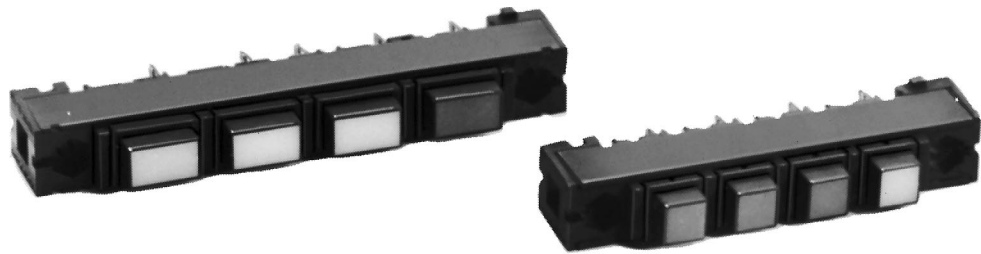


# Manual Switches

## Strip Mounting Frames

MML61 Series



**MML61 ORDER GUIDE**

**MML61K**

Orientation/Color
<b>For Rectangular* Housings:</b>
<b>MML61K</b> Horizontal strip, black
<b>MML61G</b> Vertical strip, black
<b>For Square Housings</b>
<b>MML61J</b> Black

\* \* .4" x .6" housings only.

**5**

No. of Stations
<b>1</b> One
<b>2</b> Two
<b>3</b> Three
<b>4</b> Four
<b>5</b> Five
<b>6</b> Six
<b>7</b> Seven
<b>8</b> Eight
<b>9</b> Nine
<b>10</b> Ten

Note: Switches and indicators are ordered as separate items.

- FEATURES**
- Provides back of panel or printed wiring board mounting in a multi-unit strip of switches/indicators.
  - Devices can be pre-wired prior to installation.
  - Holes at each end of frame will accept No. 4 screws.
  - Can be used for pushbutton or rocker type switches.

**Example: MML61K5**  
Black 5-station strip mounting frame, horizontal orientation.

Manuals