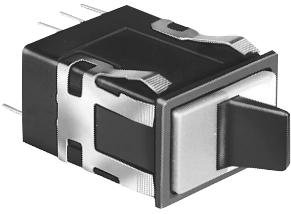


Manual Switches

Electronic Control Paddle

INCANDESCENT OR NON-LIGHTED DISPLAY



Covers ordered separately.

FEATURES

- Silver or gold contacts.
- 1, 2 or 4 poles.
- Toggle type paddle operators permanently installed in rectangular housings.
- Covers for the switch housing may be lighted or unlighted.
- UL recognized, CSA certified.
- Lamps can be furnished installed or ordered separately.
- Lamp circuit independent of switch circuit.

| | |
|---------------------|--------------|
| Electrical Data | page 19 |
| Paddle Covers | page 47 |
| Lamps and LEDs | page 58 |
| Accessories | page 57 |
| Mounting Dimensions | pages 59, 62 |

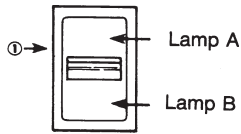


*AML23 Series: 1 pole and 2-pole only.

*AML23 ORDER GUIDE

| AML23 E | B | A | 2 | AA | 01 |
|--|-------------------------|---|---|--|---|
| Housing Type | Operator/Bezel Color | Incandescent Lamp Type | Terminal Type | Circuitry Codes | Operating Action |
| AML23 E Rectangular Non-Lighted AML23 F Rectangular 1 Lamp Ckt. (A) AML23 G Rectangular 2 Lamp Ckts. (A & B) | B Black/Black | A No Lamp Installed B 6 V Lamp* C 14 V Lamp* E 28 V Lamp* | 2 .110 × .020 (Solder or Quick-Connect) 3 .025 × .025 (Printed Ckt., or Push-on) | Insert Code letters as shown in Circuitry Chart | Insert Code numbers from Operating Action Chart |

* Lamps will be installed per each lamp circuit specified in the Housing Type.



① The "MICRO SWITCH" identification is shown on this side of the switch housings.

Example: **AML23EBA2AA01**

Rectangular non-lighted paddle switch housing; black paddle and bezel; .110 × .020 terminals; with one circuit ON and one circuit OFF in each extreme operator position (maintained).

CIRCUITRY

| Silver Contacts | Gold Contacts | 2-Position | | 3-Position | | |
|---------------------------------|---------------|------------|--|------------|--|--|
| AA | BA | | | | | |
| AC | BC | | | | | |
| (Non-illuminated switches only) | | | | | | |
| CA | DA | | | | | |
| CC | DC | | | | | |
| (Non-illuminated switches only) | | | | | | |

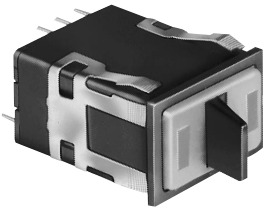
OPERATING ACTION

| 2-Position: | | |
|-------------|---------------------|--------|
| Maint. | 01 None | Maint. |
| Mom. | 02 None | Maint. |
| Maint. | 03 None | Mom. |
| 3-Position: | | |
| Maint. | 04 Maint. | Maint. |
| Mom. | 05 Maint. | Mom. |
| Maint. | 06 Maint. | Mom. |
| Mom. | 07 Maint. | Maint. |

Manual Switches

Electronic Control Paddle

LED DISPLAY



Covers with LED "window" ordered separately.

FEATURES

- Identical to AML23, except furnished with one or two rectangular high efficiency LED's which give flush display area and wide angle indication.
- Available with or without diode protection for LED's.
- LED circuit independent of switch circuit.

| | |
|---------------------|--------------|
| Electrical Data | page 19 |
| Paddle Covers | page 48 |
| Lamps and LEDs | page 58 |
| Accessories | page 57 |
| Mounting Dimensions | pages 59, 62 |

- 5 thru 24 VDC devices have internal resistor to maintain current at nominal 20 mA.
- UL recognized, CSA certified.



*AML25 Series: 1 pole and 2-pole only.

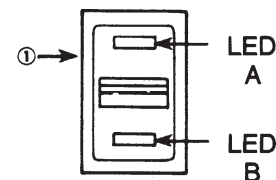
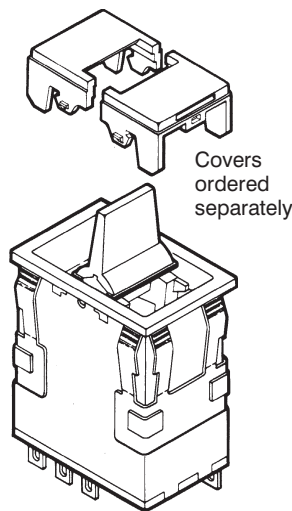
AML25 ORDER GUIDE

| Housing Type | Operator/ Bezel Color | LED Voltage | Terminal Type/ Diode Protection | Circuitry Codes | Operating Code | LED Color (LED A) | LED Color (LED B) |
|--|-------------------------|------------------|---|---|---|--------------------|--------------------|
| AML25 F Rectangular 1 LED | B Black/Black | B V* | 2 .110 × .020 (Solder or Q-C) | Insert code letters as shown in Circuitry Chart | Insert code numbers from Operating Action Chart | R Red | R Red |
| AML25 G Rectangular 2 LED's | | C 5 V | 3 .025 × .025 (Printed Ckt., or Push-On) | LED version available only with | | Y Yellow | Y Yellow |
| | | D 10 V | 8 .110 × .020 w/Diode protection | AA | | G Green | G Green |
| | | E 15 V | | BA | | X No LED | X No LED |
| | | F 24 V | | CA | | | |
| | | | | DA | | | |

*See LED application information for devices without current-limiting resistor, page 58.

Example: **AML25FBB2AA01RX**
Rectangular paddle switch; illuminated with one red LED, this device has a black paddle and bezel, and .110 × .020 terminals; with one circuit ON and one circuit OFF in each extreme operator position (maintained).

NOTE: For further information on replacement LED's, call the 800 number.



① The "MICRO SWITCH" identification is shown on this side of the switch housings.

Manuals