

LIFECARE REMOTE HEALTH MONITORING

Datasheet

LIFECARE REMOTE HEALTH MONITORING

Intelligent Life Care (ILC) integrates Honeywell world-class, proven technology and design solutions to connect hospitals, clinicians and patients with leading-edge communication technologies, smart sensors, internet of things, internet of medical things, advanced visualization and mobile computing platforms. These dynamic combinations create new functionalities and innovation in healthcare applications that bring superior performance and economic value to healthcare institutions globally.

Lifecare Remote Health Monitoring platform digitizes and automates time consuming and critical tasks for medical personnel during patient routine check and care administration that can help dramatically reduce administrative task time. The platform helps users ensure services provided match the real need by the caregiver, helps users increase patient safety by avoiding interrupted monitoring and supports elimination of unnecessary non-patient related activities of daily tasks. The new offering follows through with real-time monitoring of the patient while he/she recovers from medical treatment.

Lifecare Remote Health Monitoring addresses the needs of both medical personnel and patients. Caregivers can use the advanced software to have real-time and continuous visibility of patients' vital signs that is integrated online with OnPrem care organization electronic medical record and manage the care plan with high confidence of ensuring patient safety. With a non-critical patient who needs to be monitored after a surgery, the patient receives an outpatient vital sign monitoring kit to finish the treatment from home while being remotely monitored by hospital professionals.

Lifecare Remote Health Monitoring is Honeywell Care Communication platform-based mobile app for remote and real-time monitoring of patients. This platform acts as bridge between the caregiver and patient, providing real-time online integration of the patients' vital signs that can be accessed remotely by the healthcare providers.

Lifecare Remote Health Monitoring integrates with various hospital setting software systems such as EMR, HMIS, LIS to support interoperability across the organization.

APPLICATIONS

Hospital environment and home care

- Lifecare Remote Health Monitoring could be utilized for monitoring for non-critical patients
- Home health
- General ward monitoring
- Remote monitoring in COVID 19/infectious diseases
- Hospital discharged patients

Honeywell

PARAMETERS MONITORED*



Heart rate



Respiration rate



ECG



Temperature



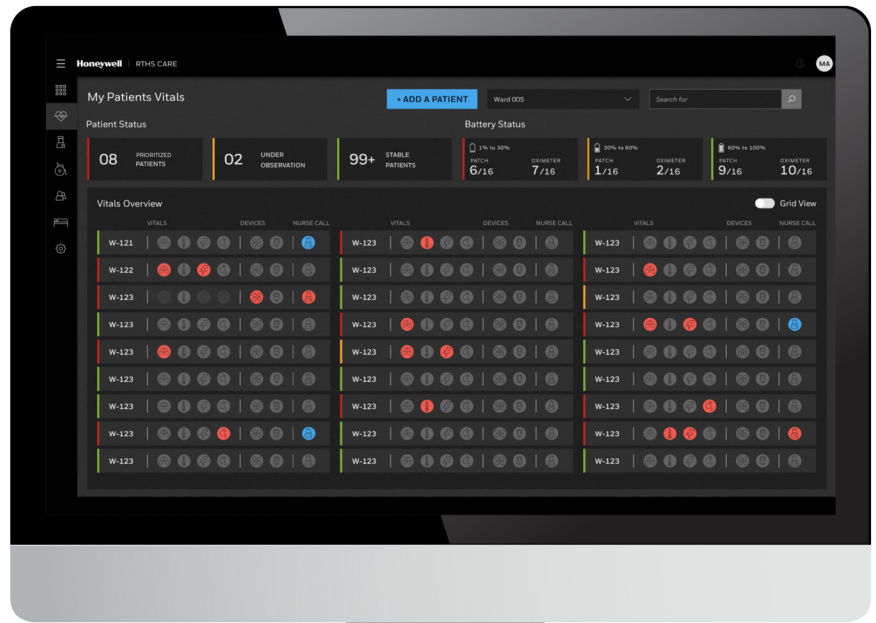
Posture

LIFECARE REMOTE HEALTH MONITORING CAPABILITIES

- Data and analytics processing
- Dashboards visualization
- Mobile application
- Notification & alarms management
- Early warning scores
- Unit view dashboard
- Grid view dashboard
- Vital trend analysis

MULTIPLE OUTCOMES

- Reduce alarm fatigue
- Automatic vital sign reading
- Easy visualization on the web dashboard/mobile device
- Reduce data redundancy and increase quality
- Increase response time during unplanned/abnormal situations



USER AND KEY BENEFITS

Caregivers – Nurses, physicians

Lifecare Remote Health Monitoring helps caregivers by providing details about a patient's vitals or even the location of key medical equipment, and/or another caregiver/support staff/physician. Intelligent alerts and actionable insights helps medical providers to focus on patients who require more attention.

Care receiver

Lifecare Remote Health Monitoring packs solutions into one offering that enables hospitals to correspond with patients' expectations. The remote vital monitoring patch allows caregivers to track patient's vitals remotely even when he/she is on the move.

Administration

Lifecare Remote Health Monitoring provides a single plane of glass view for facility operators to seamlessly manage the medical administrative activities while tracking utilization.

TECHNICAL SPECIFICATIONS

Device hub	Android™ 8+
Lifecare Remote Health Monitoring	Windows® 2012 Server R2 and above (16 GB RAM, 250 GB HDD) – 50 concurrent users
Dashboard	Latest versions of Chrome™, Firefox™, Edge™ web browsers



**⚠️ WARNING
IMPROPER
INSTALLATION**

- Consult with local safety agencies and their requirements when designing a machine control link, interface and all control elements that affect safety.
- Strictly adhere to all installation instructions.

Failure to comply with these instructions could result in death or serious injury.

WARRANTY/REMEDY

To review the Honeywell limited warranty in our Standard Terms and Conditions, please reference this link: <https://sps.honeywell.com/us/en/support/safety/legal-documents/sst>

While Honeywell may provide application assistance personally, through our literature and the Honeywell web site, it is buyer's sole responsibility to determine the suitability of the product in the application and to follow all product instructions for proper use.

Specifications may change without notice. The information we supply is believed to be accurate and reliable as of this writing. However, Honeywell assumes no responsibility for its use.

Honeywell Sensing & Safety Solutions

Intelligent Life Care
Novar GmbH
Forumstrasse 30, 41468
Neuss, Germany
www.ackermann-clino.com/en
info@ackermann-clino.com
www.honeywell.com

Android and Chrome are trademarks or registered trademarks of Google LLC in the United States and other countries.

Windows and Edge are trademarks or registered trademarks of Microsoft Corporation in the United States and other countries.

Firefox is a trademark of the Mozilla Foundation in the United States and other countries.

005282-2-EN | 2 | 08/23
© 2023 Honeywell International Inc.

Honeywell