

EV SENSING SOLUTIONS FROM HONEYWELL

Honeywell battery management sensors include a range of specialized sensors such as current sensors, aerosol sensors, pressure sensors, and electrolyte vapor sensors. These sensors are engineered specifically for effective battery management and for detecting early indications of thermal runaway in lithium-ion battery packs. By utilizing these sensors, Honeywell significantly enhances safety within both electric vehicles and energy storage systems.

CURRENT SENSORS



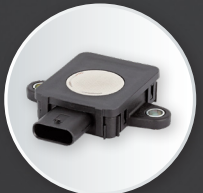
CSHV Series
Motor Control
Current Sensing



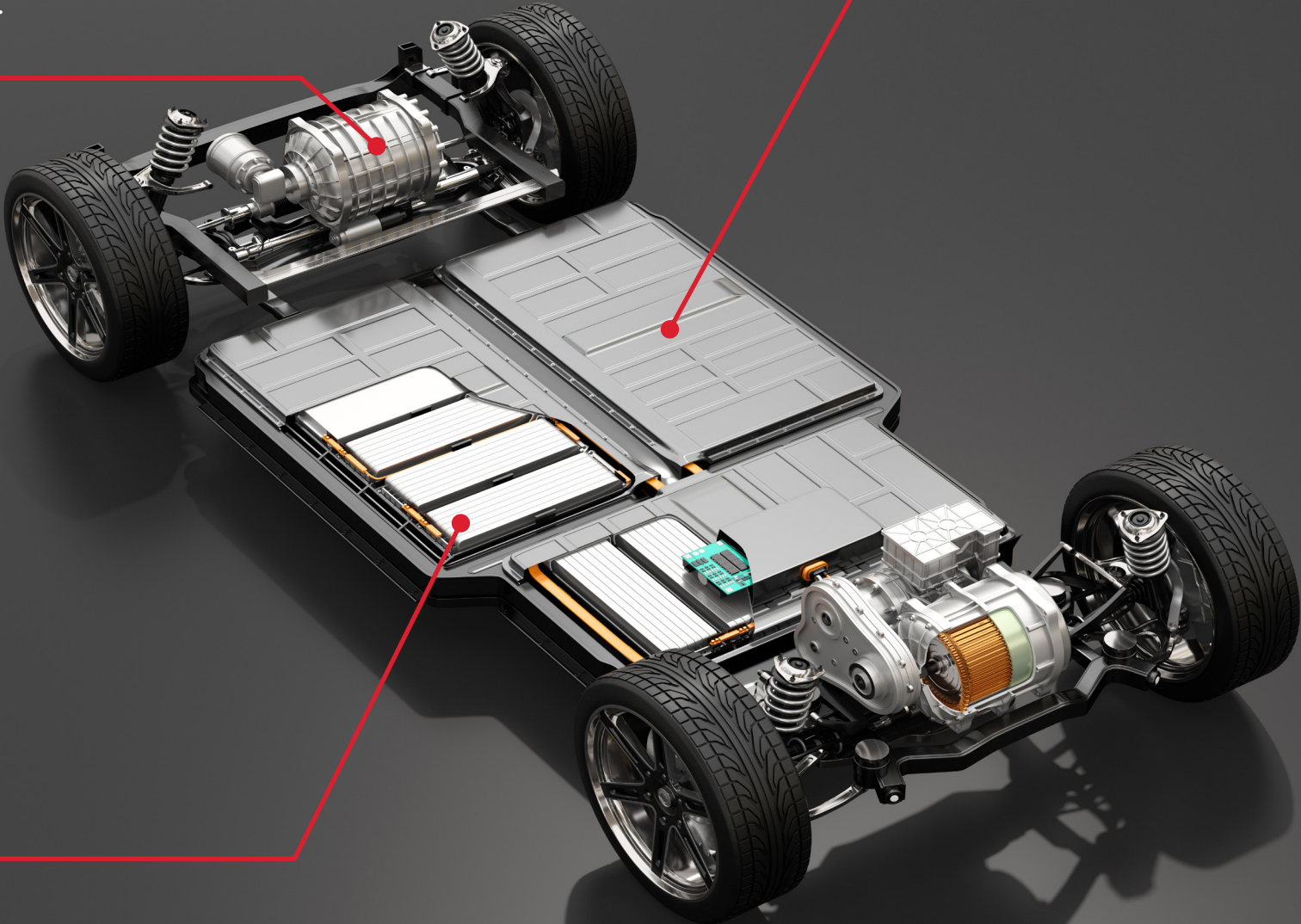
CSNV Series
Battery Management
Current Sensing



CSSV Series (ASIL-C)
Battery Management
Current Sensing



HLD Series
Hydrogen Fuel Cell
Hydrogen Leak Detection



BATTERY SAFETY SENSORS



BAS Series
(Aerosol; 4W, BESS, and
Heavy-Duty Transportation)
Thermal Runaway Detection

GEN•1



BPS Series
(Pressure; 4W and
Heavy-Duty Transportation)
Thermal Runaway Detection

GEN•1



BES Series
(Electrolyte Vapor; 4W,
Heavy-duty & Light-duty EVs,
Automotive-grade)
Early Thermal Runaway
Detection and Prevention

GEN•2

HYDROGEN SENSORS