

# EasyParse for Automotive Parts

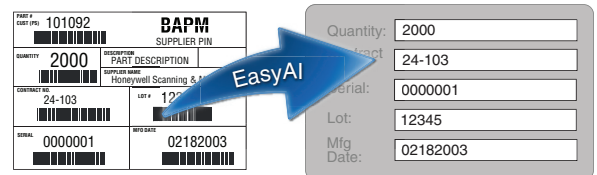
## TotalFreedom Plug-In

Honeywell's EasyParse™ for Automotive Parts (AP) software plug-in parses the bar code data on the parts components, assemblies, and modules used in the manufacturing of vehicles.

Powered by Honeywell's TotalFreedom® open-system architecture, which was created to enable development for Honeywell area-imaging scanners, EasyParse for Automotive Parts (AP) eliminates the need for host system software to process the encoded information that is used by manufacturers and suppliers for traceability and/or verification purposes.

EasyParse for Automotive Parts (AP) can be pre-installed on Xenon 1900, Xenon 1902, Vuquest™ 3310g and N5600 area-imaging scanners and engines. It can also be purchased as a standalone upgrade. After installing the plug-in, a simple programming sequence enables you to transmit any of the available data fields in any order you choose. The fields can then be separated by selecting any of the available delimiters.

Enhancing a Honeywell imager with EasyParse for Automotive Parts (AP) is an ideal solution for automotive manufacturers and suppliers who desire to improve accuracy and increase efficiency.



Compatible with the following products:	
	Xenon 1900
	Xenon 1902
	N5600
	Vuquest 3310g

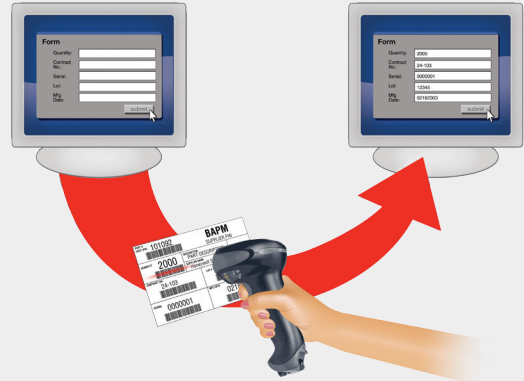
## Features

- **Offers Ease of Integration:** EasyParse for AP is installed directly on the scanner, eliminating the need to make costly and time-consuming changes to the host application software
- **Achieves Industry Compliance:** Facilitates compliance with automotive standards by configuring EasyParse for AP to recognize the data identifiers found in select bar code symbologies
- **Enables Accurate Data Capture:** Improves operations by allowing host systems to correctly capture the data encoded in select bar code symbologies through use of available data identifiers

# EasyParse for Automotive Parts

EasyParse for AP can be used by a wide variety of organizations that utilize the bar code data found on parts, components, assemblies, and modules used in the manufacturing of vehicles including:

- OEM manufacturers
- Automotive part suppliers
- Retailers
- Dealer service departments



Extracts only the desired fields from the bar codes found on part number labels

## Formatting Options

### Typical Data Fields

#### Container Type

##### Returnable Container Identification Code:

assigned by the container owner or the appropriate regulatory agency

##### Unit Load Device (ULD):

trailer, tank or intermodal container

##### Gas Cylinder Container Identification Code:

assigned by the manufacturer in conformance with the U.S. Department of Transportation DOT standard

##### Date, in the format YYMMDD

##### Date, in the format DDDMMYY

##### Date, in the format YDD

##### Date, in the format YYDDDD

**Date, in ISO format YYMMDD** immediately followed by an X12.3 Data Element Number 374 Qualifier providing a code specifying type of date (e.g. ship date, manufacturing date)

**Air Pressure** expressed in Pascal's as the standard international measure

#### US Vehicle Identification Number (VIN):

Abbreviated VIN Code (example PVI, order ID, sequence ID)

**Coding Structure and Formats** in Accordance with AI Recommendations

**Item Identification Code:** assigned by Supplier

**Code** assigned to specify the revision level of the part

**Quantity, Number of Pieces, or Amount**

**Theoretical Length/Weight**

**Actual Weight**

**Quantity and Unit of Measure in the format:** Quantity

followed by the two-character Unit of Measure code as defined in Data Element number 355 of the ANSI X12.3 Data Element Dictionary standard

**Serial Number:** assigned by Supplier to an entity for its lifetime

**Machine, Work Cell, or Tool ID Code**

**Fixed Asset ID Code**

**Traceability Number:** assigned by the Supplier/Manufacturer

**DUNS Number:** identifying Manufacturing/Assembly site

† Date fields can be transmitted as MM/DD/YYYY, MMDDYYYY, MM/DD/YY, MM-DD-YY, MMDDYY or MM-DD-YYYY.

### Field Delimiters

Comma, Tab, Carriage Return, Dollar Sign, Caret, Semi-colon

## Supported Documents

GMW15862

### For more information:

[www.honeywellaidc.com](http://www.honeywellaidc.com)

## Available Field Delimiters

### ASCII Character Set

NUL	LF	DC4	RS	(	2	<	F	P	Z	d	n	x
SOH	VT	NAK	US	)	3	=	G	Q	[	e	o	y
STX	FF	SYN	SP	*	4	>	H	R	\	f	p	z
ETX	CR	ETB	!	+	5	?	I	S	]	g	q	{
EOT	SO	CAN	"	,	6	@	J	T	^	h	r	
ENQ	SI	EM	#	-	7	A	K	U	_	i	s	}
ACK	DLE	SUB	\$	.	8	B	L	V	'	j	t	~
BEL	DC1	ESC	%	/	9	C	M	W	a	k	u	DEL
BS	DC2	FS	&	0	:	D	N	X	b	l	v	
HT	DC3	GS	'	1	;	E	O	Y	c	m	w	

## Honeywell Scanning & Mobility

9680 Old Bailes Road

Fort Mill, SC 29707

800.582.4263

[www.honeywell.com](http://www.honeywell.com)

# Honeywell