



# MORNING PRIDE® EDGE TURNOUT GEAR

## Proven Performance and Reliability

Created for the firefighter who wants the latest technology, yet wishes to keep a traditional cut. Proven and versatile in many firefighting environments, Edge delivers the high level of performance you need to depend on.



# EDGE AT A GLANCE

## Flex-back Pleats

Allow better movement and reach

## Underarm Gussets in All Three Layers

- Maximize comfort
- Minimize coat rise

## Full-bellows Coat Pockets (9" x 9")

For ample capacity

## Side Adjustment Pull-tabs in Tough and Durable Nomex® Webbing

Waist adjustment of 4" to 6" provides a better, more tailored fit

## Full-bellows Pant Pocket (10" x 10")

For ample capacity

## Offset Seams Between Each Layer Reduce Abrasion

Seams on all three layers are offset to prevent abrasion and increase comfort

## AVAILABLE COAT AND PANT CLOSURE SYSTEMS

All paired with hook and loop:

- Zipper under flap
- Hooks and dees inside flap



## Stand-up Collar and Linkable Throat Tab

Allow fast donning

## Bar-tack Reinforced Stress Points

For maximum durability

## Ergonomically Curved Two-piece Arm Design

Follows the line of the arm for effortless movement

## Full-cut Body Design

For great all-around comfort

## Uninterrupted Zip-in Liner

- Eliminates gaps in thermal protection
- Prevents detachment of liner
- Is easily removed for washing or decontamination

## Button Suspenders

## Internal Adjustable Belt System

- Offers flexible adjustability without bulk
- Allows waist size to adjust up to 4"
- Does not interfere with an SCBA belt

## Uninterrupted Zip-in Liner

- Eliminates gaps in thermal protection
- Prevents detachment of liner
- Is easily removable for washing or decontamination

## Choice of Oversized Knee and Cuff Reinforcements

Customizable to your needs, for enhanced protection



**DuPont™ Nomex®** | **DuPont™ Kevlar®**

DuPont™ Nomex® and Kevlar® are trademarks or registered trademarks of E.I. du Pont de Nemours and Company.



# INNOVATIVE FEATURES



## Continuous Zip-in Liner Provides Uninterrupted Protection

Gaps between the outer shell and inner liner can leave a firefighter with only one layer of protection, exposing the wearer to an increased risk of thermal injury.

### ZIP-IN LINER FEATURES

- Eliminates gaps in thermal protection
- Prevents detachment of liner
- Easily removed for washing or decontamination
- Liner overlap design delivers enhanced comfort



## In-collar DRD™ Design Allows Easy Access Even with a Gloved Hand

Designed to aid in the rescue of an incapacitated or injured wearer, the Drag Rescue Device (DRD) is a critical safety component of any turnout jacket. EDGE offers the only in-collar DRD on the market. This proprietary design places the DRD access port in the collar instead of further down the back of the jacket, ensuring clear visibility and easy access – even when the downed firefighter wears a breathing apparatus.

### IN-COLLAR DRD FEATURES

- Reflective lettering for high visibility in low light conditions
- Flexible Kevlar® webbing for strength and comfort
- Unique, non-removable design prevents loss and improper installation
- Performance exceeds 2X NFPA 1971



## Articulating DRD Designed to Evenly Distribute the Weight

The Morning Pride® patented Articulating Drag Rescue Device is unlike any other DRD on the market.

The articulating nature of this design means that both underarms are engaged when the rescuer must pull from an angle. In contrast, non-articulating designs will only pull on both underarm areas if the rescuer can make a straight pull. Engaging both sides of the downed firefighter should help minimize the chance of pulling the coat off or failing to gain effective leverage on the individual.

DuPont™  
**Kevlar®**

*DuPont™ and Kevlar® are trademarks or registered trademarks of E.I. du Pont de Nemours and Company.*



100% Spun  
Nomex Knit

### TES™ (Thermal Enhancement System) Creates Extra Thermal Protection Without Adding Bulk

The TES™ (thermal enhancement system) design dramatically increases TPP (thermal protective performance) with no significant impact on THL (total heat loss). This means extra protection without added bulk.

TES™ consists of a layer of Nomex® mesh engineered into the garment design on the upper torso and arms –all areas typically exposed to compression and the highest thermal load.

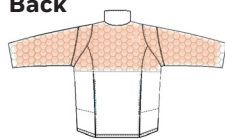
#### TES™ Advantages

- Superior protection of the entire upper torso and arms when compared to other thermal enhancement systems
- Increased thermal protection with no significant impact on THL

Front



Back



### Flex-back Pleats Allow Maximum Movement and Reach

Dynamic Flex-back Pleat was designed to allow the sleeve to expand freely in order to increase the reach and movement in the arms without adding fabric bulk. This construction is replicated in the thermal liner and moisture barrier, thus fully optimizing the Flex-Back design benefits.

In addition to the Dynamic Flex-Back Pleat, EDGE features underarm gussets in all three Layers, offering optimal comfort and minimum coat rise. A perfect fit!



### Dead Air Panels Provide Lightweight, Non-restrictive Insulation

Using X-9 engineered thermal padding, dead air panels, found only in Morning Pride® garments, increases conductive compressive heat resistance (CCHR) in critical areas significantly higher than the NFPA standard. No other system combines such results with a light-weight, highly vapor-permeable design, and the low cost found in Morning Pride® dead air panels.

**MORE THAN 2X THE NFPA  
MINIMUM PROTECTION  
REQUIREMENT**



### Hybrid Wristlet Increases Comfort and Dexterity of the Hand

The hybrid wristlet helps create additional comfort for the firefighter and will not get in the way of movement. This wristlet is attached to the waterwell that is then attached to the outer shell.

Thanks to this design, exclusive to Morning Pride® EDGE gear, you won't have to worry about contaminated water running down your sleeves from your waterwells when you raise your arms. You stay safe and dry!



### Dyna-Fit "Rig Friendly" Removeable Suspenders Hold Pants Securely

These patented suspenders have no mid-back hardware and comfortably stay in place because of an interplay of the suspender loops. They feature rig-friendly snap attachments (instead of buttons) preventing suspender rotation when the pants are being donned.



### Internal Adjustable Belt System Improves Comfort and Adjustability

What is the most inconvenient part of a belt on your turnout gear pants? For many, it's the buckle: it can be bulky, it doesn't offer the adjustability you're looking for and often enough it's uncomfortable when moving.

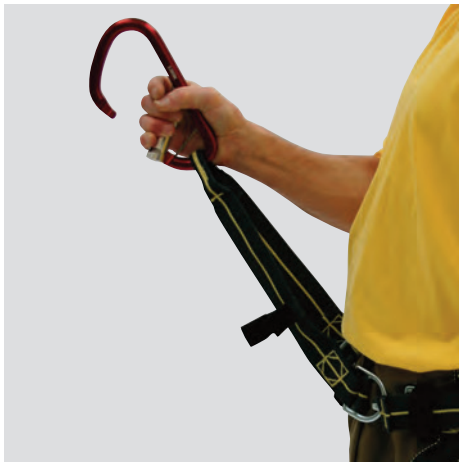
Morning Pride® EDGE offers a unique Internal Adjustable Belt System that integrates an elasticized belt in the back of the pants, between the thermal liner and the outer shell. The belt is secured with loops and allows you to adjust your waist size up to 4 inches. The best part...it's comfortable, expandable and removable. With the Internal Adjustable Belt System, you control the fit of your waist.

# HIGH-PERFORMANCE OPTIONAL FEATURES

Certified belts and harnesses:

UL classified to NFPA 1983, current edition

Components UL classified to NFPA 1971, current edition



*Shown with external leg loops*

*Shown with internal leg loops*

## **SPIDER™ HARNESS**

**Integrated Class II safety and rescue harness with A-frame**

- Built-in two-inch increments for even waist sizes 32-inch and above
- Compatible with internal or external leg loop configurations
- Integrated pant also accepts Patriot Harness and Life Grip Belt
- Extra stable A-frame stows on waist belt for bailout and ladder work
- Separate sliding D-ring on the A-frame for bailout system pre-connect

## **PATRIOT™ HARNESS**

**Integrated Class II safety and rescue harness**

- Built-in two-inch increments for even waist sizes 32-inch and above
- Compatible with internal or external leg loop configurations
- Integrated pant also accepts Spider Harness and Life Grip Belt
- Separate sliding D-ring for bailout system pre-connect
- Optional tether stows at waist for use with ladder hook

## **LIFE GRIP™ LADDER/ESCAPE BELT**

**Functional and fully adjustable escape belt**

- Built-in two-inch increments for all even-waist-size bunker pants
- The most economical yet fully featured ladder/escape belt
- Separate sliding D-ring for bailout system pre-connect
- Use with integrated pant adaptation or simple belt loops
- Optional tether stows at waist for use with ladder hook



# INTEGRATED HARNESS AND PANT SYSTEM

Parallel engineered for seamless compatibility. Constructed with 100% DuPont Kevlar® webbing and thread.

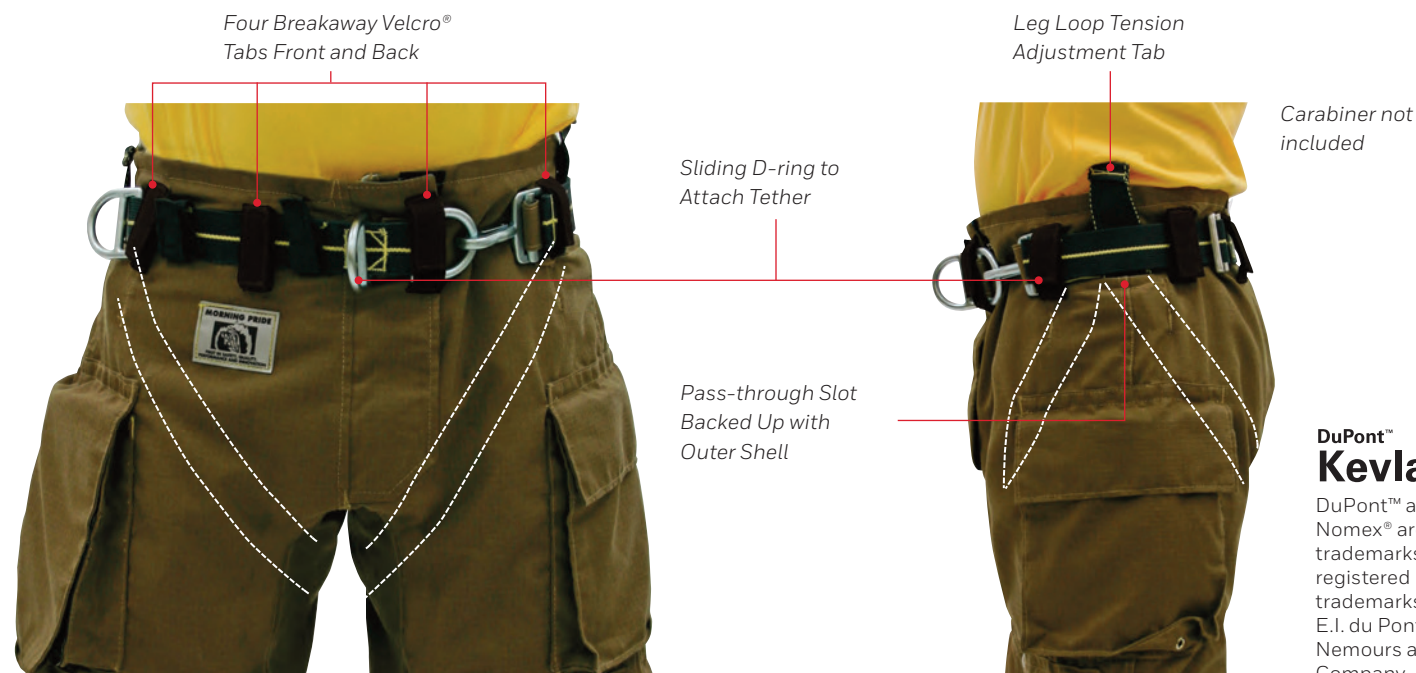
## PANT WITH EXTERNAL LOOPS

Easy to inspect, remove and install (Patriot Harness shown)



## PANT WITH INTERNAL LOOPS

Protected from UV and abrasion (Patriot Harness shown)



**DuPont™  
Kevlar®**

DuPont™ and Nomex® are trademarks or registered trademarks of E.I. du Pont de Nemours and Company.

# DESIGNED TO WORK IN UNISON

All leg loops, closures and A-frames are intuitively adjustable.  
All hardware is in hot-forged alloy steel for complete safety.



## Intuitive Leg Adjustments

- Just grab and pull to tighten
- Thumb the adjuster hardware to loosen (internal or external)

## Integrated Closure

- Simply zip and clip
- Harness closure and pant closure become one
- Donning and doffing are almost unaffected, requiring a short learning curve

## Built-in Spider™ Harness A-frame

- Optional ladder hook stows in A-frame when not in use
- Separate sliding D-ring for escape system pre-connect





### Heat-channel Knee

Enhanced thermal protection in the knee area is critical. The proprietary Heat channel Knee offers three to four times the NFPA minimum level requirement, providing you with maximized thermal and compressive protection, while the unique flexible design offers added comfort and mobility.



### BiFlex Heat-channel Knee

The BiFlex Heat-channel Knee utilizes additional lateral panels for even greater flexibility, maximizing comfort and protection with unparalleled conductive and compressive heat resistance (CCHR). It provides five layers of protection in the primary kneeling area and reduced layering for less centered areas.



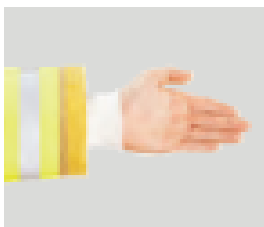
### 3D BiFlex Heat-channel Knee

With a combination of concave and convex seams, the 3D BiFlex Heat-channel Knee creates a three-dimensional shape that enhances mobility while making room for removable knee pads. This knee allows fire departments to provide varying levels of protection that are job specific. Waterproof knee pads are available in aramid and moisture barrier or 1/4" silicone foam padding (patent pending).

# OPTIONS COAT

All leg loops, closures and A-frames are intuitively adjustable.  
All hardware is in hot-forged alloy steel for complete safety.

## Wristlets

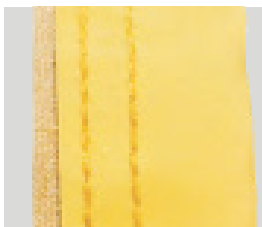


Nomex® knit 3¼" long  
with neoprene  
waterwell



Nomex® knit with  
6" thumb hole and  
neoprene waterwell

## Reinforcements



Sleeve cuffs,  
double stitched



Elbow patches 8" x 6"



Shoulder patches

## Pockets



Semi-bellows  
pocket 9" x 9"



Pocket reinforced  
with Kevlar® pouch



Hand warmer pocket  
9" x 9" full bellow

## Device Pockets & Accessories



Large radio pocket  
9" x 4½" x 2"  
with antenna port



Small radio pocket  
7½" x 3½" x 2"  
with antenna port



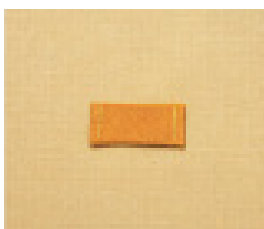
2- or 3-cell  
flashlight pocket



Inspection port  
on thermal liner of  
coat and pant



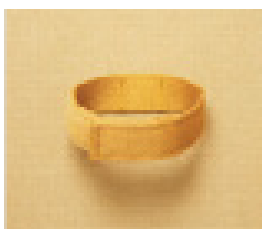
American or  
Canadian flag



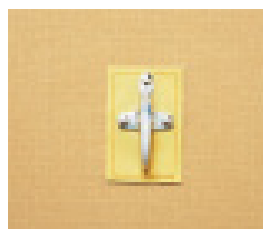
Microphone loop in  
webbing 1" x 2½"



Flashlight loop 2" x  
2" with utility strap  
in webbing 1" x 12"



Glove holder in  
webbing 1" x 12"



Accessory hook  
on Hypalon®  
patch 3" x 2"



Accessory dee  
on Hypalon®  
patch 3" x 2"

# OPTIONS PANT

## Suspenders



Removable suspenders, side quick-release buckle



Removable suspenders, New England style

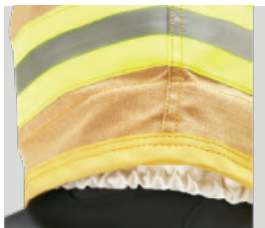


Add 2" 3M™ Scotchlite™ triple trim



Add advanced foam technology padding for suspenders

## Accessories



Waterdams



Knee patches



Reverse boot cut



Angled cuffs

## Thermal Enhancements



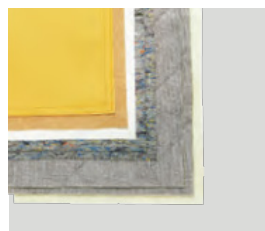
Thermal Enhancement System (TES)



Dead air panels



Yoke padding (7" high): extra thermal layer



Knee pads: extra thermal layers



I-Tech Insertable Knee System

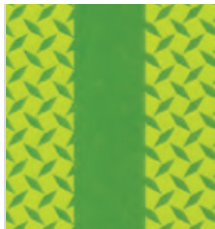
**DuPont™ Nomex®** | **DuPont™ Kevlar®**

DuPont™ Nomex® and Kevlar® are trademarks or registered trademarks of E.I. du Pont de Nemours and Company.



# OPTIONS TRIM AND LETTERING

## Trim Material



3" two-tone  
Reflexite®  
Brilliance



3" and 2"  
Reflexite®  
Brilliance



3" orange  
two-tone 3M™  
Scotchlite™



3" lime  
two-tone 3M™  
Scotchlite™

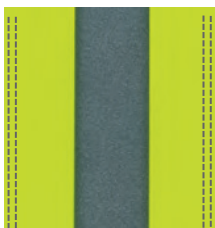


3" and 2" solid  
orange 3M™  
Scotchlite™



3" and 2"  
solid lime 3M™  
Scotchlite™

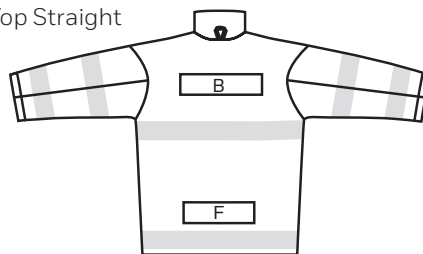
## Trim Stitching



Double stitch on  
reflective trim

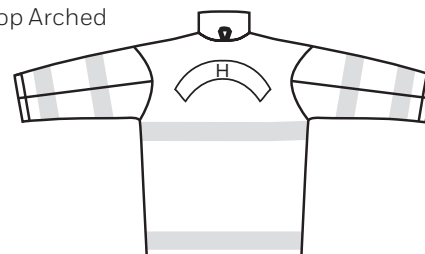
## Name Patch Common Positioning

Top Straight



Bottom Straight

Top Arched



## Name Patch Common Positioning



Permanent patches: 3 lengths

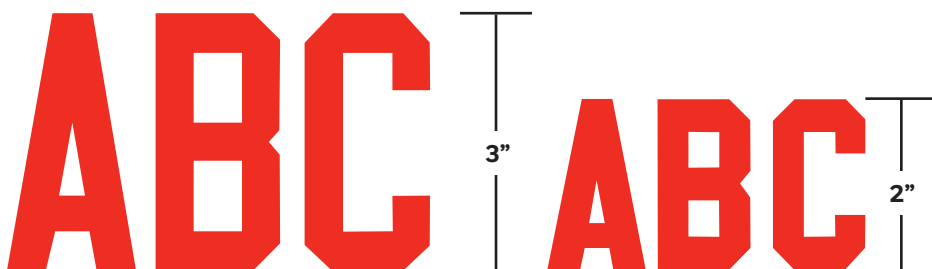


Removable patches: 2 lengths



Hanging name patch 4" x 19"

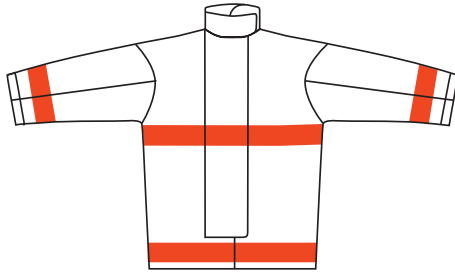
## Lettering



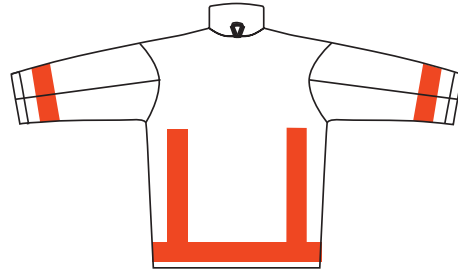
2" or 3" sewn-on 3M™ Scotchlite™ solid orange, lime, or silver.  
2" or 3" heat-set 3M™ Scotchlite™ solid orange or lime. 2" or 3"  
sewn-on Reflexite® solid lime and orange or Reflexite® Brilliance.

## Trim Configurations

### Standard – 2" or 3"



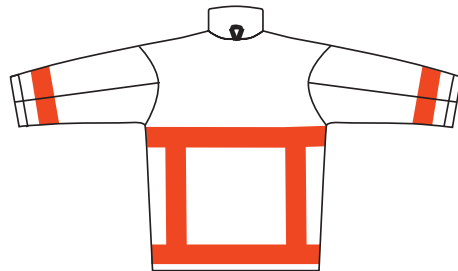
NFPA Standard – Front



NFPA Hi-viz – Back



NFPA Standard – Back



NFPA Combo – Back

### New York – 2" or 3"



New York Standard – Front



New York Hi-viz – Back



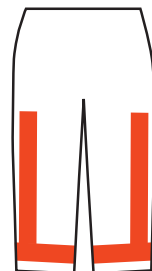
New York Standard – Back



New York Combo – Back



Standard



Hi-viz – Back

## Exclusive Corporate Sponsor



Honeywell is proud to be the exclusive corporate sponsor of the United States Fire Administration/National Fallen Firefighters Foundation's National Fire Service Vulnerability Assessment Project.

## Proudly Supporting



IAFC  
International Association of Fire Chiefs



The IAFF  
Fire Fighters Burn Foundation



Firefighter Cancer Support Network



International Association of Black Professional Fire Fighters



International Association of Women in Fire & Emergency Services



NFFF  
National Fallen Firefighters Foundation



NVFC  
National Volunteer Fire Council



FDSOA Fire Department Safety Officers Association



Congressional Fire Services Institute



ISFSI  
International Society of Fire Service Instructors



NFPA  
National Fire Protection Association



FEMSA Fire Equipment Manufacturers & Suppliers Association

## For more information

[www.honeywellfirstresponder.com](http://www.honeywellfirstresponder.com)

## For Information on Innovation and Patents

[hsmrats.com](http://hsmrats.com)

## Honeywell First Responder

#1 Innovation Court  
Dayton, Ohio 45414  
Tel.: 800-688-6148

[www.honeywell.com](http://www.honeywell.com)

4049020 | Morning Pride® EDGE Turnout Gear | 02/25  
© 2025 Honeywell International Inc.

