

# PIONEERING COMFORT AND DURABILITY SINCE 1965



**KING'S**

by Honeywell

*The  
Logical Choice*



**King's Safety Footwear: Tough Outside, Soft Inside.**

A Legacy of Safety Footwear Excellence, Delivering a Heritage of Innovation, Ultra Comfort and Durable Performance.

# ELEVATING FOOTWEAR EXCELLENCE SINCE 1965

For over 55 years, King's has been manufacturing comfortable safety footwear with superior performance quality for rugged, industrial environments, providing protection against a variety of work hazards. Engineered to withstand tough conditions with a durable exterior and designed with a soft interior for lasting comfort throughout the workday, King's has redefined the standards for footwear innovation.

## FOOTWEAR FEATURES

### Sole Features



Puncture Resistant

Pierce-resistant steel midsole reduces the risk of sharp objects penetrating the sole and entering the foot.



Anti-Static

Anti-static soles control the build-up of static electricity on its wearer to reduce the potential hazards associated with static discharge.



ESD

ESD (Electrostatic Discharge) certified footwear provides the necessary grounding to control static. ESD footwear is engineered to prevent sudden static flows between electrically charged objects caused by contact, and thus protect against potential ESD hazards.



Slip Resistant

A slip-resistant sole design ensures superior traction and heightened stability. For additional slip resistance (SR) testing under EN ISO 20345:2022, a ceramic tile is treated with a lubricant of glycerine.



Self-Cleaning Sole

Improved technical outsole optimises fluid evacuation and provides greater bending flexibility.



Mineral Oils Resistant

Enhanced protection to resist contact with acidity and other corrosive mineral substances.



Organic Oils & Fats Resistant

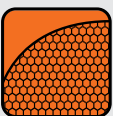
Enhanced protection to resist contact with natural oils and fats.

### Comfort Features



Wide Profile Toecap

King's signature wide profile safety toecap offers maximum comfort for your toes.



Breathable Lining

Highly breathable 3-D lining minimises abrasion when in contact with skin, allowing your feet to remain insulated while drawing excess moisture from the foot.



Comfort Footbed

Enhanced footbed for greater comfort and heel support, with highly breathable perforated channels that dry faster and promote foot freshness.



Impact Absorption

Ergonomic cushioning design to provide ultimate comfort that greatly reduces foot, leg and back fatigue when walking on hard surfaces.



Lightweight

Superior lightweight design to provide enhanced comfort for long hours of wear.

### Toecap Feature



Steel or Composite Safety Toecap

Offers protection against falling objects or compression. Developed to withstand an impact of 200 joules.

### Special Features



2.0-2.2mm Full Grain Leather

Tough 2.0 - 2.2 mm thick full-grain leather upper with good breathability.



Water Resistant Leather

Helps keep feet dry as it repels water on the surface of footwear.



Wear-off Indicator

Wear-off indicator provides an early warning on sole wear and its potential loss of grip to gauge for a replacement.



Toe Bumper

Protects the toe of footwear from scuffing and marking when scraped along rough surfaces.



Heel Guard

Offers stability and impact protection in demanding environments.



Non-Metallic Perforation-Resistant Insert

Reduces the risk of sharp objects penetrating the sole and into the foot.



Driver Centric Stabiliser

Unique stabiliser supports drivers' foot positioning, ensuring an optimised stance that promotes optimal comfort and stability.



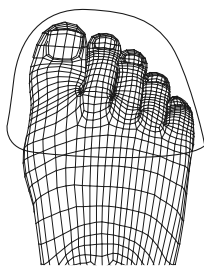


## KING'S 5-TOE TECHNOLOGY

The King's wide profile toecap provides extra comfort for your forefoot and toes, while providing ample room for movement. This, in turn, allows your toes to splay easily, offering a heightened sense of balance and greater stability.



King's Wide Profile Toecap



Conventional Toecap

## INSOLE TECHNOLOGY

The King's Comfort Footbed features superior shock absorption technology, offering enhanced cushioning for greater foot comfort and maximum heel support.

Perforated channels on the sole promote better breathability, enabling the sole to dry quickly and maintaining foot freshness throughout the day.







## A CLOSER LOOK AT EN ISO 20345:2022

SR (EN ISO 20345:2022)



The introduction of the EN ISO 20345:2022 standard in 2022 marked an advancement in safety footwear standards. Replacing the EN ISO 20345:2011, this new framework not only modified existing criteria, but also introduced fresh requirements, setting a higher benchmark for safety footwear.

One notable improvement lies in slip resistance evaluation. Slip resistance assessment is now mandatory in EN ISO 20345:2022, with the SRA, SRB and SRC marks being abolished. The basic slip resistance test mirrors the previous SRA test, which was conducted on a ceramic tile coated with soap solution.

An additional and more stringent test, denoted by “SR” on the certificate, may be conducted, involving the application of a lubricant of glycerine on a ceramic tile. While this test is optional, it is a prerequisite for obtaining the SR marking. This modification streamlines the certification process by integrating slip resistance as a core criterion and with a higher passing criteria.

Conforming to EN ISO 20345:2022 standards, the King’s KWD Range and KWX Range meet the basic slip resistance requirements and demonstrate compliance with the additional, more stringent SR testing.

# KING'S KWD RANGE

## SOLE TECHNOLOGY

SR (EN ISO 20345:2022)



SR compliance for improved slip resistance with EN ISO 20345:2022



Outsole design engineered to complement the natural biomechanics of the walking gait



Tread with deeper grip patterns and enhanced grip variations offers superior traction



Wear-off indicators provide an early warning on sole wear and potential loss of grip



Enhanced outsole surface maximizes ground contact to optimize stability

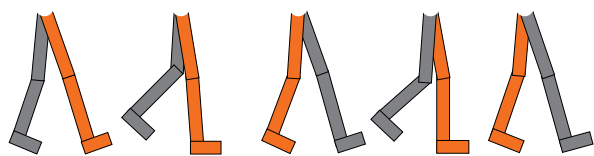


# KING'S KWD RANGE

## SOLE TECHNOLOGY



Embrace enhanced stability and fatigue-free strides with King's expertly designed outsoles that align seamlessly with natural walking biomechanics.



1  
Contact

2  
Stability

3  
Propulsion



### 1 CONTACT

Contact of the heel  
with the ground



### 2 STABILITY

Transferral of body  
weight forward



### 3 PROPULSION

Impulse to the  
next step

From the controlled initial contact with the ground, supporting the crucial midstance phase of walking to promote stability, and progressing to provide the necessary propulsion for a confident push-off to the next step, the KWD Range is designed to support fatigue-free strides.

# KING'S KWD RANGE

## SHOCK ABSORPTION TECHNOLOGY



Explore the ultimate in support for diverse foot arch profiles with King's Stability Torsion Zone, helping to prevent feet pronation and supination, ensuring optimal stability and comfort.



The King's KWD Range has been engineered with exceptional shock absorption technology to provide enhanced comfort and help reduce feet fatigue even during the most demanding tasks. Discover the difference in comfort with specialised air cushioning that cradles your feet. Enhanced outsole thickness delivers exceptional cushioning, making every step a breeze.





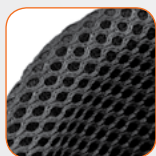
# KING'S KWD RANGE

## DUAL DENSITY POLYURETHANE FOOTWEAR

SR (EN ISO 20345:2022)



Padded ankle collar



Highly breathable 3-D lining



Improved visibility in low-light environments with orange hued shoelaces



Higher gusseted tongue minimises water and debris penetration into the shoes



Reflective strip increases visibility in low-light environments

Reinforced stitching



Specialised air cushioning for exceptional shock absorption



King's Comfort Footbed enhances natural airflow

Stability Torsion Zone supports diverse foot arch profiles

Non-woven vamp lining

Tough yet breathable 2.0 – 2.2mm full-grain leather upper

Steel toe cap conforming to EN ISO 20345:2022



Enhanced toe bumper for added shoe front protection

Strong leather upper and sole bond



Enhanced outsole thickness for exceptional cushioning and comfort



2.0-2.2mm Full Grain Leather



Puncture Resistant



Anti-Static



Slip Resistant



Mineral Oils & Fats Resistant



Organic Oils & Fats Resistant



Steel Safety Toecap



Wide Profile Toecap



Breathable Lining



Comfort Footbed



Impact Absorption



Lightweight



Wear-off Indicator



Toe Bumper



Strong Bonding



# KING'S KWD RANGE

## KWS200

### Low-cut Lace Safety Shoe

Size  
UK 3-13 | US 4-14 |  
EU 36-48

Colour:  
**Black**



- Higher gusseted tongue minimises water and debris penetration into the shoes.
- Padded ankle collar provides superior ankle comfort, support, and chafing prevention.
- Recommended for: Construction, Mining, Manufacturing, General Industries, Utilities, Transportation, Logistics.
- Available without steel midsole in style KWS200X.

## KWD207

### Slip-on Safety Shoe

Size  
UK 3-13 | US 4-14 |  
EU 36-48

Colour:  
**Black**



- Low-cut slip-on and elastic gussets for easy donning and doffing.
- Padded ankle collar provides superior ankle comfort, support, and chafing prevention..
- Recommended for: Mining, Manufacturing, General Industries, Utilities, Transportation, Logistics.
- Available without steel midsole in style KWD207X.

## KWD301

### Mid-cut Lace Safety Boot

Size  
UK 3-13 | US 4-14 |  
EU 36-48

Colour:  
**Black** **Brown**



- Higher gusseted tongue minimises water and debris penetration into the shoes
- Padded ankle collar provides superior ankle comfort, support, and chafing prevention.
- Recommended for: Construction, Mining, Manufacturing, Light Industries, Utilities, Transportation, Logistics.
- Available without steel midsole in style KWD301X (Black) and KWD301KX (Brown).

## KWD106

### Chelsea Safety Boot

Size  
UK 3-13 | US 4-14 |  
EU 36-48

Colour:  
**Black**



- Elastic-sided boot with back pull-up strap for easy donning and doffing.
- Padded ankle collar provides superior ankle comfort, support, and chafing prevention.
- Recommended for: Mining, Manufacturing, General Industries, Utilities, Transportation, Logistics.
- Available without steel midsole in style KWD106X.

## KWD206

### Zipper Safety Boot

Size  
UK 3-13 | US 4-14 |  
EU 36-48

Colour:  
**Black**



- Convenient, quick release side zip for easy donning and doffing.
- Padded ankle collar provides superior ankle comfort, support, and chafing prevention.
- Recommended for: Construction, Mining, Manufacturing, Heavy and General Industries, Utilities, Oil and Gas.
- Available without steel midsole in style KWD206X.

## KWD205

### Rigger Safety Boot

Size  
UK 3-13 | US 4-14 |  
EU 36-48

Colour:  
**Black** **Brown**



- Side pull-up straps for easy donning and doffing even when wearing gloves.
- Recommended for: Construction, Mining, Manufacturing, Heavy and Light Industries, Utilities, Oil and Gas.
- Available without steel midsole in style KWD205X (Black) and KWD205CX (Brown).

# MODELS AND SPECIFICATIONS

LOW-CUT LACE SAFETY SHOE					
MODEL #	STEEL MIDSOLE	CATEGORY	STANDARD	COLOR	SOLE
KWS200	Yes	S1P	SR (EN ISO 20345:2022)	Black	Dual Density PU
KWS200X	No	S1	SR (EN ISO 20345:2022)	Black	Dual Density PU
SLIP-ON SAFETY SHOE					
MODEL #	STEEL MIDSOLE	CATEGORY	STANDARD	COLOR	SOLE
KWD207	Yes	S1P	SR (EN ISO 20345:2022)	Black	Dual Density PU
KWD207X	No	S1	SR (EN ISO 20345:2022)	Black	Dual Density PU
MID-CUT LACE SAFETY SHOE					
MODEL #	STEEL MIDSOLE	CATEGORY	STANDARD	COLOR	SOLE
KWD301	Yes	S1P	SR (EN ISO 20345:2022)	Black	Dual Density PU
KWD301X	No	S1	SR (EN ISO 20345:2022)	Black	Dual Density PU
KWD301K	Yes	S1P	SR (EN ISO 20345:2022)	Brown	Dual Density PU
KWD301KX	No	S1	SR (EN ISO 20345:2022)	Brown	Dual Density PU
ELASTIC SIDED SAFETY BOOT					
MODEL #	STEEL MIDSOLE	CATEGORY	STANDARD	COLOR	SOLE
KWD106	Yes	S1P	SR (EN ISO 20345:2022)	Black	Dual Density PU
KWD106X	No	S1	SR (EN ISO 20345:2022)	Black	Dual Density PU
ZIPPER SAFETY BOOT					
MODEL #	STEEL MIDSOLE	CATEGORY	STANDARD	COLOR	SOLE
KWD206	Yes	S1P	SR (EN ISO 20345:2022)	Black	Dual Density PU
KWD206X	No	S1	SR (EN ISO 20345:2022)	Black	Dual Density PU
RIGGER SAFETY BOOT					
MODEL #	STEEL MIDSOLE	CATEGORY	STANDARD	COLOR	SOLE
KWD205	Yes	S1P	SR (EN ISO 20345:2022)	Black	Dual Density PU
KWD205X	No	S1	SR (EN ISO 20345:2022)	Black	Dual Density PU
KWD205C	Yes	S1P	SR (EN ISO 20345:2022)	Brown	Dual Density PU
KWD205CX	No	S1	SR (EN ISO 20345:2022)	Brown	Dual Density PU



# KING'S KWX RANGE

## SOLE TECHNOLOGY

SR (EN ISO 20345:2022)



SR compliance for improved slip resistance with EN ISO 20345:2022



Deeper, more aggressive grooves for greater grip on slippery surfaces and prolonged slip resistance



Grip Zone offers enhanced grip and slip resistance on rugged terrains



Innovative outsole cleaning system with unique groove design helps expel dirt and mud that gather within the sole channels, ensuring your footwear maintains its optimal grip and performance even in demanding work environments





## DRIVER-CENTRIC STABILISER



King's innovative driver-centric stabiliser meticulously engineered into the outsole of the KWX Range is designed to prioritize comfort and control for vehicle operators. The unique curvature of the stabiliser supports foot positioning, ensuring an optimised stance that promotes heightened comfort and stability. As drivers operate their vehicles, the driver-centric stabiliser effortlessly conforms to the natural position of the foot on the pedal.



# KING'S KWX RANGE

## DUAL DENSITY POLYURETHANE FOOTWEAR

SR (EN ISO 20345:2022)



Padded ankle collar



Highly breathable  
3-D lining



Improved visibility  
in low-light  
environments  
with orange hued  
shoelaces



Higher gusseted tongue  
minimises water and  
debris penetration into  
the shoes

Reinforced  
stitching

Non-woven vamp lining

S3 rated, water-resistant  
full-grain leather upper;  
tough yet breathable

Steel toe cap conforming to  
EN ISO 20345:2022



Driver-centric stabiliser ensures  
optimised foot positioning for  
heightened comfort and control  
while driving

King's Comfort Footbed  
enhances natural airflow

Enhanced outsole thickness  
for exceptional cushioning  
and comfort

Strong leather upper  
and sole bond



Water  
Resistant  
Leather



2.0-2.2mm  
Full Grain  
Leather



Puncture  
Resistant



Anti-Static



Slip  
Resistant



Self-  
Cleaning  
Sole



Mineral  
Oils  
Resistant



Organic  
Oils & Fats  
Resistant



Steel  
Safety  
Toecap



Wide  
Profile  
Toecap



Breathable  
Lining



Comfort  
Footbed



Impact  
Absorption



Lightweight



Toe  
Bumper



Strong  
Bonding



Driver  
Centric  
Stabilizer

# KING'S KWX RANGE

## KWX301

### Mid-cut Lace Safety Boot

Size  
UK 3-13 | US 4-14 |  
EU 36-48

Colour:

**Black** **Brown**



- Higher gusseted tongue minimises water and debris penetration into the shoes
- Padded ankle collar provides superior ankle comfort, support, and chafing prevention.
- Recommended for: Infrastructure, Mining, Heavy Industries, Oil and Gas.
- Available without steel midsole in style KWX301X (Black) and KWX301KX (Brown).

## KWX205

### Rigger Safety Boot

Size  
UK 3-13 | US 4-14 |  
EU 36-48

Colour:

**Black** **Brown**



- Side pull-up straps for easy donning and doffing even when wearing gloves.
- Recommended for: Infrastructure, Mining, Heavy Industries, Oil and Gas.
- Available without steel midsole in style KWX205X (Black) and KWX205CX (Brown).

# MODELS AND SPECIFICATIONS

## MID-CUT LACE SAFETY BOOT

MODEL #	STEEL MIDSOLE	CATEGORY	STANDARD	COLOR	SOLE
KWX301	Yes	S3	SR (EN ISO 20345:2022)	<b>Black</b>	Dual Density PU
KWX301X	No	S2	SR (EN ISO 20345:2022)	<b>Black</b>	Dual Density PU
KWX301K	Yes	S3	SR (EN ISO 20345:2022)	<b>Brown</b>	Dual Density PU
KWX301KX	No	S2	SR (EN ISO 20345:2022)	<b>Brown</b>	Dual Density PU

## RIGGER SAFETY BOOT

MODEL #	STEEL MIDSOLE	CATEGORY	STANDARD	COLOR	SOLE
KWX205	Yes	S3	SR (EN ISO 20345:2022)	<b>Black</b>	Dual Density PU
KWX205X	No	S2	SR (EN ISO 20345:2022)	<b>Black</b>	Dual Density PU
KWX205K	Yes	S3	SR (EN ISO 20345:2022)	<b>Brown</b>	Dual Density PU
KWX205KX	No	S2	SR (EN ISO 20345:2022)	<b>Brown</b>	Dual Density PU



# KING'S EUORANGE™

## SOLE TECHNOLOGY



Cleated sole design enhances grip for better stability on every step.



Large cleats for optimized fluid evacuation provides stronger grip and superior bending flexibility.



Marked heel offers better grip for enhanced stability, especially when walking up the stairs and climbing ladders.



Three wear-off indicators added to the sole provides an early warning on sole wear and potential loss of grip.

# KING'S EUORANGE™

## SINGLE / DUAL DENSITY POLYURETHANE FOOTWEAR



ESD compliant to  
EN 61340-4-3:2018  
(KWD202B, KWD302B)



Puncture  
Resistant



Anti-Static



Slip  
Resistant



Self-  
Cleaning  
Sole



Mineral  
Oils  
Resistant



Organic  
Oils & Fats  
Resistant



Steel or  
Composite  
Safety  
Toecap



Wide  
Profile  
Toecap



Breathable  
Lining



Comfort  
Footbed



Impact  
Absorption



Lightweight



Wear-off  
Indicator



Toe  
Bumper



Heel  
Guard



# KING'S EURORANGE™

## KWD250B

### Half-mid-cut Lace Safety Boot

S3

Size  
UK 3-13 | US 4-14 |  
EU 36-48

Colour:  
**Black**



- Water resistant leather half-mid-cut lace-up safety boot.
- Wide profile steel toecap for greater comfort.
- Padded ankle collar for comfort and support, and to prevent chafing.
- Dual density polyurethane (PU) sole.
- Highly breathable 3-D lining reduces skin abrasion and draws moisture from the foot.
- Recommended for: Manufacturing, General Industries, Utilities.

## 15580-BLK

### Elastic Sided Safety Boot

S1

Size  
UK 3-13 | US 4-14 |  
EU 36-48

Colour:  
**Black**



- Leather safety boot, elastic sided.
- Wide profile steel toecap for greater comfort.
- Dual density polyurethane (PU) sole.
- Highly breathable 3-D lining reduces skin abrasion and draws moisture from the foot.
- Recommended for: Manufacturing, General Industries, Utilities.

## 15534Z-BLK

### Mid-cut Lace Safety Boot

S1

Size  
UK 3-13 | US 4-14 |  
EU 36-48

Colour:  
**Black**



- Leather safety boot mid-cut lace-up with side-zip
- Wide profile steel toecap for greater comfort.
- Padded ankle collar for comfort and support, and to prevent chafing.
- Dual density polyurethane (PU) sole.
- Highly breathable 3-D lining reduces skin abrasion and draws moisture from the foot.
- Half sizes: From 6.5 (40) to 9.5 (44).
- Recommended for: Manufacturing, General Industries, Utilities.

## KWD202B

### Low-cut Lace Safety Shoe

S3



Size  
UK 3-13 | US 4-14 |  
EU 36-48

Colour:  
**Black**



- Water resistant leather low-cut lace-up metal free safety shoe.
- Wide profile composite toecap for greater comfort.
- Padded ankle collar for comfort and support, and to prevent chafing.
- Dual density polyurethane (PU) sole.
- Non-metal puncture resistant material.
- ESD compliant to EN 61340-4-3:2018
- Recommended for: Manufacturing, General Industries, Utilities.

## 15532Z-WHT

### Mid-cut Lace Safety Boot

S1

Size  
UK 3-13 | US 4-14 |  
EU 36-48

Colour:  
**Wheat**



- Leather safety boot mid-cut lace-up with side-zip.
- Wide profile steel toecap for greater comfort.
- Padded ankle collar for comfort and support, and to prevent chafing.
- Dual density polyurethane (PU) sole.
- Highly breathable 3-D lining reduces skin abrasion and draws moisture from the foot.
- Recommended for: Manufacturing, General Industries, Utilities.

## KWD302B

### Mid-cut Lace Safety Boot

S3



Size  
UK 3-13 | US 4-14 |  
EU 36-48

Colour:  
**Black**



- Water resistant leather mid-cut lace-up metal free safety boot.
- Wide profile composite toecap for greater comfort.
- Padded ankle collar for comfort and support, and to prevent chafing.
- Dual density polyurethane (PU) sole.
- Non-metal puncture resistant material.
- ESD compliant to EN 61340-4-3:2018
- Recommended for: Manufacturing, General Industries, Utilities.

# KING'S EURORANGE™

## KWS201S-S1P

S1P

### Leather Sandal

Size  
UK 3-13 | US 4-14 |  
EU 36-48

Colour:  
**Black**



- Leather sandal.
- Wide profile steel toecap for greater comfort.
- Padded ankle collar for comfort and support, and to prevent chafing.
- Single density polyurethane (PU) sole.
- Recommended for: Manufacturing, General Industries, Utilities.

## KWD200B-S3

S3

### Low-cut Lace Safety Shoe

Size  
UK 3-13 | US 4-14 |  
EU 36-48

Colour:  
**Black**



- Water resistant leather low-cut lace-up safety shoe.
- Wide profile steel toecap for greater comfort.
- Padded ankle collar for comfort and support, and to prevent chafing.
- Dual density polyurethane (PU) sole.
- Recommended for: Manufacturing, General Industries, Utilities.

## KWS201B-S1

S1

### Low-cut Lace Safety Shoe

Size  
UK 3-13 | US 4-14 |  
EU 36-48

Colour:  
**Black**



- Perforated leather low-cut lace-up safety shoe.
- Wide profile steel toecap for greater comfort.
- Padded ankle collar for comfort and support, and to prevent chafing.
- Single density polyurethane (PU) sole.
- Recommended for: Manufacturing, General Industries, Utilities.

## KWD301B-S3

S3

### Mid-cut Lace Safety Shoe

Size  
UK 3-13 | US 4-14 |  
EU 36-48

Colour:  
**Black**



- Water resistant leather mid-cut lace-up safety boot.
- Wide profile steel toecap for greater comfort.
- Padded ankle collar for comfort and support, and to prevent chafing.
- Dual density polyurethane (PU) sole.
- Recommended for: Manufacturing, General Industries, Utilities.

## KWS201G-S1P

S1P

### Low-cut Lace Safety Shoe

Size  
UK 3-13 | US 4-14 |  
EU 36-48

Colour:  
**Gray**



- Perforated leather low-cut lace-up safety shoe.
- Wide profile steel toecap for greater comfort.
- Padded ankle collar for comfort and support, and to prevent chafing.
- Single density polyurethane (PU) sole.
- Recommended for: Manufacturing, General Industries, Utilities.



# MODELS AND SPECIFICATIONS

## SANDALS AND PERFORATED SHOE

MODEL #	SKU	STEEL MIDSOLE	CATEGORY	STANDARD	COLOR	SOLE
KWS201S	6250131	Yes	S1P	EN ISO 20345:2011	Black	Single Density
KWS201B	6250132	No	S1	EN ISO 20345:2011	Black	Single Density
KWS201G	6250133	Yes	S1P	EN ISO 20345:2011	Gray	Single Density

## LOW-CUT LACE SAFETY SHOE

MODEL #	SKU	STEEL MIDSOLE	CATEGORY	STANDARD	COLOR	SOLE
KWD202B	6250137	Yes (Non-metallic)	S3	EN ISO 20345:2011	Black	Dual Density PU
KWD200B	6250134	Yes	S3	EN ISO 20345:2011	Black	Dual Density PU

## HALF-MID-CUT LACE SAFETY BOOT

KWD250B	6250136	Yes	S3	EN ISO 20345:2011	Black	Dual Density PU
---------	---------	-----	----	-------------------	-------	-----------------

## MID-CUT LACE SAFETY BOOT

MODEL #	SKU	STEEL MIDSOLE	CATEGORY	STANDARD	COLOR	SOLE
KWD301B	6250135	Yes	S1P	EN ISO 20345:2011	Black	Dual Density PU
KWD302B	6250138	Yes (Non-metallic)	S1P	EN ISO 20345:2011	Black	Dual Density PU
15534Z-BLK	15534Z-BLK	No	S1	EN ISO 20345:2011	Black	Dual Density
15532Z-WHT	15532Z-WHT	No	S1	EN ISO 20345:2011	Wheat	Dual Density

## ELASTIC-SIDED SAFETY BOOT

MODEL #	SKU	STEEL MIDSOLE	CATEGORY	STANDARD	COLOR	SOLE
15580-BLK	15580-BLK	No	S1	EN ISO 20345:2011	Black	Dual Density



### Tips to take care your shoes

- Wash insole regularly to keep feet clean and healthy.
- Dry and remove excess dirt with an old toothbrush regularly to maintain fluid evacuation and slip resistance properties.
- Remove any marks using a damp cloth and soap if necessary. Polish any grain or pigmented leathers using a commercially available shoe care product.
- Store shoes in a dry, well-ventilated area after use. Keep in an area that is not subject to rapid changes in temperature and humidity levels.
- Do not soak shoes in water, machine wash, dry clean or bleach.



**KING'S**

by Honeywell

*The Logical Choice*

LEARN MORE



automation.honeywell.com



**King's by Honeywell**

Honeywell Safety & Productivity Solutions  
Level 25, UOA Corporate Tower Lobby B  
Avenue 10, The Vertical  
59200 Bangsar South City  
Kuala Lumpur, Malaysia



Malaysia : +603 2777 3948/ 3950  
Singapore : +65 6714 6800  
Indonesia : +62 21 2964 0328  
Philippines : +632 730 7300  
Thailand : +662 290 7000  
Vietnam : +84 24 3946 1348

King's Footwear Catalogue | 11/24  
©2024 Honeywell International Inc.

