

HONEYWELL SAFETY SUITE

Comprehensive Software Solution

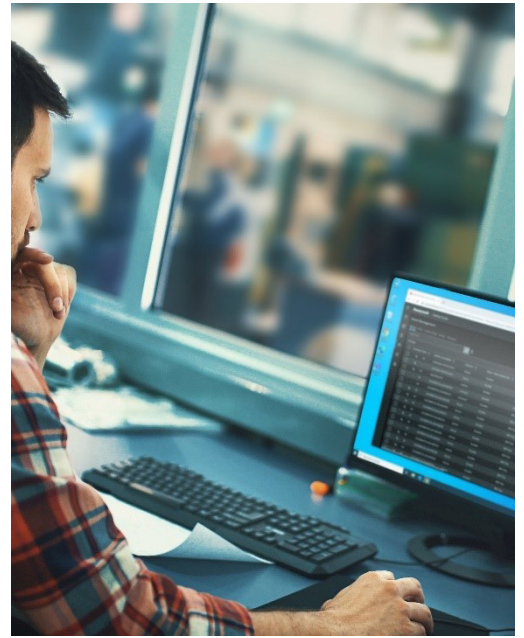
Honeywell Safety Suite is a comprehensive software solution designed to improve safety, increase productivity and simplify compliance management.

ENHANCED SAFETY: ASSET & WORKER PROTECTION

Honeywell Safety Suite is a software solution designed to help businesses manage assets, enhance safety and drive productivity. This end-to-end solution enables you to manage your fleet of portable gas detectors and docks with ease. The integrated ecosystem of safety applications uses connected devices, analytics and workflow automation to provide unified visibility, data and device management capabilities to help keep your workers safe in the most challenging conditions.

PROTECT YOUR WORKFORCE FROM EVERY ANGLE

Safety Suite offers a comprehensive solution for workplace safety management. By integrating data from a network of wireless monitors, it provides a centralized, real-time overview of safety conditions. Acting as a pivotal command center, Safety Suite delivers complete visibility into device statuses, alarm activations, and sensor readings, ensuring a holistic approach to safeguarding your workforce.



FEATURES AND BENEFITS



REAL-TIME DETECTION

Safety Suite Premium allows you to remotely monitor the safety of your workers with real-time location information, detailed exposure detection and geofence alerts.



COMPLIANCE MANAGEMENT

Manage a fleet of detectors with simplified access to data that showcases each device's compliance status and timing of upcoming calibrations and bump tests.



MANAGE TASKS EFFICIENTLY

Efficiently execute daily tasks with automated maintenance tasks such as scheduled email reports, gas-detector firmware updates and data downloads.



MANAGE DEVICES WITH EASE

Access consolidated data in easy-to-understand dashboards and effortlessly create useful reports for multi-site management.



DEPLOYMENT FLEXIBILITY

Safety Suite is available in an on-cloud or on-premise version, with the scalability and performance required for safety-critical operations.



INTUITIVE INTERFACE

Safety Suite offers consistent, clear and concise user interactions that require minimal training and time.

Honeywell

Honeywell Safety Suite Software Solution

Safety Suite is offered in two deployment solutions tailored to meet specific customer needs: Safety Suite Plant and Safety Suite Responder. Both offerings are part of Honeywell's commitment to ensuring worker safety through innovative, real-time solutions that integrate seamlessly into operations, whether in industrial settings or emergency response scenarios.



SAFETY SUITE PLANT – PREMIUM/DELUXE/LITE/BASIC

Honeywell Safety Suite Plant is a gas detection fleet management and real-time monitoring solution providing configurable feature sets specifically designed for flexible deployments to manage the safety of workers at industrial facilities or in remote locations working in potentially hazardous environments. This offering is designed for industrial applications such as oil and gas facilities and wastewater treatment plants and utilities sites.

- Fully customizable for maximum flexibility to meet each customer's unique requirements
- Geo-fence alerting for managing critical area-specific monitoring
- Private/public wireless infrastructure for maximizing connectivity coverage
- Allows multiple sites to be managed within a single system
- Available installed as cloud or on-premise offering to provide flexible deployment options



SAFETY SUITE RESPONDER – PREMIUM/DELUXE/LITE/BASIC

Safety Suite Responder is a purpose-built solution specifically designed for fast deployments to manage the safety of emergency response teams working in hazardous environments. Safety Suite Responder is often used by first responder teams such as Local Fire, National Defense, EPA Monitoring and Hazmat teams.

- Easy-to-use interface with critical information at your fingertips
- Designed for quicker set-up and tear-down
- Private wireless infrastructure critical for maintaining connectivity
- Allows multiple response teams to collaborate (Mutual-Aid)
- Integrates with ChemResponder and VIPER, collaboration tools used by government agencies

Honeywell Safety Suite Software Solution

PREMIUM PACKAGE

Safety Suite Premium is a comprehensive solution for viewing your device's status in real time with ease and efficiency. The real time monitoring features allow you to view your worker's locations and instrument readings in real time, as well as access historical data and advanced features such as incident playback and plume modeling. With the premium package, you get all of the features of the deluxe package plus the real time features enhance your situational awareness and safety procedures.

- Provides a centralized system that offers real-time instrument readings, map-view for person's location and, on-screen alarms and alerts
- Enables live event notifications and geo-fence notifications, allowing for rapid response and communication
- Offers detailed exposure detection and advanced plume modeling, which is crucial for emergency response

LITE PACKAGE

Focused on servicing instrument fleets where the customer does not require access to instrument data.

- Device configuration will include setting of various instrument features and sensor alarm thresholds
- Provides bump and calibration certifications and essential firmware updates

DELUXE PACKAGE

Safety Suite Deluxe is a convenient solution for centralizing your data management and reporting needs. The app allows you to configure, update firmware, and run calibrations and bump tests for the paired devices. In addition, you can view instrument readings, access device data, generate reports and email them to other individuals. Easy-to-use interface with critical information at your fingertips.

- Allows for automated instrument management, enabling users to configure devices and transfer event data as needed
- Offers a convenient solution for managing multiple sites, with Device Assignment Kiosk and Multi-Site Management
- Centralized data management and reporting needs, providing the ability to easily generate reports and distribute them

BASIC PACKAGE

Safety Suite Basic is a free software package that includes select device configuration features and firmware updates at no extra cost.

- Allows customers to configure their safety devices before use
- Select device configuration includes configuring various instrument features and sensor alarm thresholds





TABLE 1. PACKAGE COMPARISON***

Module	Category	Feature	Basic (Free)	Lite (\$)	Deluxe (\$\$)	Premium (\$\$\$)
Device Management	Device Operations	Device & Sensor Configuration	✓	✓	✓	✓
		Device Configuration Templates	✓	✓	✓	✓
		Manual Firmware Updates	✓	✓	✓	✓
		Bump Test & Calibration Certificates		✓	✓	✓
		Automated Firmware Updates			✓	✓
	Data Operations	Download, Store, View & Export Data Logs / Event Logs			✓	✓
		Automated Data Download & Firmware Updates			✓	✓
		Scheduled Data Download			✓	✓
	Reporting	Event, Calibration & Bump Test Reporting			✓	✓
		Reports Customization			✓	✓
		Scheduled Reporting			✓	✓
		Reports Repository			✓	✓
	Advanced Features	Historical Data Dashboard			✓	✓
		Bump Test & Calibration Forecast			✓	✓
		Worker Device Assignment & Kiosk Mode			✓	✓
Real-time	Basic Features	Departments, Locations & User-Defined Fields			✓	✓
		Multi-Site Management**			✓	✓
		Real-time Instrument Readings				✓
	Advanced Features	Map View with Worker Location				✓
		Live Alarms/ Alerts				✓
		Real-Time Dashboard				✓
		Incident Playback				✓
		SMS Communication				✓
		Plume Modeling with Aloha				✓
		Emergency Evacuation Alerts				✓
		Live Event Notifications				✓
		Geo-fence Notifications				✓
		Data Sharing / Mutual Aid*				✓
		ChemResponder Integration*				✓
		EPA Viper Integration*				✓

* Features are only available with Safety Suite Responder

** Features are only available with Safety Suite Plant

***Customers have the flexibility of choosing a combination of Deluxe and Premium package based on the features available with the gas detectors. However, you cannot combine Deluxe, Lite, and Basic versions; you can only have one device management package per Safety Suite Installation.

Honeywell Safety Suite Technical Specifications



CLOUD INSTALLATION

The Cloud Solution of Safety Suite is tailored for users who require one Safety Suite database for all devices and users. The flexibility of the Cloud Solution supports an unlimited number of PCs and gateway installations that does not require users to share licenses between software installations. This installation flexibility allows customers the ability to scale and flex Safety Suite with the needs of their business.

TABLE 2. CLOUD INSTALLATION REQUIREMENTS

Hardware Requirements	
CPU	Intel Core® i5™ 1.8 GHz or higher
Memory	8 GB RAM
Hard Drive	10 GB minimum: 200 GB recommended
Display	Color monitor (at least 1366 × 768 resolution, 24-bit color)
USB Port	For instrument/modem connection
Sound Card	To enable local sound notifications
BLE	Intel® Wireless Bluetooth® Adapter for instrument BLE connectivity
LAN	Connection for network-connected instruments
Internet Connection	To view Google® Maps
Software Requirements	
Operating Systems	Windows® Server 2016 or above; Windows® 11; Windows® 10 (64-bit)
Web Browser	Chrome, Safari, or Edge



ON-PREMISE INSTALLATION

The On-Premise solution of Safety Suite is suitable for customers who may need the option of working offline, such as first responders and workers using the Safety Suite software in emergency response applications. The On-Premise solution requires all data to be stored locally on a PC which is perfect for companies who would like to manage their systems and cybersecurity protocols internally.

TABLE 3. ON-PREMISE INSTALLATION REQUIREMENTS

Hardware Requirements	
CPU	Intel Quad Core CPU 3.4 GHz or higher
Memory	8 GB RAM: 32 GB Recommended
Hard Drive	10 GB minimum: 200 GB recommended
Display	Color monitor (at least 1366 × 768 resolution, 24-bit color)
USB Port	For instrument/modem connection
Sound Card	To enable local sound notifications
BLE	Intel® Wireless Bluetooth® Adapter for instrument BLE connectivity
LAN	Connection for network-connected instruments
Internet Connection	To view Google® Maps
Software Requirements	
Operating Systems	Windows® Server 2016 or above; Windows® 11; Windows® 10 (64-bit)
Web Browser	Chrome, Safari, or Edge

Honeywell Safety Suite Software Solutions



SUPPORTED BW INSTRUMENTS

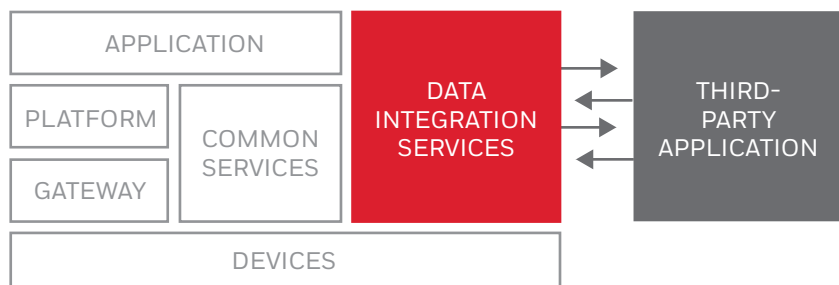
- IntelliDoX
- MicroDock II
- BW Clip, Clip RealTime, Clip4
- BW Flex, Flex 4
- BW Icon/Icon+
- BW Max XT II
- BW MicroClip XL/X3
- BW Quattro
- BW RigRat
- BW Solo
- BW Ultra
- BW Gas Alert Micro 5



SUPPORTED RAE INSTRUMENTS

- AutoRAE 2 Controller
- AutoRAE 2 Cradle for Handheld PID Monitor
- AutoRAE 2 Cradle for MicroRAE
- AutoRAE 2 Cradle For QRAE3
- AutoRAE 2 Cradle for ToxiRAE Pro
- AreaRAE Plus/Pro
- Meshguard Family
- MicroRAE
- MiniRAE 3000/Lite+
- MultiRAE, MultiRAE Lite/Pro
- ppbRAE 3000+
- QRAE3
- ToxiRAE Pro/Pro LEL/Pro PID
- UltraRAE 3000+

Safety Suite SDK Framework



APPLICATION INTEGRATION

The Software Development Kit (SDK) provides third-party product vendors and systems integrators the ability to merge real-time data from Safety Suite with external applications such as DCS (Decision Control Systems), public warning, and predictive analytics systems. Additionally, the SDK provides web services which internally communicate with Safety Suite to share real-time data with third party applications.

- Easily build customer monitoring and control solutions
- Broaden capabilities of existing applications
- Rapid and cost-effective integration
- Open platform for future expansion



SAFETY SUITE TRIAL SUBSCRIPTION*

You can try the Safety Suite Deluxe software before you buy it by signing up for a **six-month trial subscription for your entire fleet of detectors.**

You can try the Safety Suite Premium software before you buy it by signing up for a **one month trial subscription for up-to 10 detectors for 30 days.**

[Global Trial Sign Up](#)

[EU Trial Sign Up](#)

*Once the trial concludes, you can transition to the package that best suits your needs—Deluxe, Lite, or Basic.

WARRANTY/REMEDY

Honeywell warrants goods of its manufacture as being free of defective materials and faulty workmanship during the applicable warranty period. Honeywell's standard product warranty applies unless agreed to otherwise by Honeywell in writing; please refer to your order acknowledgment or consult your local sales office for specific warranty details. If warranted goods are returned to Honeywell during the period of coverage, Honeywell will repair or replace, at its option, without charge those items that Honeywell, in its sole discretion, finds defective. **The foregoing is buyer's sole remedy and is in lieu of all other warranties, expressed or implied, including those of merchantability and fitness for a particular purpose. In no event shall Honeywell be liable for consequential, special, or indirect damages.**

While Honeywell may provide application assistance personally, through our literature and the Honeywell web site, it is buyer's sole responsibility to determine the suitability of the product in the application.

Specifications may change without notice. The information we supply is believed to be accurate as of this writing. However, Honeywell assumes no responsibility for its use.

Honeywell Process Measurement and Control

2101 CityWest Blvd
Houston, TX 77042
www.honeywell.com

Bluetooth is a trademark or registered trademark of Bluetooth SIG, Inc.
Google and Chrome are trademarks or registered trademarks of Google LLC.
Windows and Edge are trademarks or registered trademarks of Microsoft Corporation.
Intel, Core, i5 are trademarks or registered trademarks of Intel Corporation.
Safari is a trademark of Apple, Inc.

GAS_Safety-Suite_DS | Rev C | 11/24
© 2024 Honeywell International Inc.

Honeywell