

IMPACT

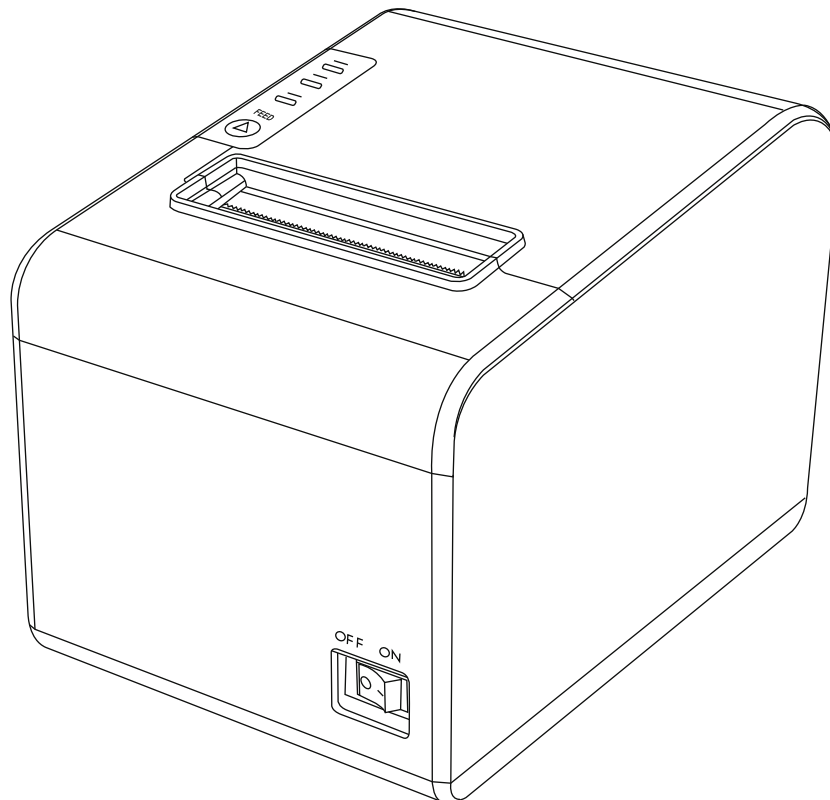
by Honeywell

IHR810 User Manual

User Manual

IHR810

Thermal Receipt Printer



Company: Honeywell International (India) Private Limited

Address: 1120- 21, 11th Floor, Tower A, DLF Tower, Jasola,

Jasola District Centre, New Delhi - 110 025, India

Customer complaints: impact.sps@honeywell.com

Toll Free Number: 1800-890-7447

Web: <https://impactbyhoneywell.com/>

For installation and software support :

<https://impactbyhoneywell.com/AIDC/ihr810-thermal-receipt-printer.html>

Rev 1.3



Contents

Manual Information	1
Important Safety Instructions	1
Chapter 1: Packing List	4
2-inch Receipt installation instructions	6
Button name, indicator LED light and function	8
Cautions	8
Chapter 2: Windows Driver Installation	9
Chapter 3: Settings of the Printer Driver	11
Chapter 4: Customize the Paper's Specifications	12
Chapter 5: How to configure IP address for Ethernet port	15
Chapter 6: Add IP Port When Using Network Interface Machine	19
Chapter 7: Installation And Operation Instruction For Switching Function Of USB Port And Virtual COM	23
Chapter 8: Settings of the Bluetooth Printer using utility	29
Chapter 9: Bluetooth Printer installation	31
Chapter 10: Linux Driver Installation Instruction	36
Chapter 11: MAC Driver Installation Instruction	42
Chapter 12: IMPACT IHR810 Utility Tools Instruction	45

■ Statement

This manual content may be altered without permission, and our company reserves the rights to make changes without notice in technology, spare parts, hardware and software of the products. If more information is needed about the products, please contact our company. Without any written permission from our company, any section of this manual is prohibited to be copied or transferred in any form.

■ Copyright

This manual is printed in 2022, the copyright belongs to Honeywell International (India) Private Limited. 1.1 Version

■ Warnings



This must be complied with in order to avoid any damage to the human body and the equipment.



This is showing the important information and tips for the printer operation.



Note: Due to continuous update of our product, the description of printer specification, accessories, design in this manual may be slightly different. Please keep in kind prevail.

Manual Information

This user manual contains basic information for product usage as well as for emergency measures that may be required. The installation and usage of printer driver, utility tool are also included in the manual.



WARNING

The company reserves all rights to modify the technology, components, software & hardware. No part of this manual can be changed without agreement. No part of chapter in this manual can be copied or transmitted in any format without permission.

Important Safety Instructions

Before using the present appliance, please carefully read the following safety regulations in order to prevent any hazard or material damage.

1. Safety warning



Warnings: The print head will become very hot during printing; avoid contact with the print head after printing has finished.



Warnings: Do not touch the printer head and connector in case static damage the printer head.

2. Instructions



Warnings: Violating following instructions may cause serious injury or death.

1) Do not plug several products in one multiperture outlet.

- This can provoke over-heating and a fire.
- If the plug is wet or dirty, dry or wipe it before usage.
- If the plug does not fit perfectly with the outlet, do not plug in.
- Be sure to use only standardized multiperture outlet.

2) You must use the supplied adapter.

- It is dangerous to use other adapters.

3) Do not pull the cable to unplug.

- This may damage the cable, which is the origin of a fire or a breakdown of the printer.

4) Do not plug in or unplug with your wet hands.

- You may be electrocuted.

5) Do not bend the cable by force or leave it under any heavy object.

- A damaged cable may cause a fire.



Note:

Violating following instructions may cause slight damage of the appliance.

1) If you observe a strange smoke, odour or noise from the printer, unplug it before taking following measures.

- Switch off the printer and unplug the set from the mains.
- After the disappearance of the smoke, call your dealer to repair it.

2) Install the printer on the stable surface.

- If the printer falls down, it may be broken and you may hurt yourself.

3) Use the approved accessories only and do not try to disassemble, repair or remodel it by yourself.

- Call your dealer when you need these services.
- Do not touch the blade of auto cutter.

4) Do not let water or other foreign objects drop into the printer.

- If this happened, switch off and unplug the printer before calling your dealer.

5) Do not use the printer when it is out of order. This can cause fire or an electrocution.

- Switch off and unplug the printer before calling your dealer.

6) Other considerations:

- Place the printer on a solid and even base so that it cannot fall.
- Leave enough space around printer for operation and maintenance.
- Keep all liquids away from the printer.
- Do not expose the printer to high temperatures, direct sunlight or dust.
- Ensure the printer is connected to a socket with the correct mains voltage.
- Switch off the printer POWER supply when it's not in use for a long time.
- To ensure the printing quality and reliability, suggest use the same quality or recommend paper supplier.
- Please switch off the POWER supply when connect/disconnect all the ports or it will cause damage to the printer control circuit.
- Never carry out maintenance or repair work yourself. Always contact a qualified service Technician.
- Keep this User Manual in a place which is easily accessible at all times.

3. Other Precautions

The copyright for this user manual and various other manuals is property of our company. Any copying or conversion into electronic form and saving of this material without the express written permission is strictly prohibited. Use of the information contained in this manual is not subject to any patent liability. This manual has been prepared with utmost care and attention to detail but may contain certain errors and/or omissions. Our company is not legally liable for any damages resulting from the use of the information in this manual. Our company and its affiliates are not legally liable for any damages, loss, costs, and/or expenses that result from the breakdown, malfunction, and/or misuse of the product due to violation or neglect of the operation and maintenance information and instructions provided by our company, as well as from the unauthorized alteration, repair, and/or modification of the product by the user and/or third party. We are not legally liable for any damages and/or issues resulting from the use of options and/or parts that are not authentic or authorized products.

4. WEEE (Waste from Electrical and Electronic Equipment)



The copyright for this user manual and various other manuals is property of our company. Any copying or conversion into electronic form and saving of this material without the express written permission is strictly prohibited. Use of the information contained in this manual is not subject to any patent liability. This manual has been prepared with utmost care and attention to detail but may contain certain errors and/or omissions.

Our company is not legally liable for any damages resulting from the use of the information in this manual. Our company and its affiliates are not legally liable for any damages, loss, costs, and/or expenses that result from the breakdown,

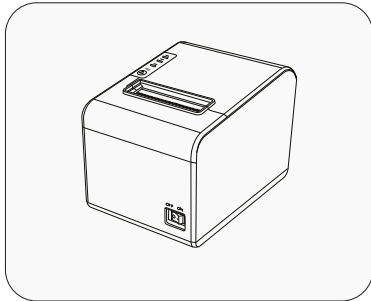
malfunction, and/or misuse of the product due to violation or neglect of the operation and maintenance information and instructions provided by our company, as well as from the unauthorized alteration, repair, and/or modification of the product by the user and/or third party. We are not legally liable for any damages and/or issues resulting from the use of options and/or parts that are not authentic or authorized products.



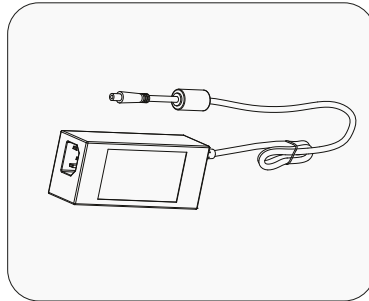
Caution: This is a Class A product. In a domestic environment this product may cause radio interference in which the user may be required to take adequate measures.

Chapter 1

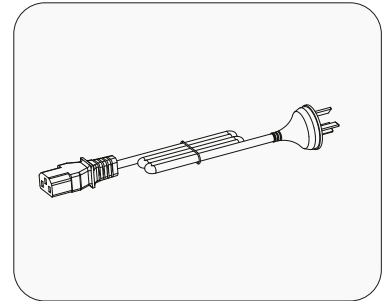
Packaging List :



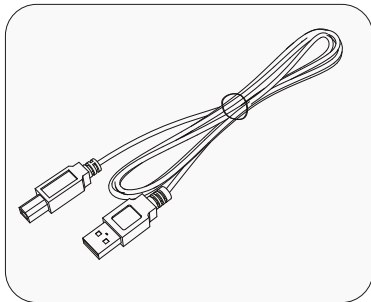
Thermal Receipt Printer



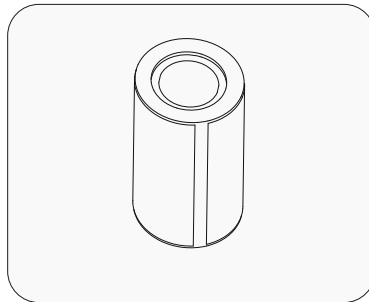
AC Adapter



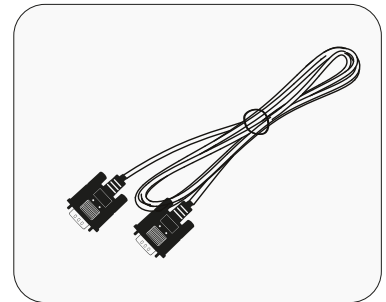
Power Cord



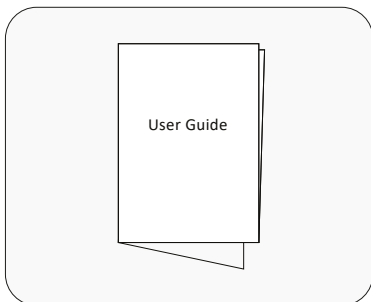
USB Cable



Label Roll (80 mm)



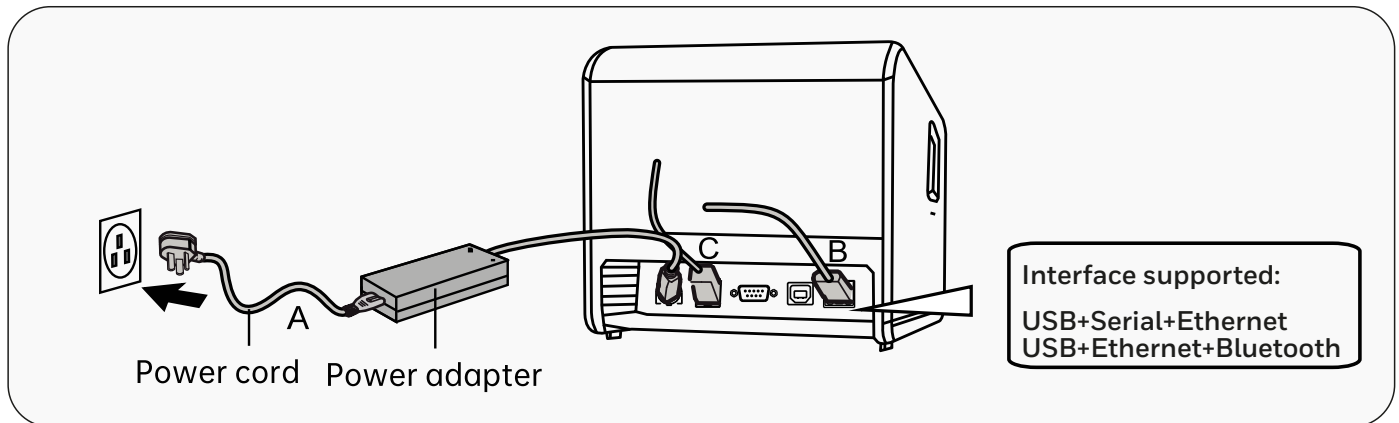
Serial Cable



Quick Start Guide

Connecting the cables

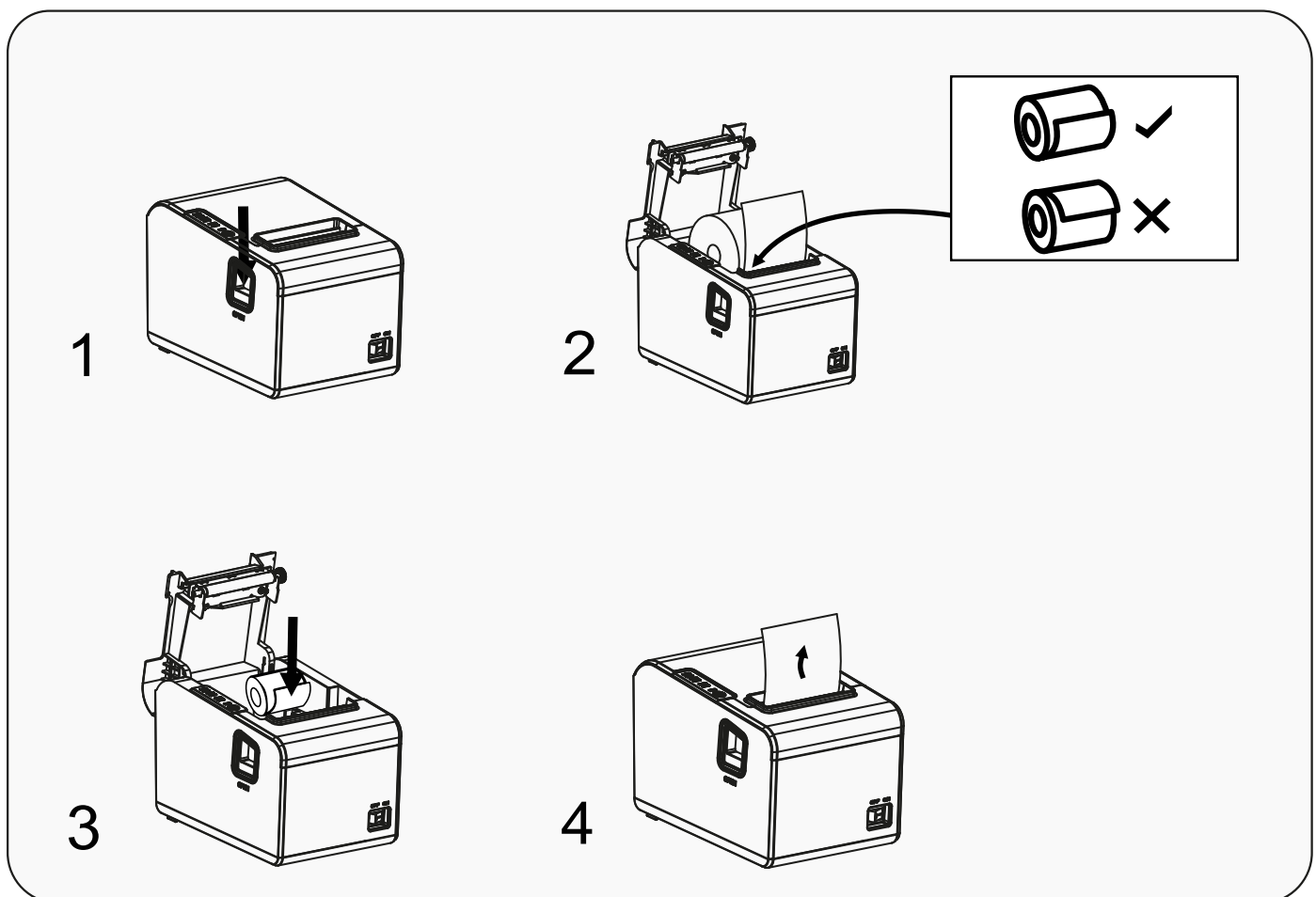
- A. Connect the adapter cable to the printer power interface.
- B. Connect the data cable to the printer port.
- C. Connect the cash drawer to the printer.



Paper roll installation

Follow the steps below to install the roll paper :

1. Open the roll paper cover.
2. Insert the roll paper as the following illustration shows.
3. Pull out a small roll of paper and close the roll paper cover.
4. Tear up the spare roll paper.

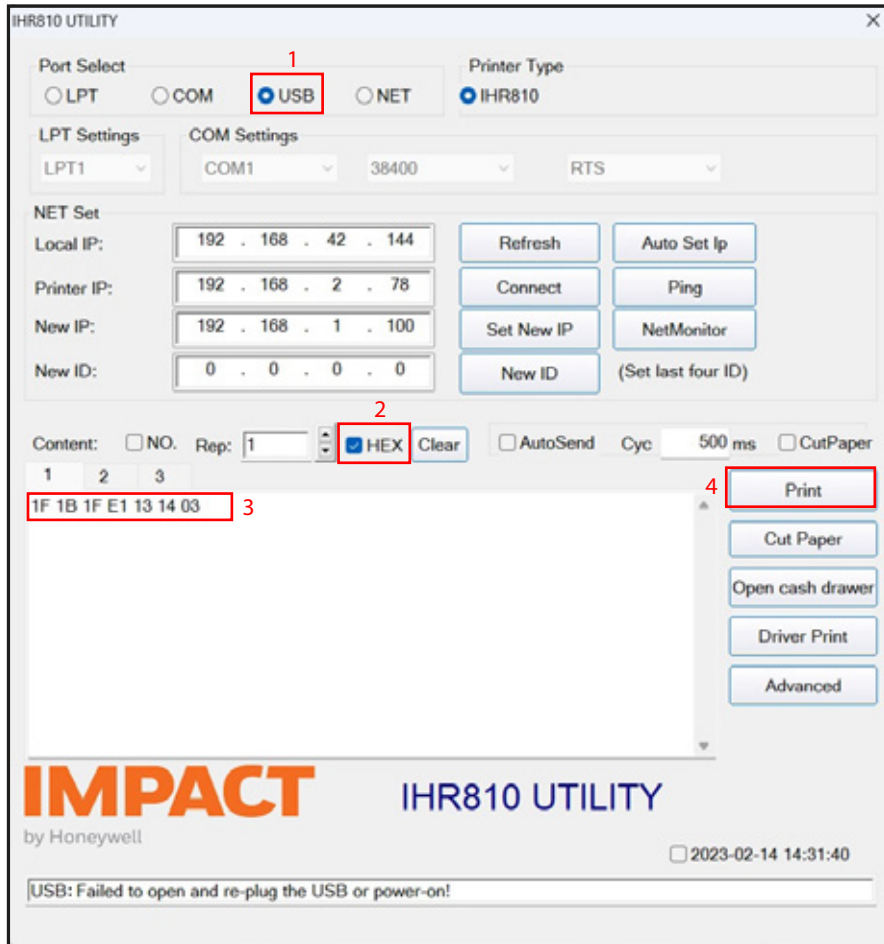


2-inch Receipt installation instructions:



1. Open the printer cover
2. Install the 58/80mm partition on the slot of the paper cabin
3. Load the 58mm paper roll
4. Close the printer cover
5. Turn on the printer

6. Open the utility of the printer
7. Connect the printer to the computer with USB cable



7. Tick the box of "Hex" on the utility
8. Input the command: 1F 1B 1F E1 13 14 03 on the utility test box
9. Click "Print" then the 58mm paper printing setting is finished.
10. To Convert the printer into a 3-inch receipt, send the command: 1F 1B 1F E1 13 14 00 as per the above instructions.

Button name, indicator LED light and function

1. FEED button

Press the FEED paper manually.

2. Paper indicator (LED light)

If blue and red lights are on, which means lacking of paper. No alarm means normal status.

3. Power indicator

If light on, which means connecting properly.

4. Error indicator

When paper out, cutter error or printing head overheat, the alarm indicator beeps.

Self Test

Method : When the printer is power-connected, press "FEED" button and turn on the printer at the same time. Release the "FEED" button 2 seconds later, then the completed self test page will be printed out to show printer setting.

Method to enter hexadecimal mode

Method : When the printer is power-connected, press "FEED" button and turn on the printer at the same time. For about 10 seconds, release "FEED" button to enter data hex dump mode. It will print "Hexadecimal Dump" on the paper.

Reset

Method : When the printer is power-connected, press "FEED" button and turn on the printer at the same time for about 20 seconds. Resetting succeeded if beeps.

How to solve paper jam

1. Method one : Restart printer.
2. Method two : Open the cover near the paper exit. Turn the gear on the cutter of the printing head, the cutter can be returned to the initial position. Then the printer can be print normally after opening the cover to reload the paper.

Caution: Do not forcibly open the cover to avoid damage to the printing head and cutter.

1. Be sure to install your printer on a stable surface and prevent it from vibration and impact.
2. Do not use and store in locations subject to high temperature, humidity or pollution levels.
3. Connect the power adapter into a properly grounded outlet. Do not share the same plug socket with large-scale electrical motor or other motors which may cause the power supply voltage fluctuations.
4. Avoid water or other conductive materials such as metal getting into the intern of printer. If it happens, unplug the AC power cord immediately.
5. Do not print without paper, or it will damage the rubber roller and thermal printing head.
6. Unplug your printer before leaving it unused for an extended period.
7. Never disassemble or modify the printer for repair or reconstruction.
8. Be sure to use the original specified power source.
9. Quality roll paper is recommended for premium printing and product maintenance.
10. Be sure to turn the printer off when plugging and unplugging.
11. Place the plug socket around the printer for convenience.
12. This printer is used only below 5000 meters above sea level in tropical climate conditions.

Clearance

Timely clean the printing head if one of the below conditions occurred:

1. Unclear printing.
2. Unclear vertical column in printing paper.
3. Noisy feeding.

Cleaning steps are as follows:

1. Turn off the printer and open the roll paper cover. Remove the roll paper if any.
2. After printing, the thermal printing head can be very hot. Wait till the thermal printing head is cool before cleaning.
3. Clean the thermal elements of the thermal printing head with a wrungout cotton moistened with an alcohol solvent.
4. Wait till the ethanol completely volatilized to close cover. Then print selftest page.

Notice

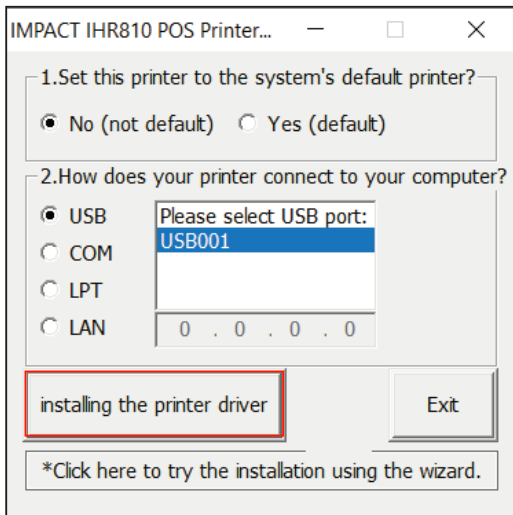
1. Please make sure power off when maintaining printer.
2. Don't touch or scratch printing head surface, roller and sensors.
3. Avoid gas, acetone or other organic solvent.
4. Wait till alcohol completely volatilized, close top cover and connect power again. Try print self-test page to make sure it works properly.

Chapter 2

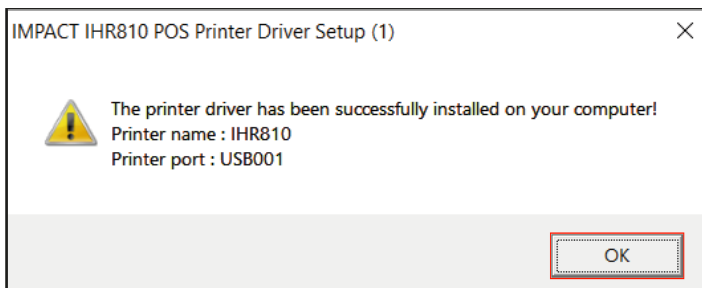
Windows Driver Installation Instruction.

To Download IHR810 Printer Windows Driver [Click Here](#).

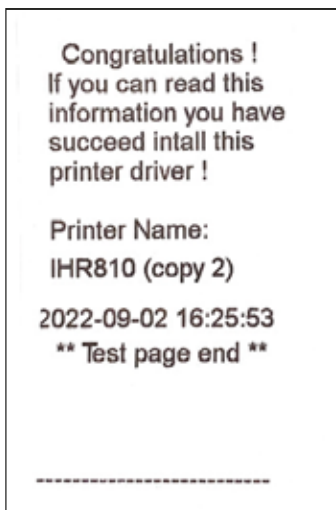
1. Select one interface to connect your printer to computer. Turn on the printer and check if it is connected to computer successfully. Double click on "IMPACT IHR810" POS printer Driver setup.exe". Then click on installing the printer driver" as per below image.



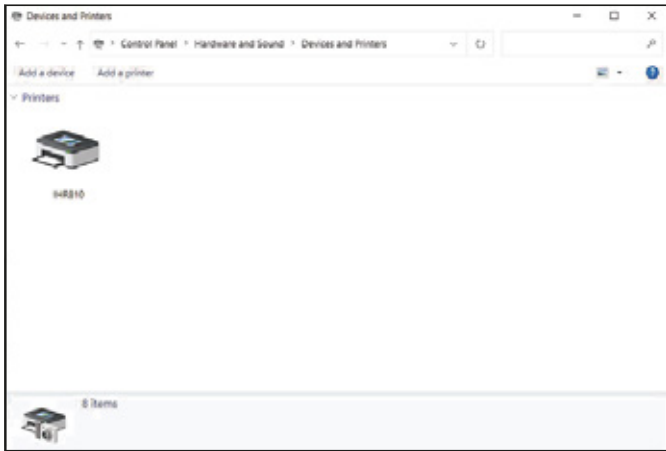
2. After successful installation you will see this pop-up on your screen Click OK.



3. You will be receive this print after successfully installing the driver.



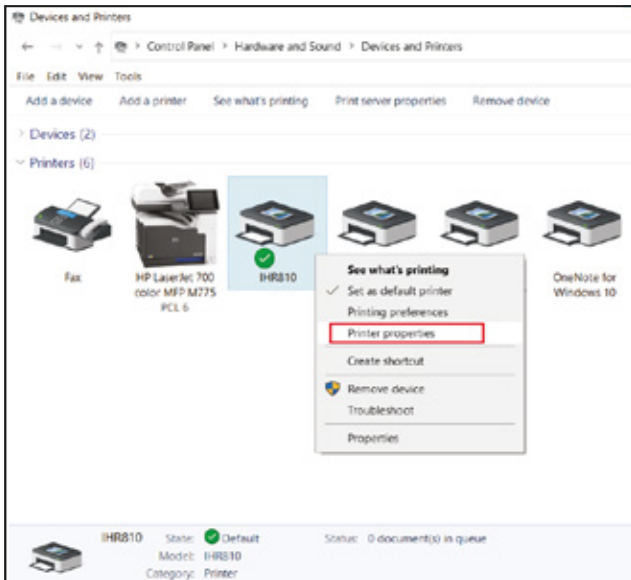
4. You should now see the driver in the device and printer section of your windows settings.



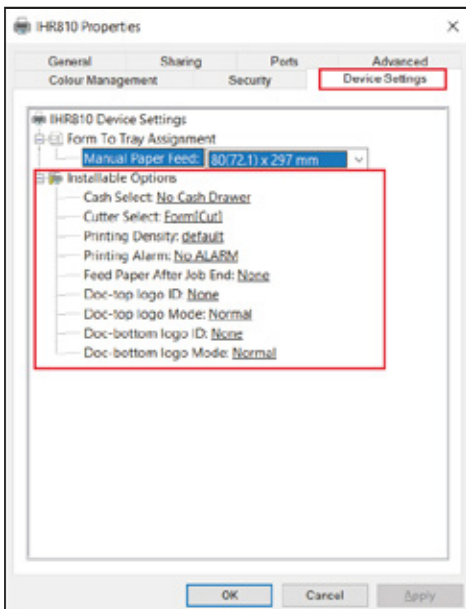
Chapter 3

Settings of the Printer Driver.

1. Find the icon of “Printer Driver” that has already been installed, click the right mouse button, and the “Printer Properties” are shown in the following picture



2. Click “Device Settings”, then clients could set up the device according to their own needs. See the following picture.

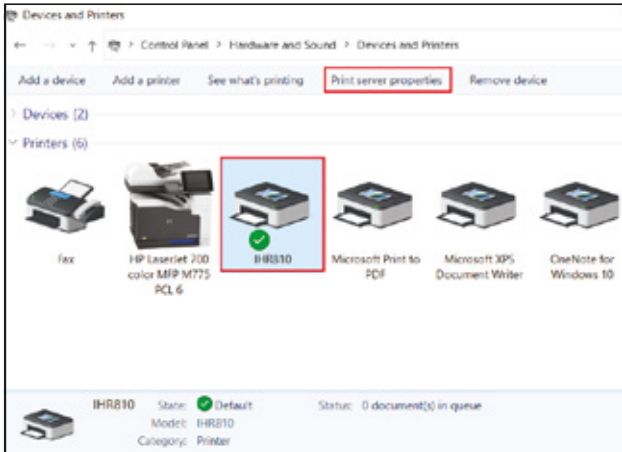


Chapter 4

Customize the Paper's Specifications.

According to personal needs, clients could alter the paper's size by their own. Take WIN 10 operating system for an example. The specific operations are as follows.

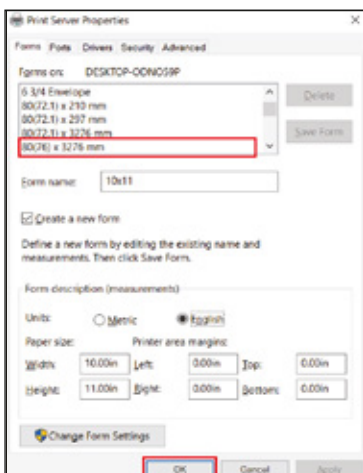
1. Click the icon of the installed printer under the "Devices and Printers". Then choose the "Print Server Properties".



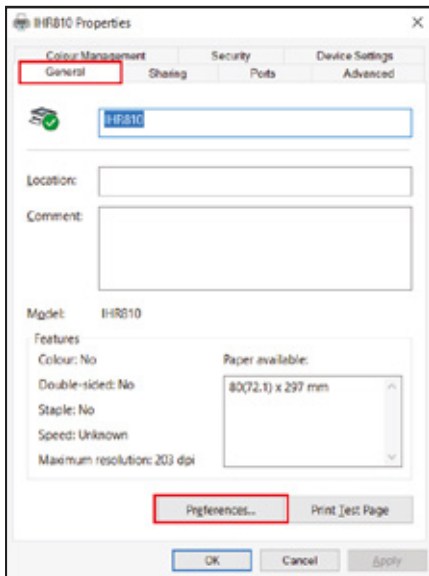
2. After the menu popping up, firstly find the format of the paper's specifications which has been installed through the printer driver. Next, same operations could be taken as the following picture shown.



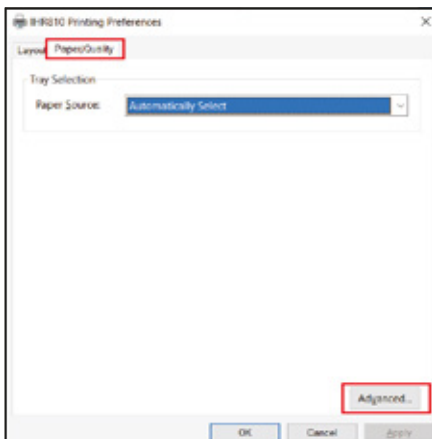
3. After finishing the above settings, click the "Save Menu" button. The Form's name which has already been set up could be found in the tab of "Form". As the following picture shown. Then, close the dialog box.



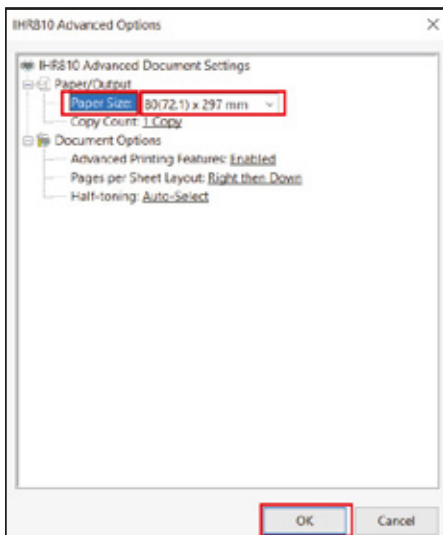
4. Enter “Devices and Printers”, and press the right mouse on the option of “Printer Properties”. After the dialog box popping up, choose the “Preferences” option.



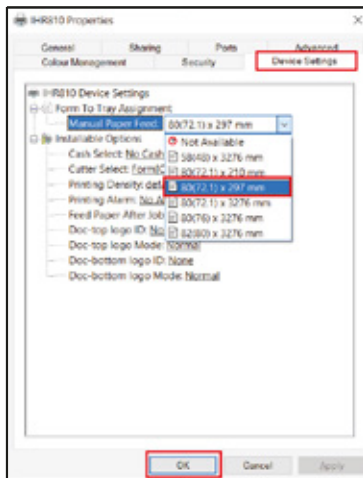
5. “Paper/Quality” – “Advanced”. See the following picture.



6. Find the new paper size which was set in the “Paper Specifications”. Press the “OK” button and close the dialog box. See the following picture.



7. Return to the tab of “Device Settings” and select “Paper Specifications”. Then click the “OK” button. See the following picture.



Chapter 5

How to Configure IP Address for Ethernet Port.

Three ways to configure printer IP address:

- a) Make configuration directly by IMPACT IHR810 Utility software.
(To download IMPACT IHR810 Utility software [click here.](#))
- b) Make configuration by sending the command codes;
- c) Make configuration by browsing the WEB;

I. Make configuration directly by IMPACT IHR810 Utility software:

- 1. Printing Self-test to check the printer's own IP address (factory default IP: 192.168.123.100); self-test method: turn off the printer, then turn on the printer while holding down the FEED button, 2or 3 seconds later, release the FEED button and a page with the title " self test" will be printed out as shown by the picture below:

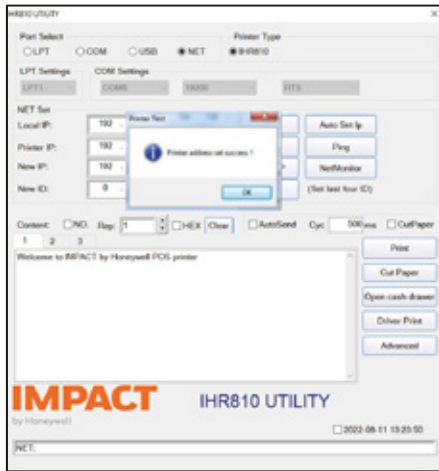


- 2. Confirm the printer IP address and then connect the printer to a computer through a hub, switch or cable directly (direct interconnection method). (Note: the IP address may not be modified if the connection is established through a router) Change the IP address by the IMPACT IHR810 Utility software is as follows:



- 2.1 Port selection----- NET
- 2.2 Printer Type ----- IHR810
- 2.3 Local IP ----- The computer IP address. Click "refresh" button, the computer IP address will be displayed. (Note: if the refreshed IP address is 0.0.0.0, then it means the local IP conflicts with other devices, and make sure your IP address is unique)
- 2.4 Printer IP -----the IP address on the self test page. (If the local IP and the printer IP are in the same network segment, printing test can be conducted by clicking "connection test" button.
- 2.5 New IP address -----Enter the IP address you want to change to, click "Set New IP" button to complete the IP setting.

3. Click "Set New IP" button, the computer will wait for 10 seconds before a prompt window appears indicating successful setting. In the process of resetting IP, the computer will be cut down and then automatically reconnect as shown in the picture below:



4. After the prompt window indicating "printer address successfully set " appears, print self test page again to see if the IP address has been modified, as shown in the picture below:

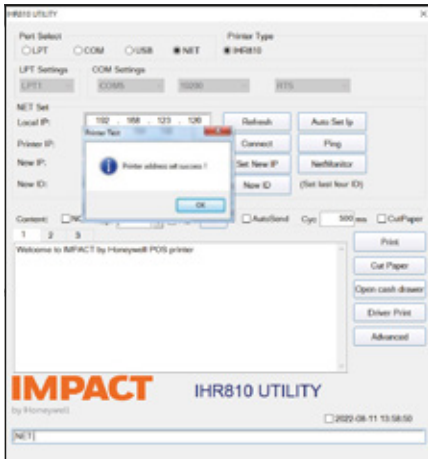


Note: if the above methods to modify the IP address are not successful, it's suggested that the computer IP address and the printer IP address shall be set within the same network segment: 192.168.123. XXX, before connecting the printer (excluding the router method) to the computer and using utility tools to modify the IP. Specific method is as follows:

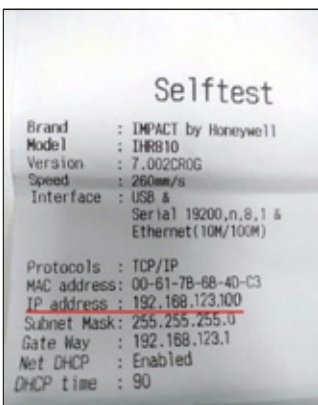
1. Click online neighbors - local connection - property - Internet protocol, then manually configure IP as shown in the following pictures:



2. Reopen the IMPACT IHR810 Utility software again, click "refresh" button to update the local IP address, then click the "connection test" button, after the prompt window indicating the successful connection appears, click the "set up IP" to modify the printer IP address. Please refer to the picture below:



3. Printing the Self test again to see if IP address has been modified successfully:



The above self test page shows that the new IP address has been set successfully. This method is suitable for all Ethernet port printers.

II. Make configuration by sending the command codes

There are two other modification methods, the first method is as follows:

1. Connect the printer to the computer through the serial port, USB port and the Ethernet port, then test the USB or serial port for normal communication, if the test is OK, send command via a serial port or USB port to modify the Ethernet port IP (Command:1F1B1F91004950ip1~ip4). Please refer to the following picture



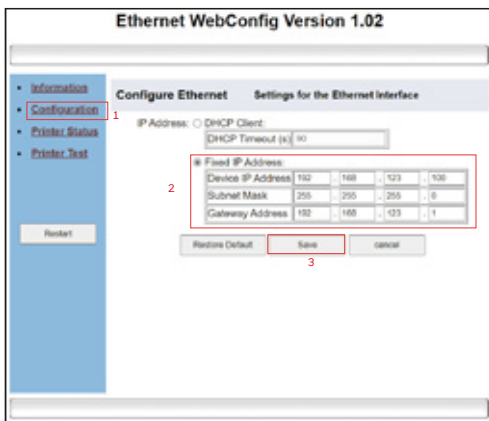
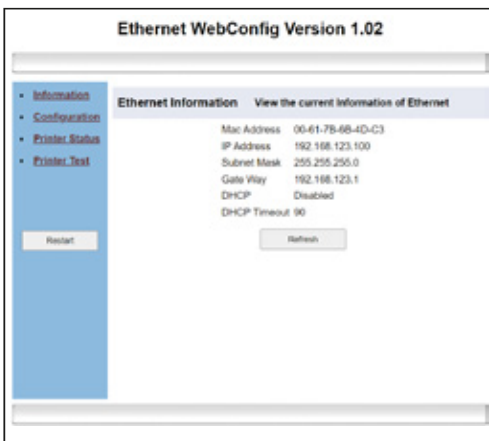
- (1) : Select a serial port or USB port
- (2) : Select a printer type
- (3) : Choose HEX
- (4) : Input command code to change the IP in the printing content box: 1F1B1F91004950COA81364, this is the IP address, as shown in the above picture, IP address is 192.168.19.100, and the corresponding hexadecimal is COA81364.
- (5) : Finally click "print" button, and the printer will beep once, it suggests the command has been sent successfully. Finally, self check the printer again to see if the IP address has been modified.

III. Make configuration by browsing the WEB

Second method to change the IP address is through the WEB. The specific

Method is as follows:

1. Make the computer IP address and the printer IP address get into the same net work segment as described in details above.
2. Open your browser; enter the IP address of the printer in the address bar, for example, the current printer IP is 192.168.123.100, as shown in the picture below



- (1) : Click "Configuration" button.
- (2) : Input the IP address, subnet mask and gateway address you want to set respectively in the three lines
- (3) : Click the "Save" button to save the related Setting information

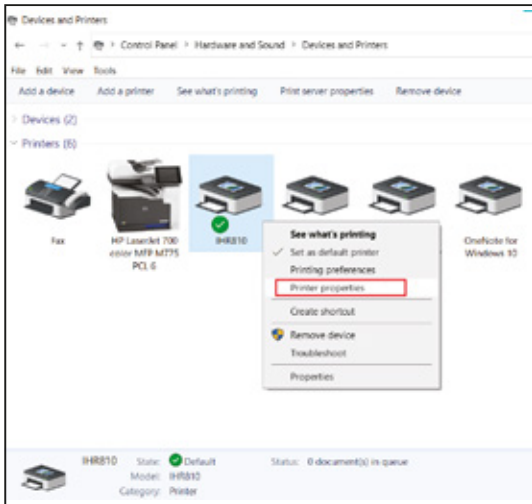
Note: That only the printers and computer within the same network segment are allowed to enter the WEB configuration interface.

Chapter 6

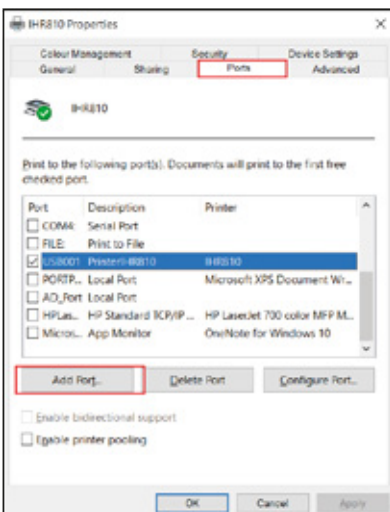
Add IP Port When Using Network Interface Machine.

When finishing the installation of the printer's driver, it demands to add an IP Port to the Driver when using Network Interface machines. Take WIN 10 operating system for an example. The specific operations are as follows:

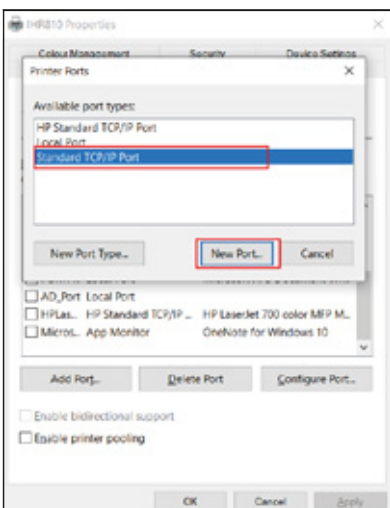
1. Find the icon of the driver that has already been installed. Right click the "Printer Properties". See the following picture.



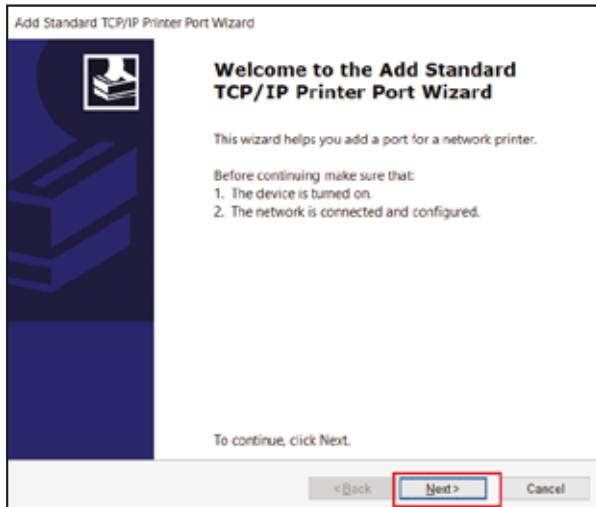
2. Click "Ports", and choose "Add Port" option. See the following picture.



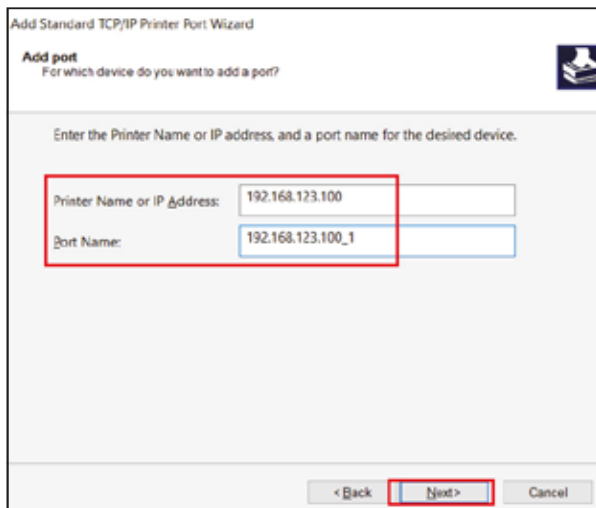
3. Choose "Standard TCP/IP Port", then click "New Port". See the following picture.



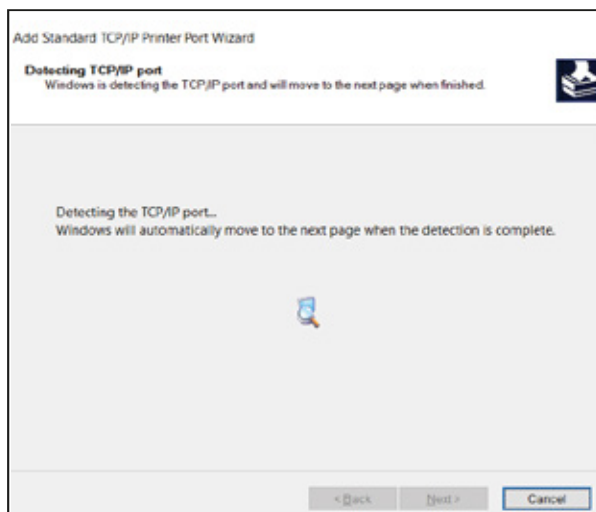
4. Click "Next Step".



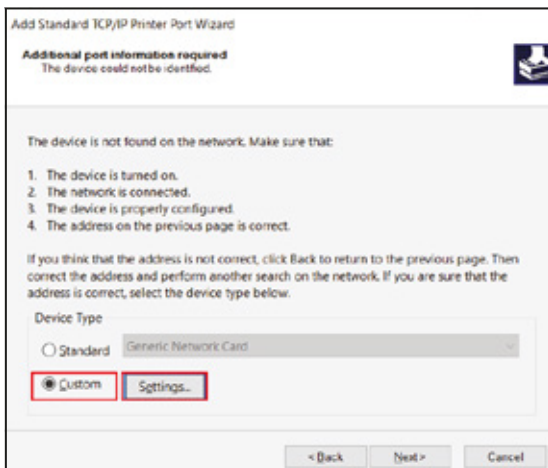
5. Input the current IP address of the printer. The Port's name is generated automatically. See the following picture.



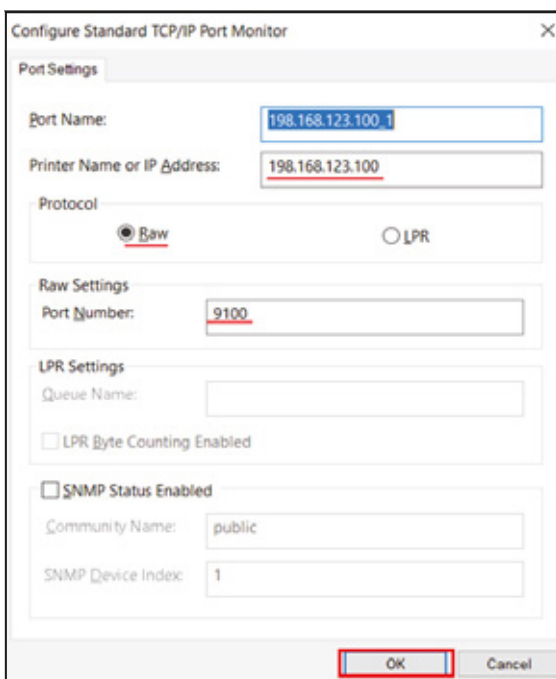
6. Wait about 5 to 10 seconds to detecting the port. See the following picture.



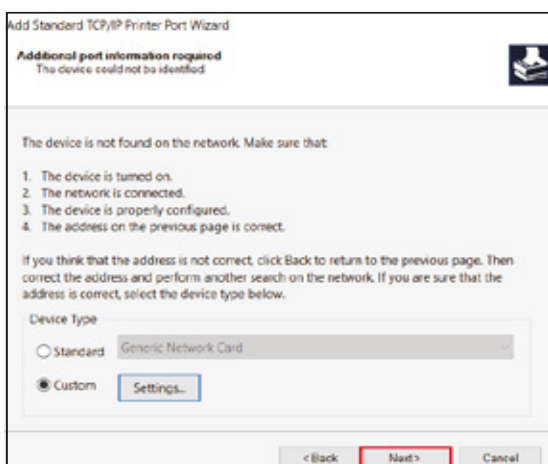
7. Choose “Custom”, then click “Settings” . See the following picture.



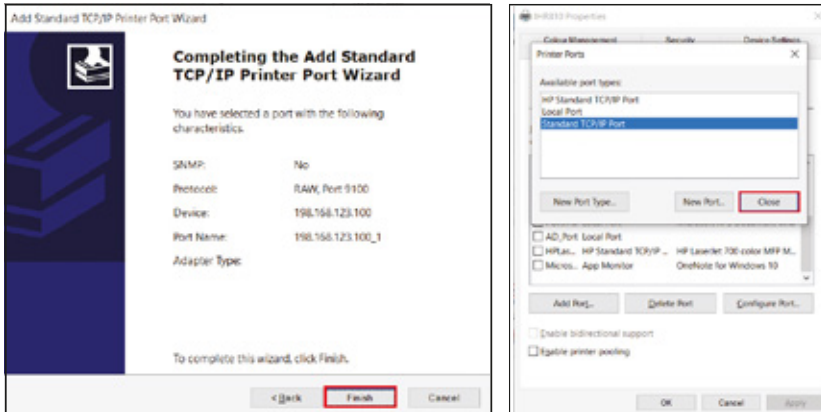
8. Check the parameters of “Protocol” and “Port number”. Then click the “OK” button as the following picture shown.



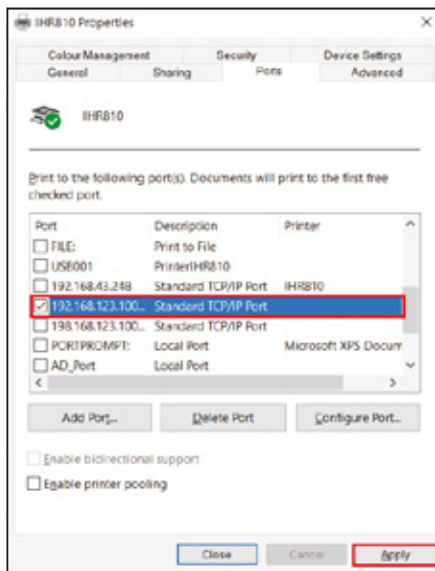
9. Click “Next Step”.



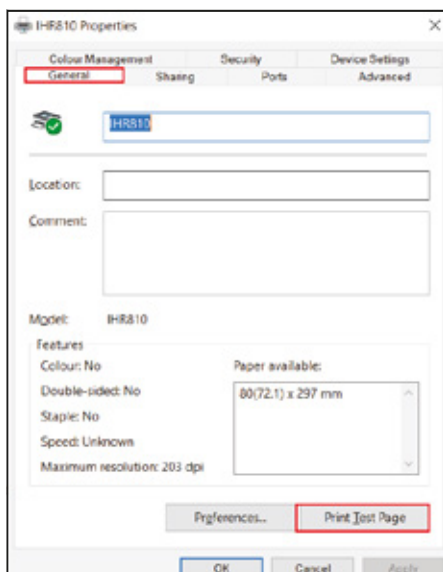
10. Choose “Finish”—close the “Add Dialog Box”.



11. After finishing the above steps, a just added IP port could be generated in the driver’s port. Click the “Apply” button. See the following picture.



12. Choose the “General” tab, and click “Print the Test Page” button. See the following picture.



If there is a test page printed by the printer, it means that the Driver’s installation has been finished.

Chapter 7

Installation And Operation Instruction For Switching Function Of USB Port And Virtual COM.

To Download IHR810 Printer Virtual COM Drivers [Click Here](#).

Instructions for switching function of USB port and Virtual COM

Instruction code:

Decimal system: 31 27 31 184 19 20 N

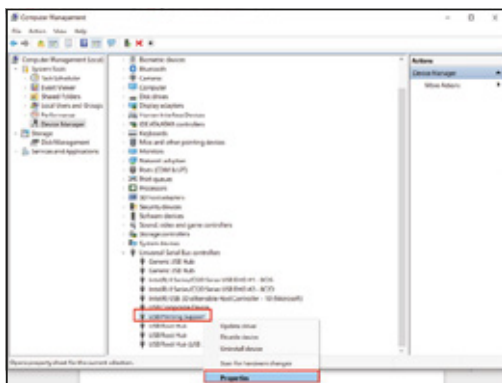
Hexadecimal system: 1F 1B 1F B8 13 14 N

Functional description: you can switch to the real USB port or USB Virtual COM;
value ranges of N, notes: N=0, USB port; N=1, Virtual COM.

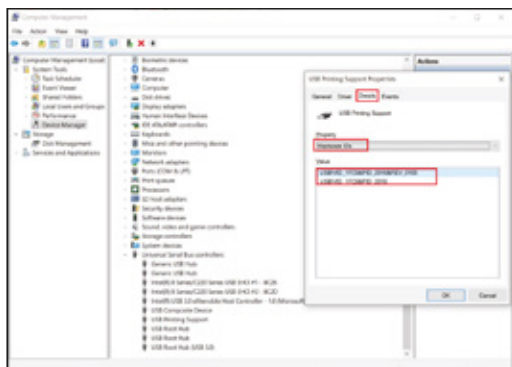
Both the NXP chip and ST chip support this function, you should firstly confirm which kind of chip and install the driver according to the type of chip.

I. How to view NXP chip and ST chip

1. At first, go to the Universal Serial Bus controllers of Device Manager and find USB printing support; as shown in the following picture.

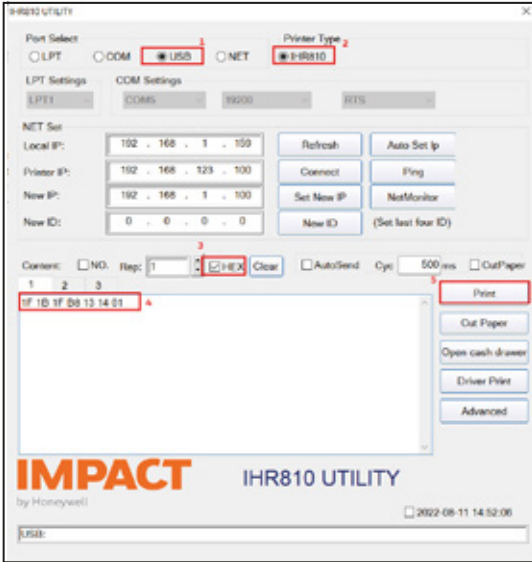


2. View VID/PID information on USB port, as shown below:

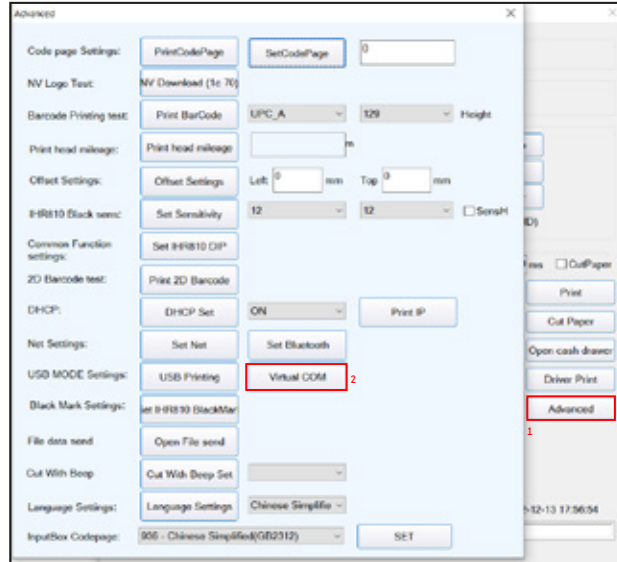


You can view the NXP chip information in the above picture; USB port VID/PID information 0483/5743 of ST chip

II. Take the WIN 10 system as an example, the installation instruction of NXP chip program should be operated as follows:
 1. Send instructions by modifying tools of the printer or directly click Switch button, provided that the on-line testing of the printer and the computer is normal.

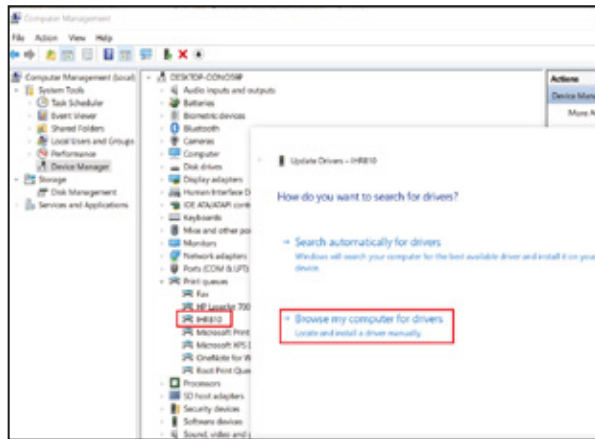
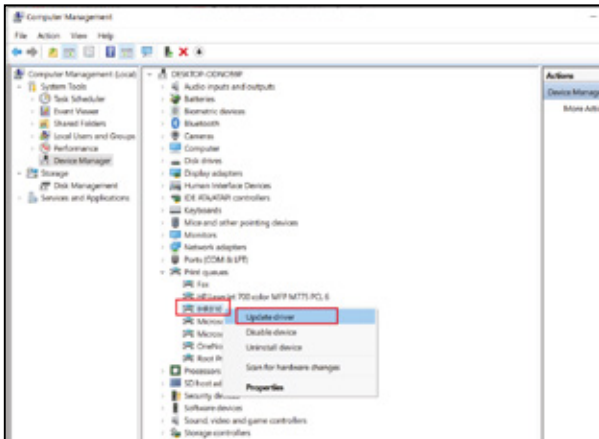


Method 1

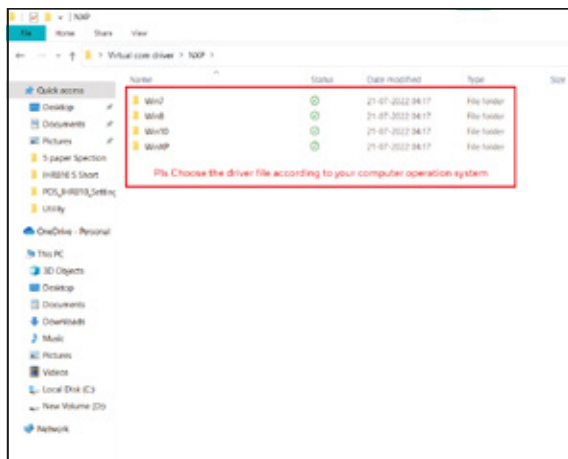
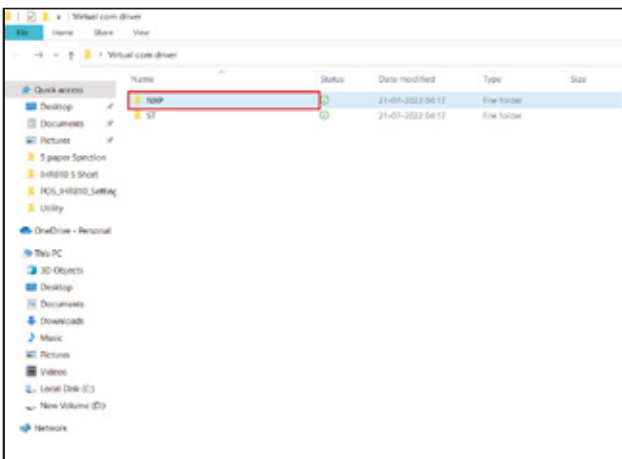


Method 2

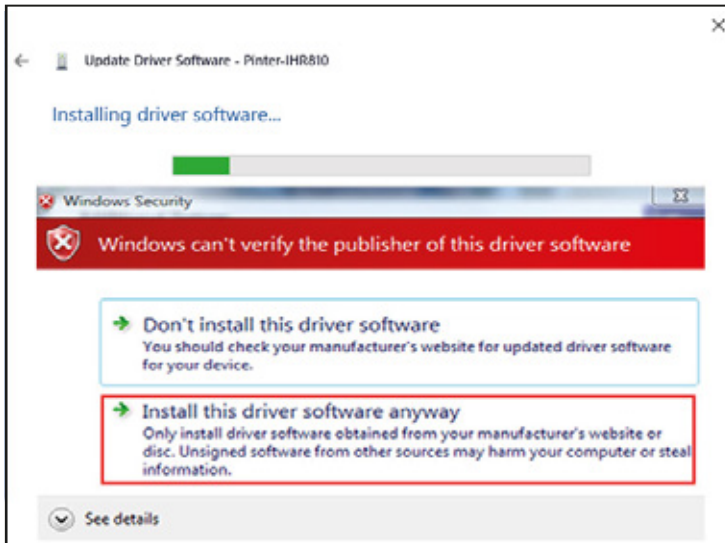
2. After the first step, install the Virtual Com driver to the printer; firstly go to the Device Manager and find the unknown device with a question mark, click the right key to select Red box 2 under the option "Update Driver Software..."; as shown below:



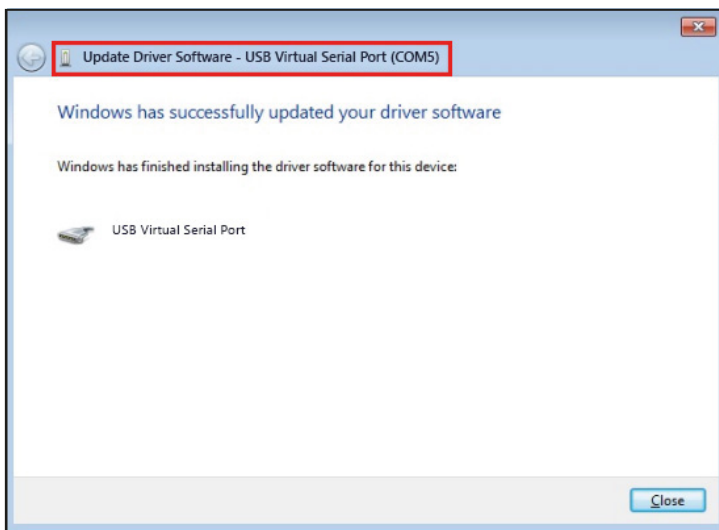
3. Click "Browse", you can browse the folder that contains drivers, as shown below:



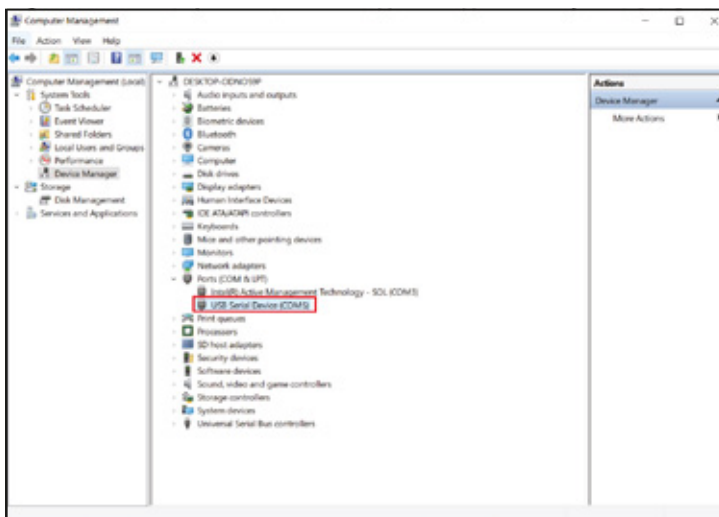
4. If the driver starts installation and the dialog box pops up, please choose “Install this driver software anyway” and then go on the installation, as shown below



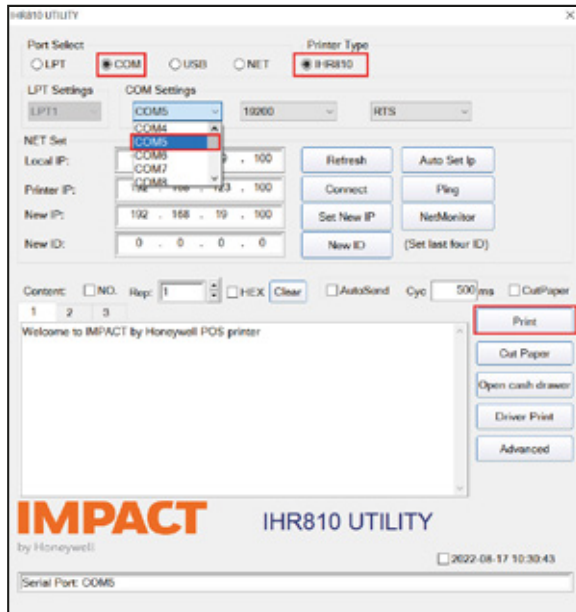
5. After the completion of the installation, the COM port generates automatically, as shown below:



6. Click “Close”, you can check the newly-added COM port in “Ports” of the device manager, as shown below:

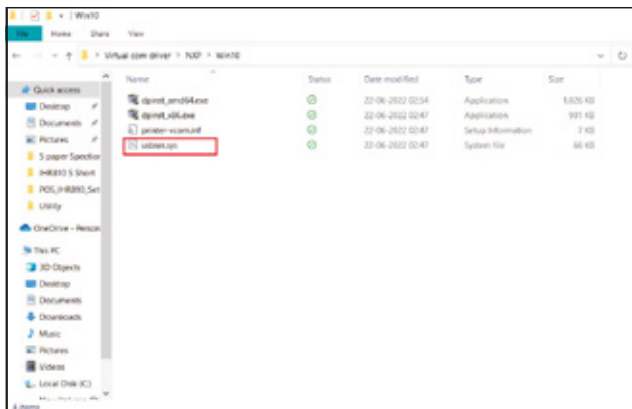


7. After the installation of the driver, you should select the auto-generated COM port in the software or the driver to connect to the USB data, as shown below:

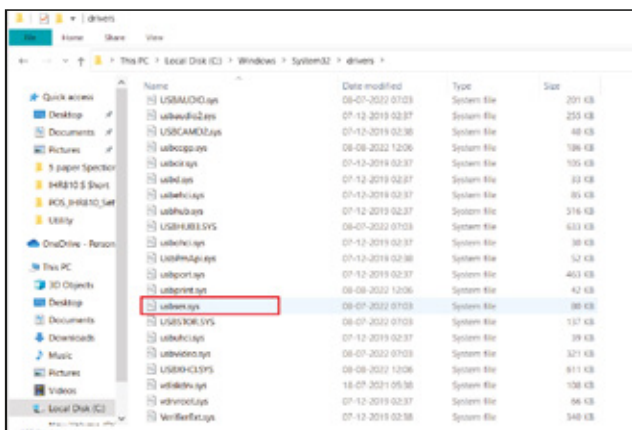


Prompts: If the installation failed, firstly copy “usbser.sys” file in Favorites of the driver to Disk C of the computer, and install it once more. The specific operation as shown follows:

A: Browse the Favorites of the Driver and find the file, as shown below:



B: After you find this file and copy it to the Computer: /windows/system32/drivers

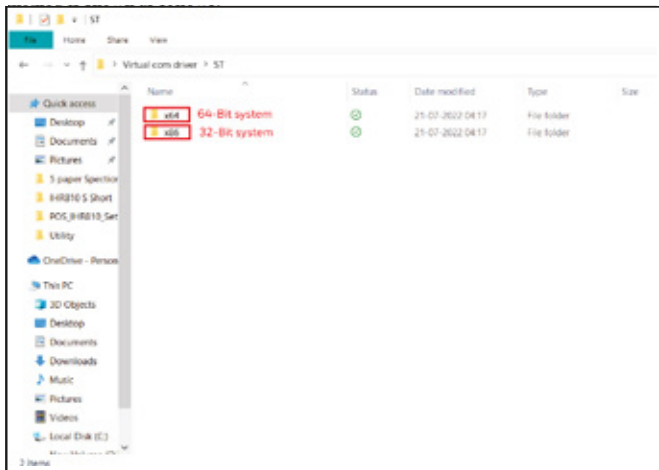


After the completion of 2 steps, please reinstall it.

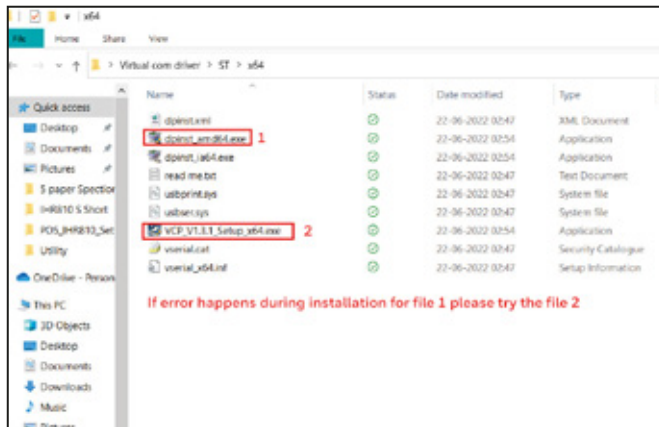
III. Installation instruction for ST chip program is shown as follows:

The installation instruction for Virtual COM of NXP chip has been mentioned above, the driver program of Virtual COM of NXP chip is installed in the similar way. At first, send Switch Function Instructions of USB port and Virtual COM by modifying tools of the printer, refer the foresaid step (II)(1); and then install the driver of Virtual COM of ST chip in two ways, first, select EXE file in the corresponding operating system and install it directly, second, add the install method (see Operation of NXP chip).

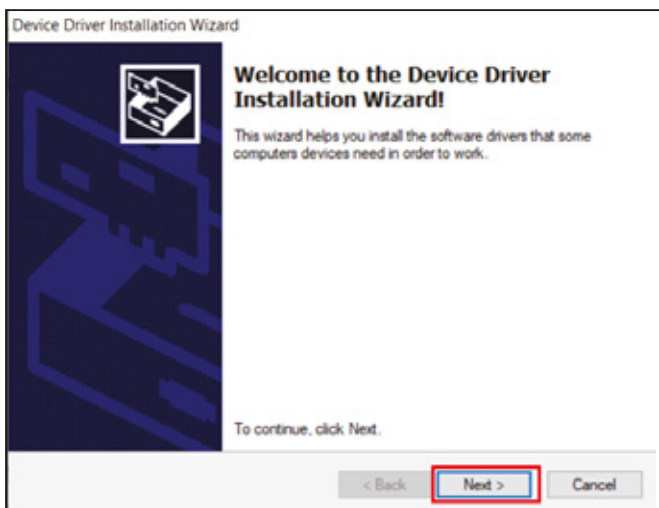
The first method is shown as follows: Please choose the right installation folder according to PC system



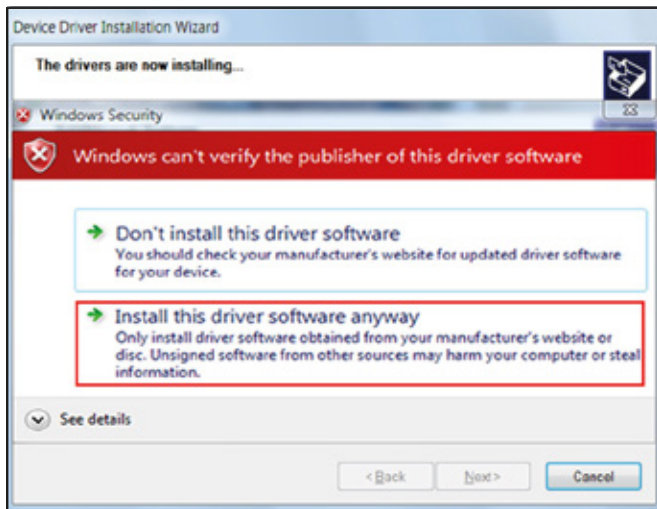
1. Browse the Favorites of the Driver and find the EXE file, as shown below:



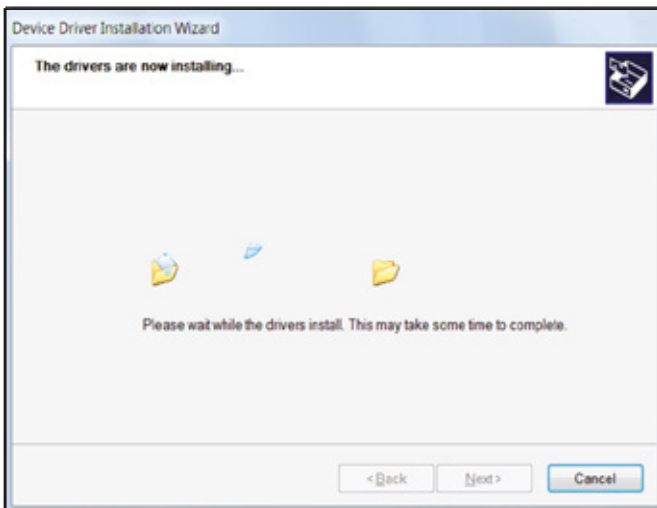
2. After double-click, click "Next" and installation program starts, as shown below:



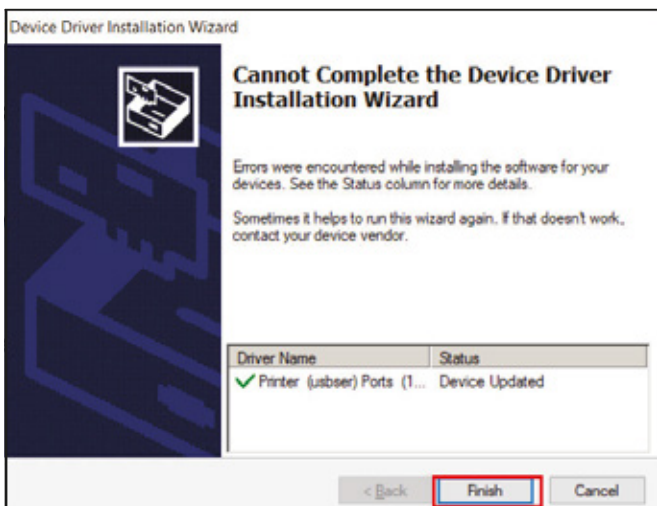
3. If the dialog box pops up during the installation, please select “Install this driver software anyway” and go on installation, as shown below:



4. The driver is installing



5. Click “Finish”, the installation of the driver is complete, the COM port pops up automatically in the port of device manager. As you use port, please select auto-generated COM port.

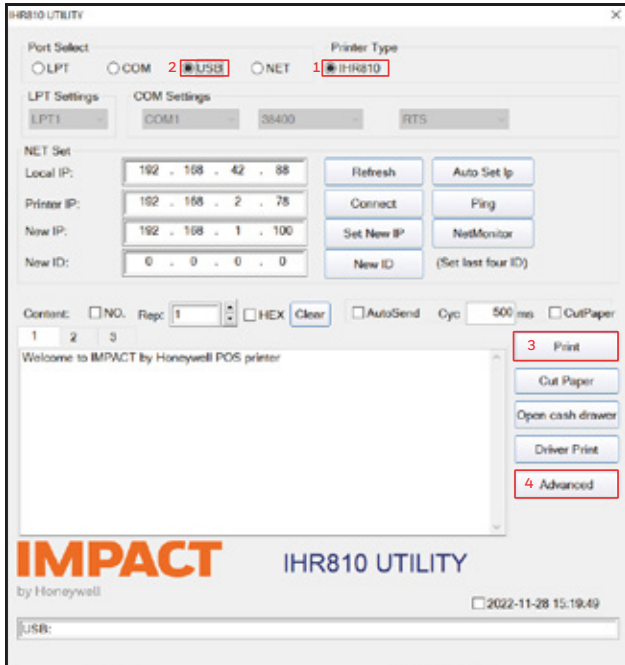


Prompts: If the installation failed, firstly copy “usbser.sys” file in Favorites of the Virtual COM driver of ST to Disk C of the computer, and install it once more. The specific operation sees the installation method for NXP chip above mentioned:

Chapter 8

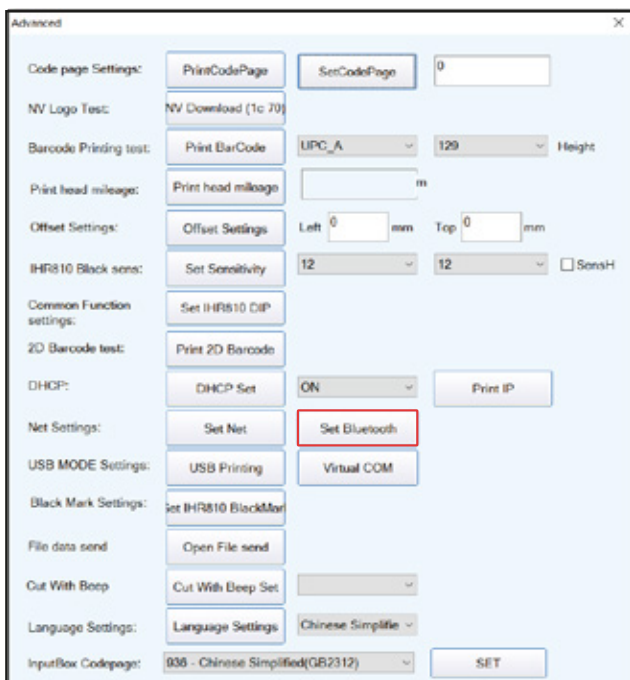
Settings of the Bluetooth Printer using utility.

1. Open the “Impact IHR810 Utility” follow the below step.

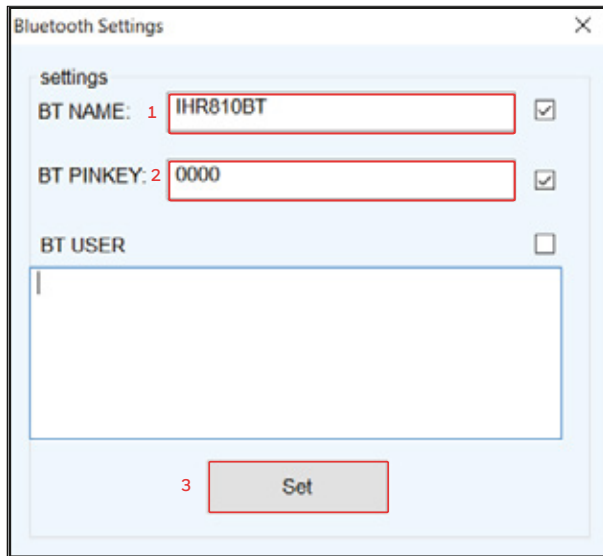


- (1) Choose Printer Type: “IHR810”.
- (2) Choose “USB” Port.
- (3) Click the “Print” to test whether the printer is working.
- (4) After doing the above settings, the printer is tested to be working. Then click the “Advanced”, and the corresponding window could be popped up.

2. Click the “Advanced”. Then the corresponding window is popped up. See the picture:



3. Click the “Bluetooth Set”, and follow the steps to set up the Bluetooth information. See the following pictures:

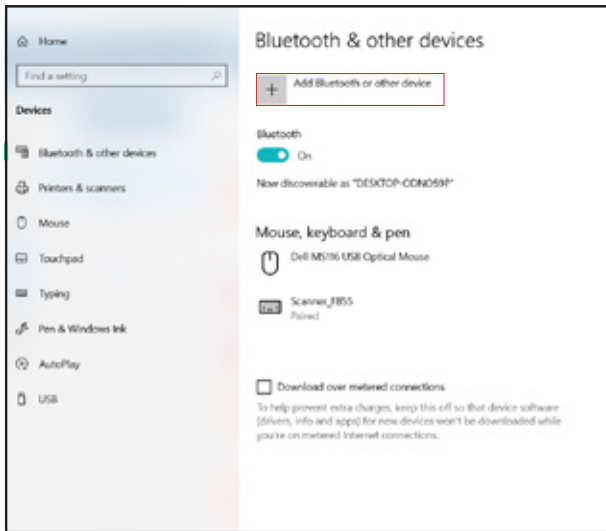


- (1) Set up the Port name of the Bluetooth Printer (The Factory Default BT NAME is “IHR810BT”)
- (2) Set up the Password of the Bluetooth Printer (The Factory Default BT PINKEY is “0000”)
- (3) After doing the above settings, click “Setting”, and then finished the settings of Bluetooth printer Parameters.

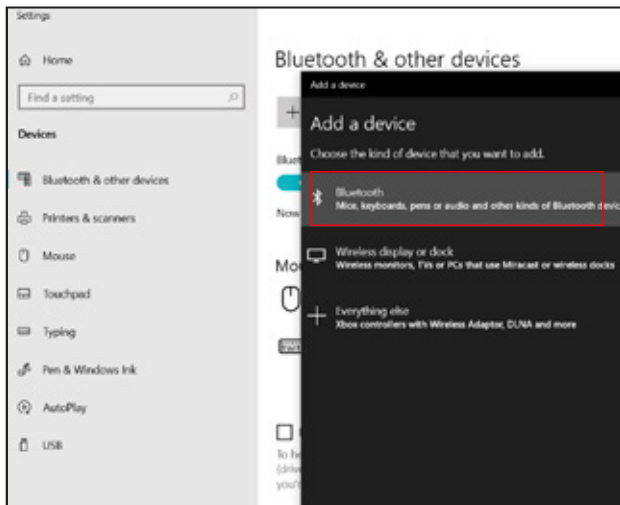
Chapter 9

Bluetooth Printer installation.

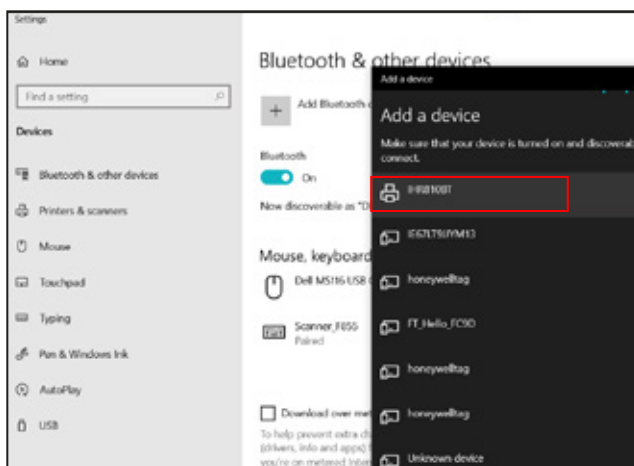
1. Open the Bluetooth devices option and click the add bluetooth or other device option.



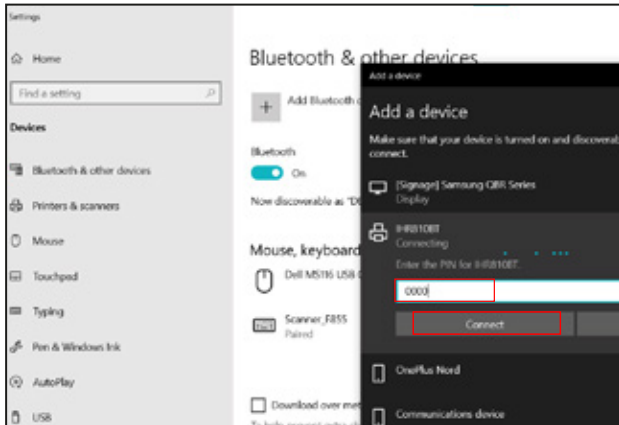
2. Click on bluetooth option and search bluetooth name "IHR810BT".



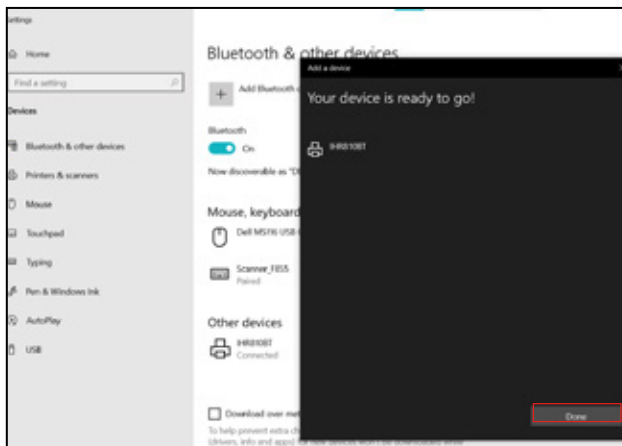
3. Please select "IHR810BT" bluetooth name.



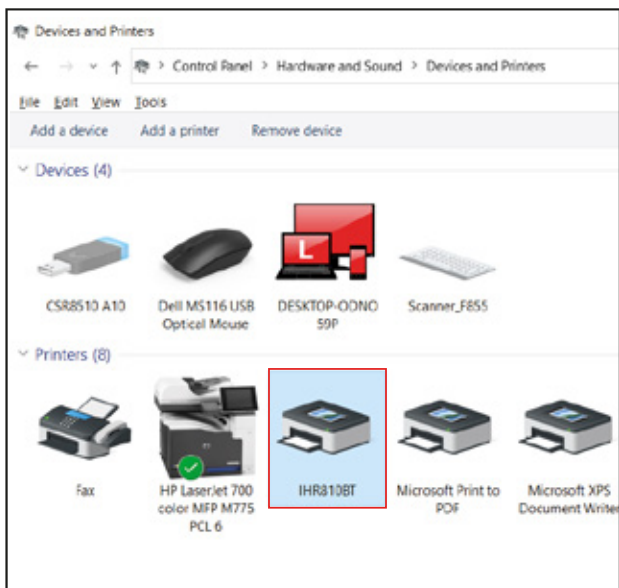
4. Click the “IHR810BT”, and write the password (0000). See the following pictures.



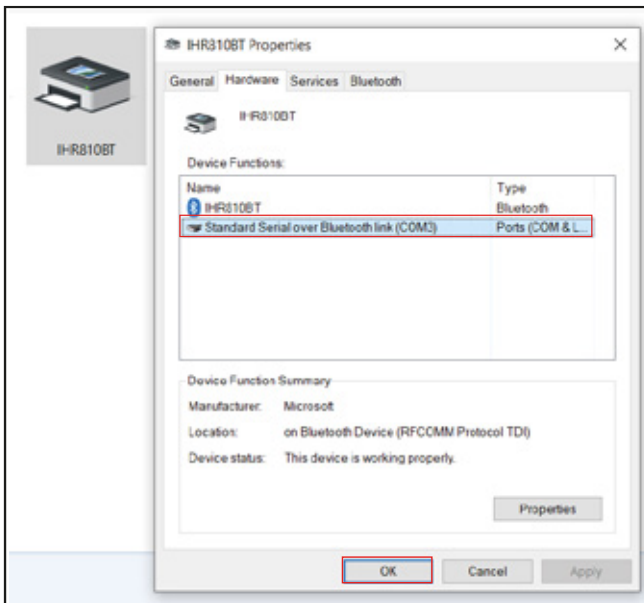
5. Click on the done option and now your printer is connected with the system.



6. You are able to see the connected printer in the Device and printer setting with the name “IHR810BT” as per the below picture.

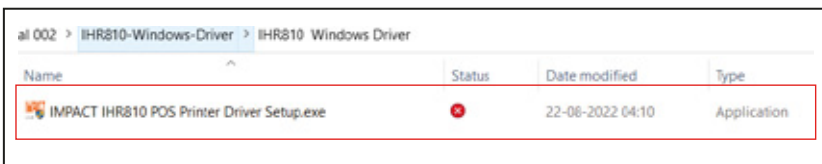


7. Right-click the IHR810BT printer and go to the properties. Then Select Hardware option and check which COM port is selected by the printer. as per the below picture.

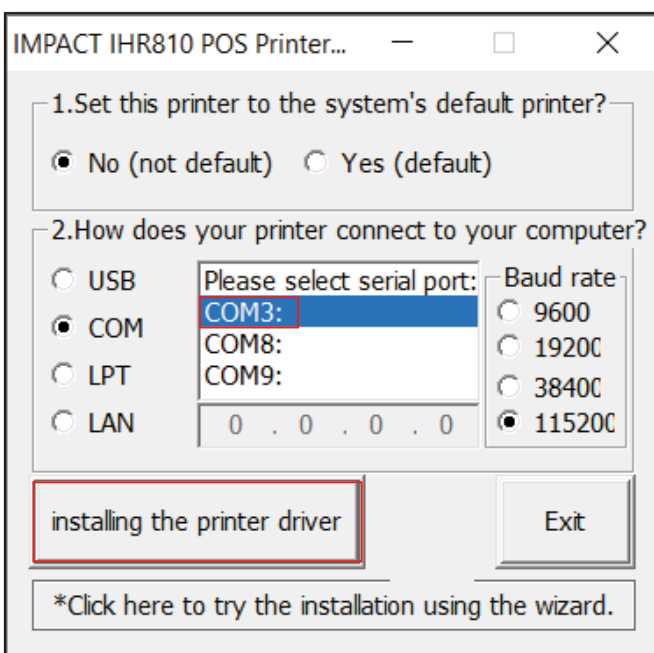


8. To Download IHR810 Printer Windows Driver [Click Here](#).

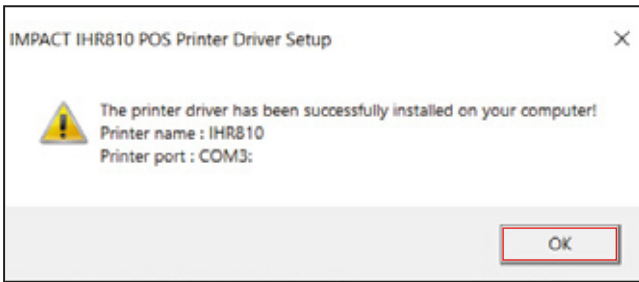
Run the IHR810 printer windows driver setup. Check the below picture for your reference.



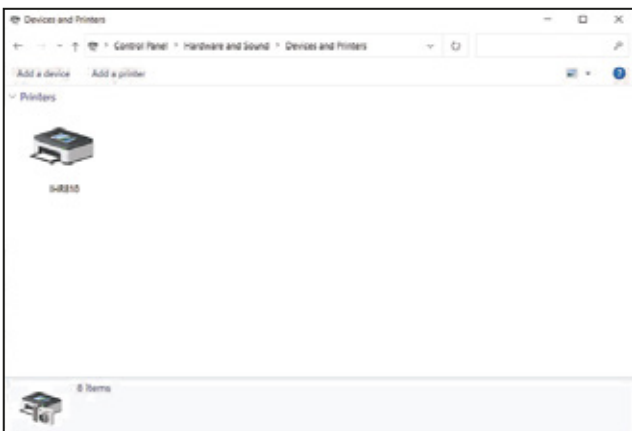
9. Select the COM interface and COM port that you earlier got in point no. 7 (Ex- COM3) and select baud rate "115200". Then click on installing the printer driver" as per below image.



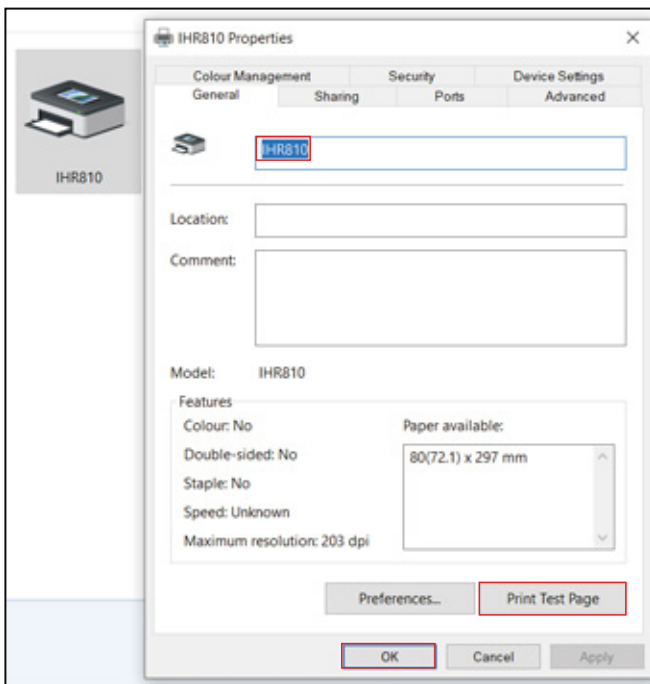
10. After successful installation you will see this pop-up on your screen click OK



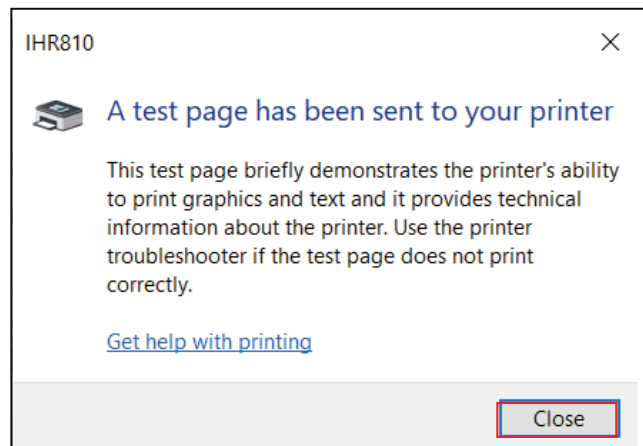
11. You should now see the driver in the device and printer section of your windows settings.



12. Right-click the IHR810 printer go to the printer properties and select general option then click on the print test page as per the below picture.



13. You will get the below message.



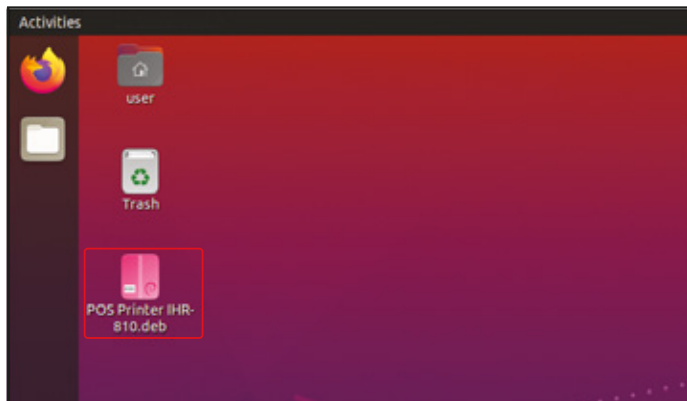
14. You will be receive this print after successfully installing the driver.



Chapter 10

Linux Driver Installation Instruction.

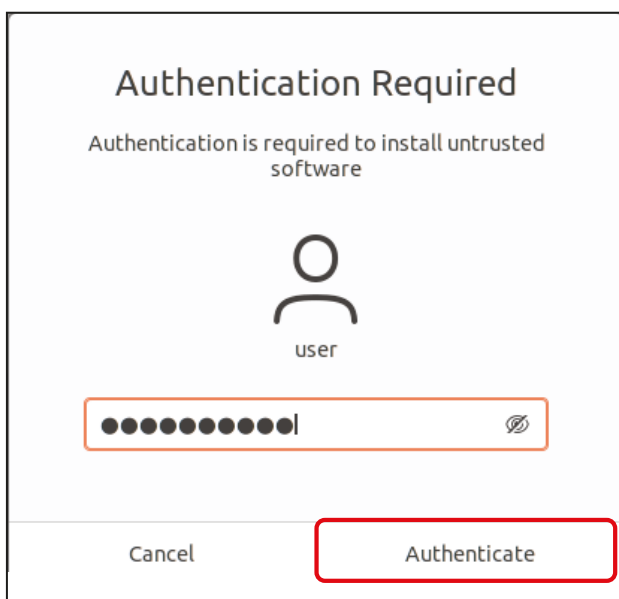
1. Click & open "POS Printer IHR810.deb" package, as shown in below picture
(To Download IHR810 Printer Linux Driver [Click Here.](#))



2. Now click on install



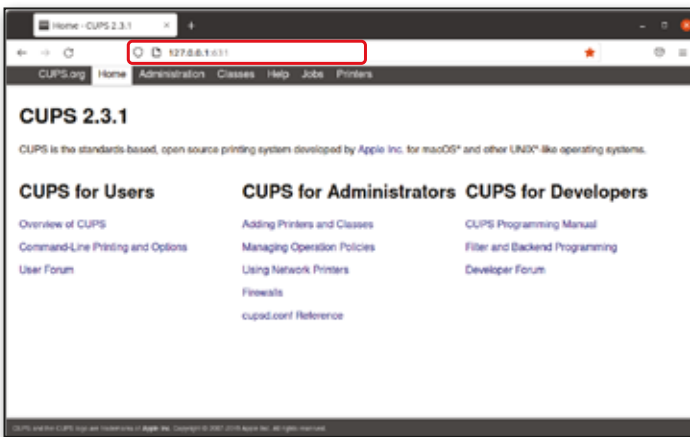
3. Installation process might require your authentication



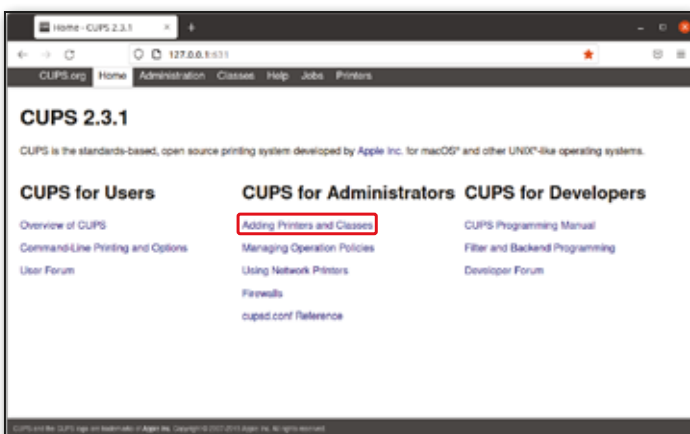
4. This window will appear after successful installation.



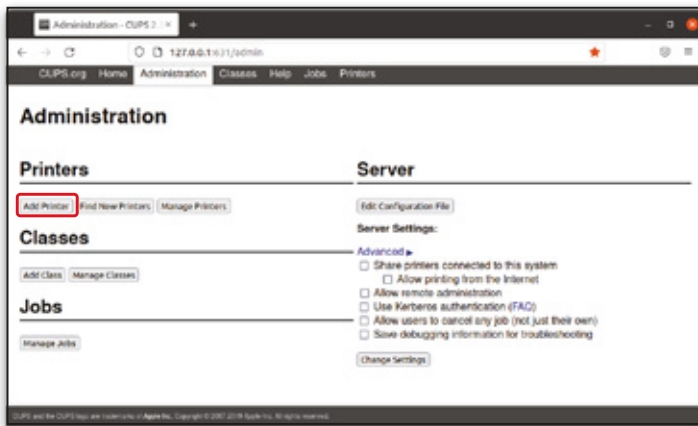
5. Search for this URL <http://127.0.0.1:631> to add printer in your system.



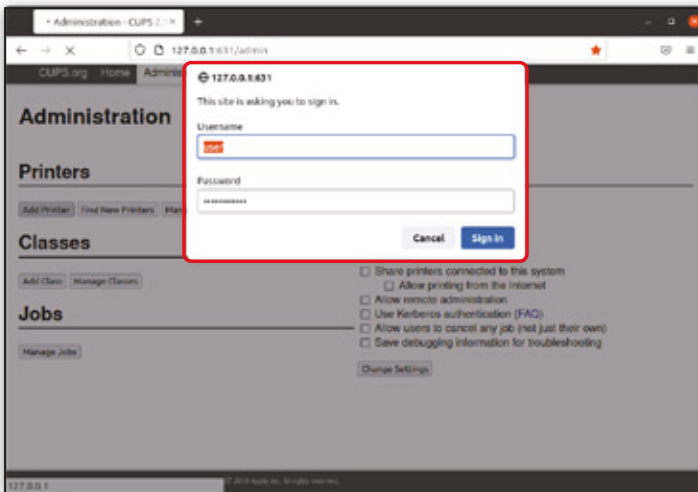
6. In 'Home' tab select "Adding Printers and Classes" option as shown in below image



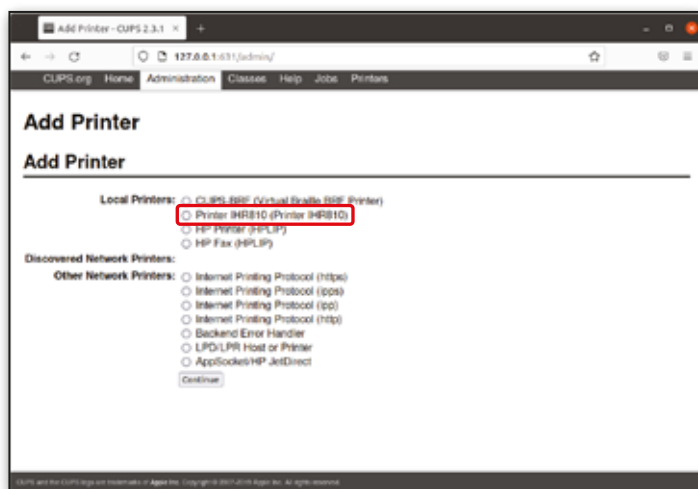
7. After click administration, Now click on add printer option as show in the figure below.



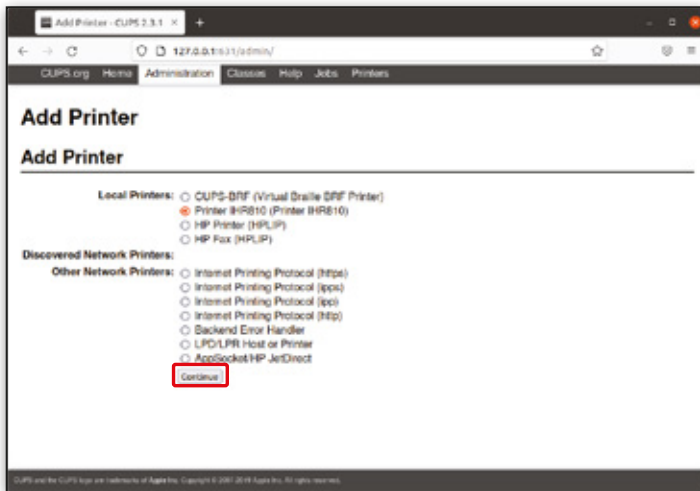
8. Enter your admin details user name and password to proceed next.



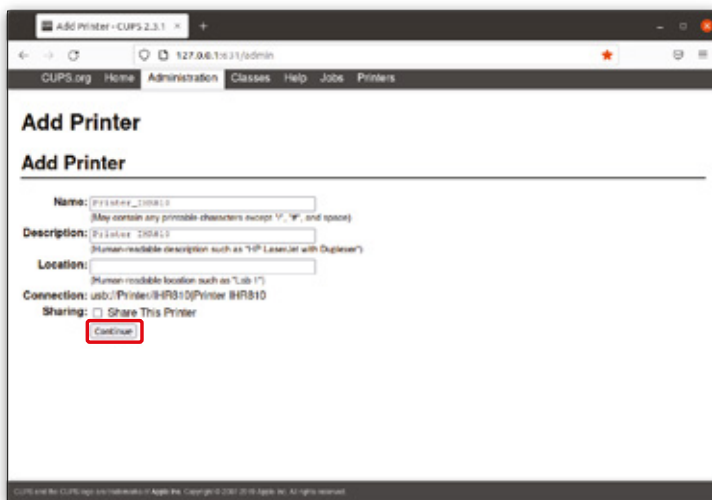
9. Now in local printers select Printer IHR810.



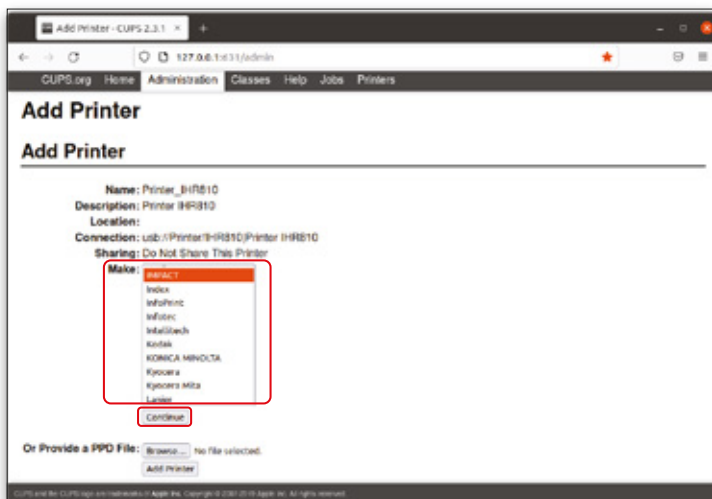
10. Click on continue figure show as below.



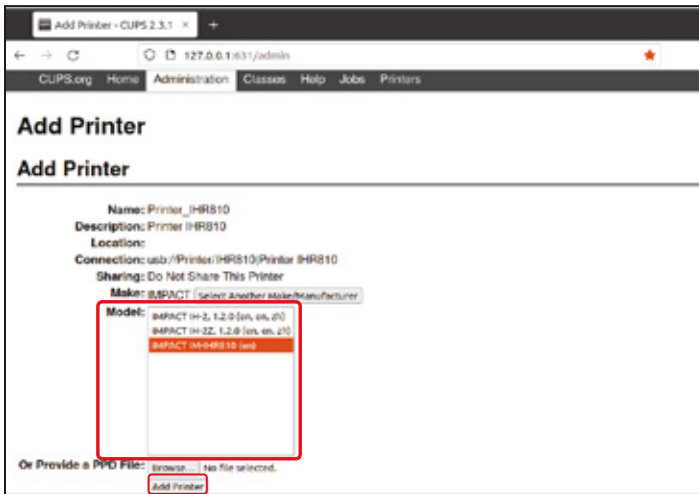
11. Click on continue figure show as below.



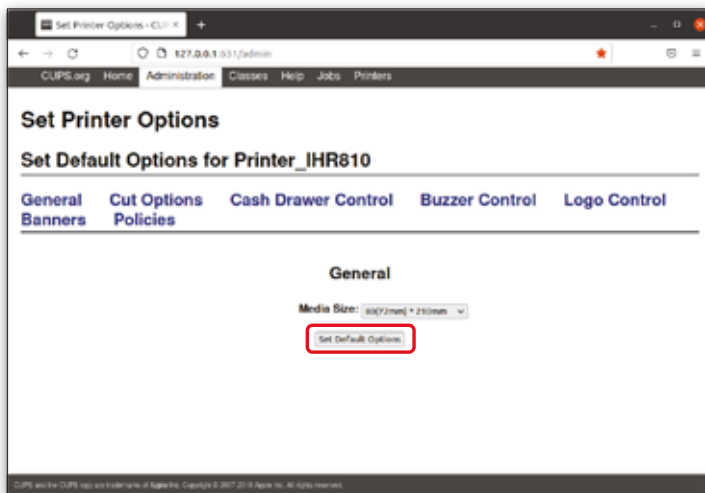
12. In the below interface, see the “Make” box, inside should select “IMPACT”, and click “continue”.



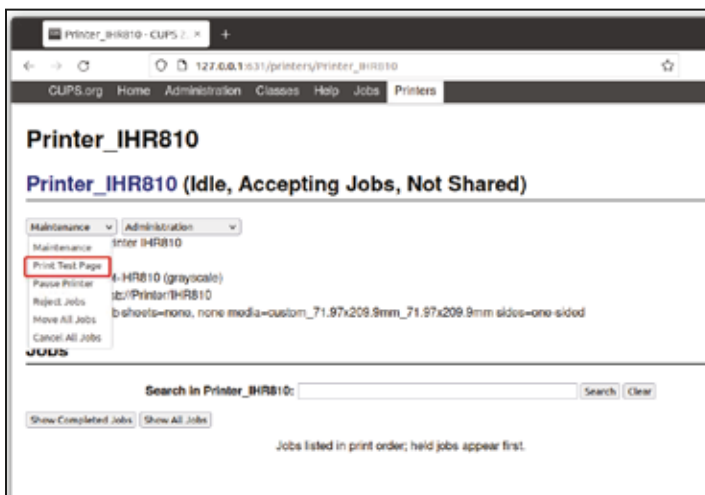
13. In the new interface, select "IMPACT IM- IHR810(en)", then click "Add printer", figures show as below.



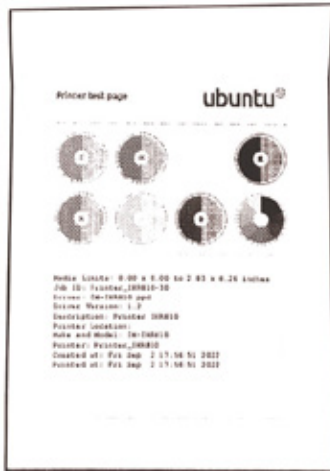
14. Then will into set printer option interface. Below you can set printer function as you required, after set, you can make set "Default" options.



15. Click on "Maintenance", figure show as below and in maintenance list you can click "Print test page".



16. You will receive this print after successfully installing the driver.



Chapter 11

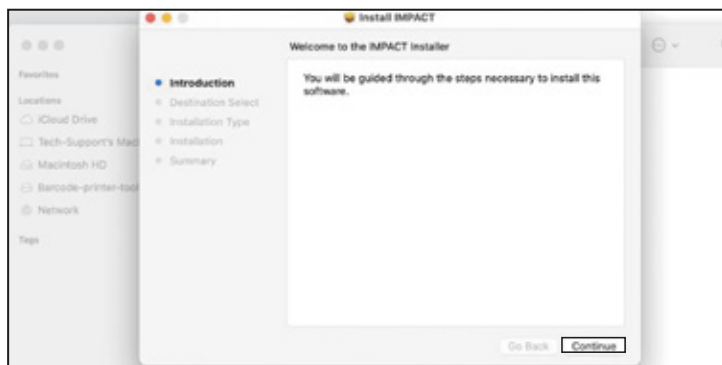
MAC Driver Installation Instruction.

To Download IHR810 Printer MAC Driver [Click Here](#).

1. Double click on "POS Printer IHR810.pkg." to open it.



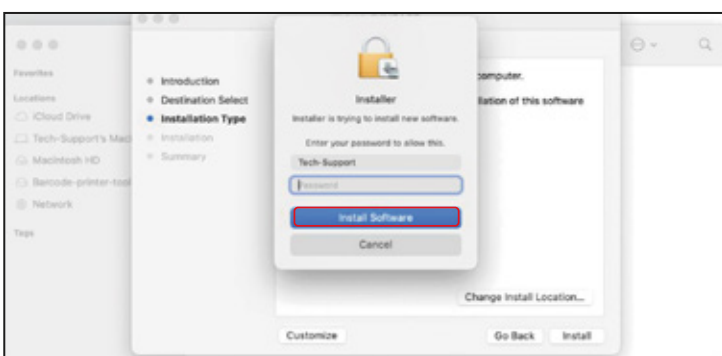
2. After entering this screen, click continue.



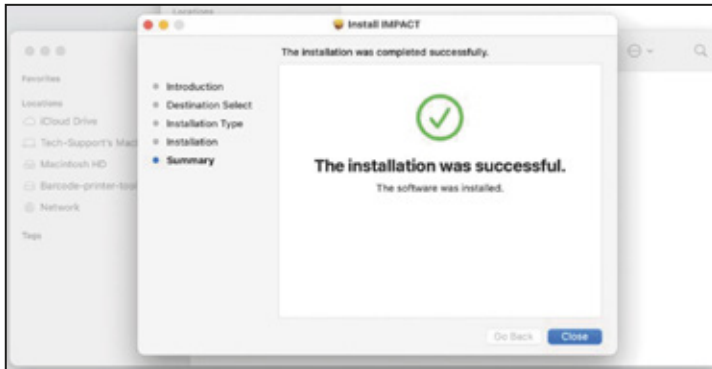
3. Click on Install.



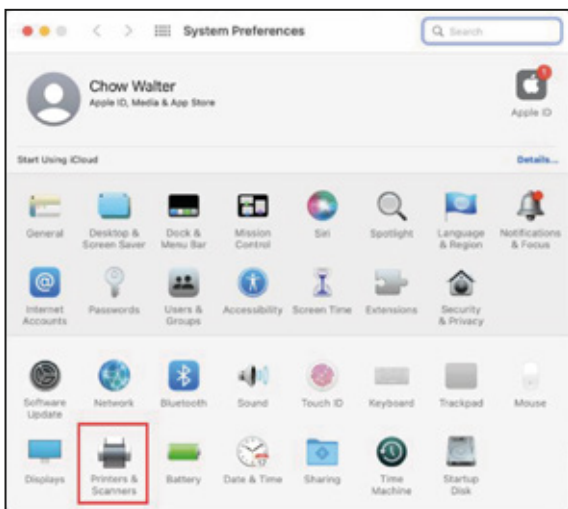
4. Enter Password and click install software.



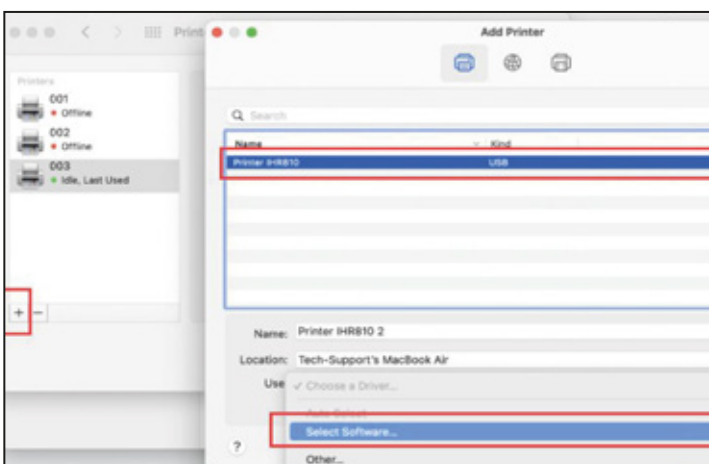
5. Finish install



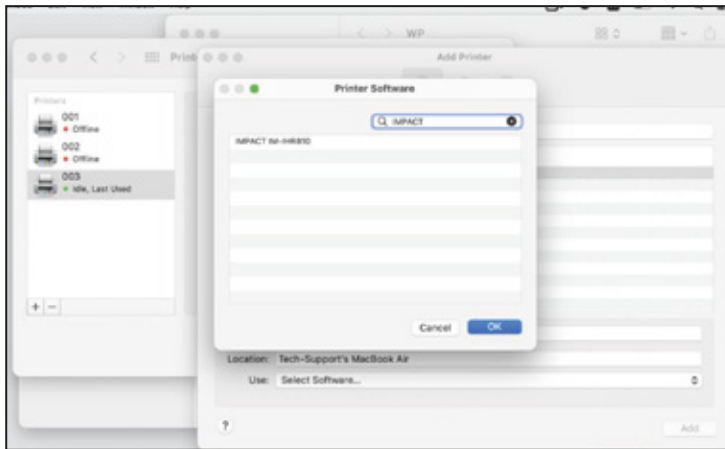
6. Open system preferences > Open printers & scanners.



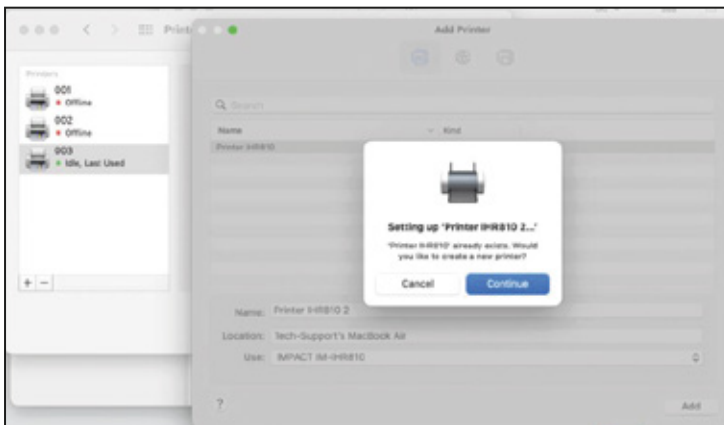
7. Click the plus sign to add the printer, click the printer, Select Software



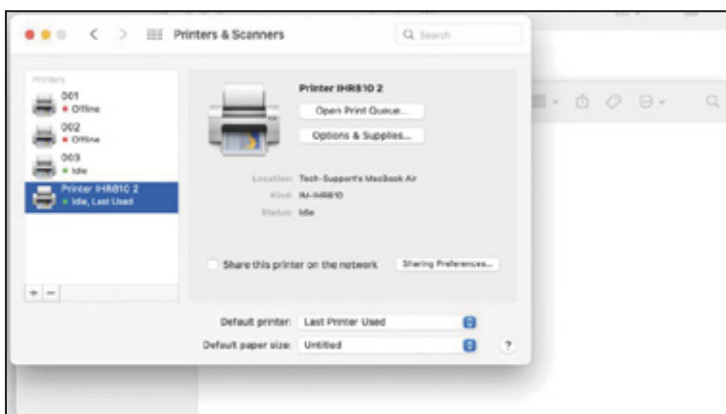
8. Search the "IMPACT", select IMPACT IM-IHR810 and click OK



9. Click Continue.



10. This completes the installation successfully.

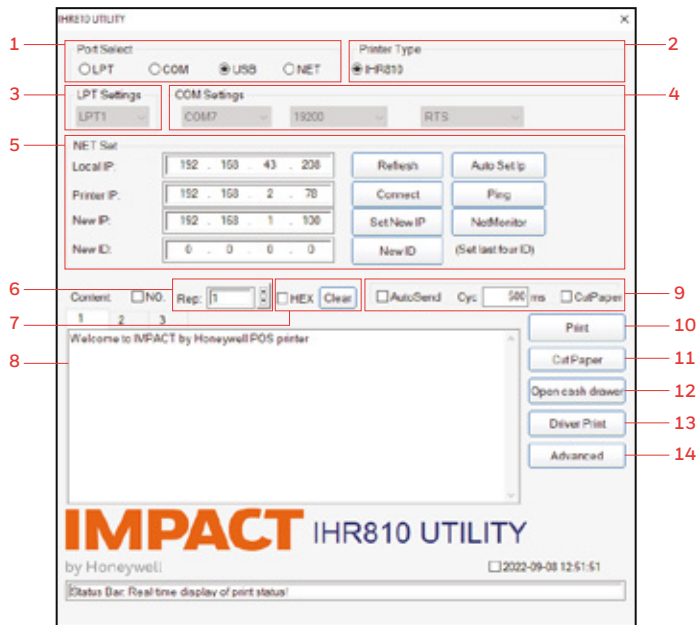


Chapter 12

IMPACT IHR810 Utility Tools Instruction.

To Download IMPACT IHR810 Utility [Click Here](#).

1. Introduction of Main Interface:



1. Communication port selection:

Four options of printer communication interface: parallel port, serial port, USB port and Ethernet port.

2. Printer type :

Printer type: IHR 810.

3. Parallel port Settings (LPT Set):

Parallel port Settings---- be consistent with the computer communication parallel port number.

4. Serial port Settings (COM Set):

Serial port Settings----- set the serial port number, baud rate, flow control, etc.

5. Ethernet port Settings (NET Set):

Change the IP address of Ethernet port printer through Ethernet port Settings.

“Local IP”--- computer’s real IP address which can be added manually or by Clicking "refresh" button.

“Printer IP”---printer’s current IP address , its detailed information can be seen on self- test page.

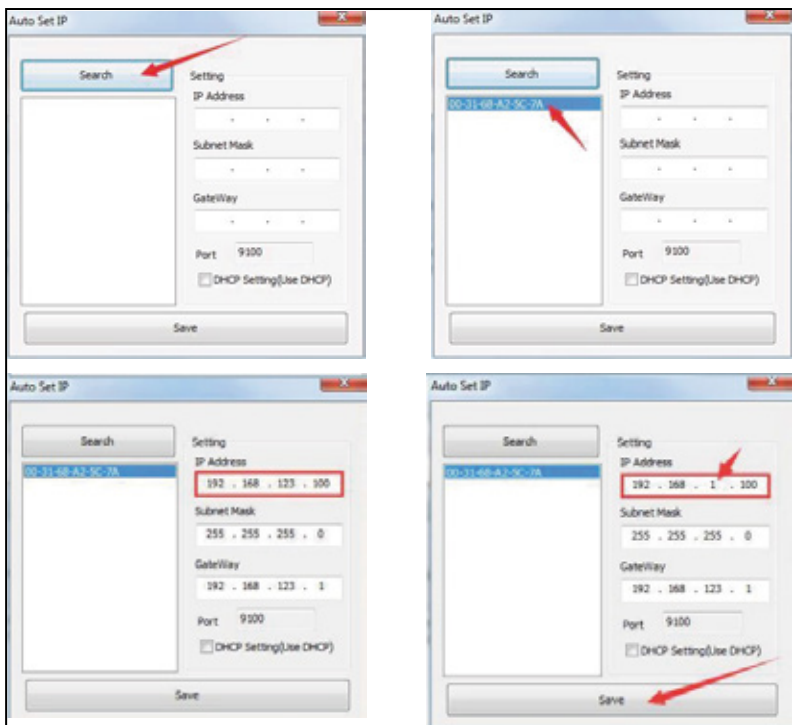
“New IP address”--- the new IP address the printer’s IP address is to be changed to (printer’s IP address shall be in the same network segment as the connected computer’s to realize intercommunication).

“New ID address”--- the new ID address the printer’s ID address is to be changed to (Printer’s ID address must be an only address within a network). Ethernet port settings are operated by means of HUB and SWITCH, in case that the settings can’t be changed by ROUTER, other means can be used.

“Auto Set IP” Used to search printers in the same LAN. The method of modifying the printer IP address across network segments is as follows:

(1) Click the "Automatically Set IP" button to enter the setting interface.

(2) Click the "Find" function in the setting interface, and the MAC address of the connected printer will be displayed. Double-click the MAC address of the printer to display the current IP address of the printer and other information. After modifying the IP address, click the "Save" button. The printer buzzer will beep, indicating that the printer IP address has been modified.



“Net Monitor”----Monitor printer status through network. (net port available)

6. Number of the copies:

It refers to the printing quantity of the repeat print of the test content.

7. HEX:

Data can only be transmitted by inputting hexadecimal after having selected printing content. (It's mainly used to send instructions to the printer).

8. Printing content:

Edit the printing content here, and send data by clicking "Print" button.

9. Automatically sending, cycle, paper cutting:

“Automatically sending”----- Click the "Auto Send" button and the software will automatically send the data in the printing content column to the printer. “Cycle”----- cycle time to send data automatically “Paper cutting”----- Printer will automatically do paper cutting work according to the cycle time after the “Auto Send ” button and “cyc” button have been set.

10. Print:

Print the information and data in the “content”edit box.

11. Paper cutting:

Test the function of paper cutting action.

12. Open cash drawer:

Test the cashbox function.

13. Driver print:

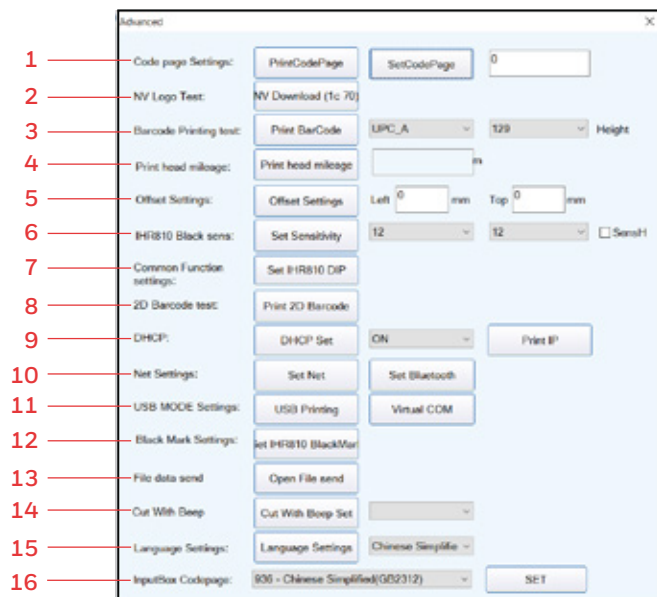
Call the installed Windows driver to test print, printing out the information suggests successful installation.

14. Advanced:

Click "advanced" button, and set up more features to have print test, below is the detailed introduction.

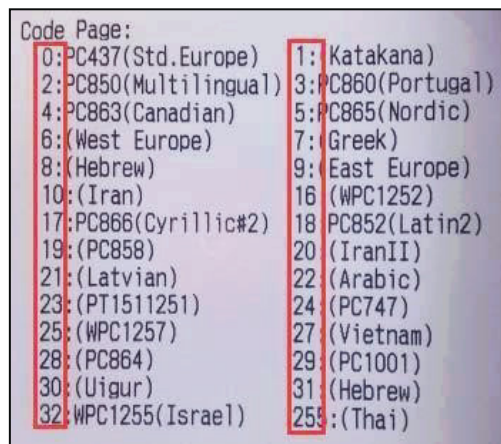
2. Setup instructions for advanced setting:

Click the "advanced" button on the main interface, the following interface will pop up:



1. Set Code page:

It's for changing the default printer code page. Following is part of the code pages of the IHR810 printer.



Input the desired parameter value in "Set code page", and then complete the setting by clicking "set code page" button. Click "print code page" button to view the setup code.

2. NV logo demo:

1. Size requirement and function selection of paper cutting of NV LOGO printing.
2. Open LOGO:
 - Click and select BMP format picture or the LOGO file that you want to print.
3. Download NV LOGO:
 - Click the download button after opening the BMP format file and the file will be downloaded to the printer. Print the file content by clicking " print LOGO" button.
4. Print LOGO:
 - Click this button to complete the LOGO image printing.
5. Clear LOGO:
 - Remove the downloaded NV LOGO.
6. Mult NV LOGO down.
7. Show current NV LOGO.

3. Barcode printing test:

Choose a variety of barcode types and height to test the print with a total of nine kinds of one-dimensional code choice.

4. Print head mileage:

If click this print head mileage option, will show the print head mileage until now.

5. Offset settings:

If set left value, it will move horizontally, if set top value will move vertical direction.

6. IHR810 Black mark sensitivity Settings:

The adjustment of black mark sensitivity Settings for IHR810 Printer according to different black mark paper. Valid only when black mark function set is on.

7. Common function Settings:

IHR810 DIP Settings

Select cutter
 YES NO

Select beeper
 YES NO

Print density
 Set(1-8) default

Chinese mode
 YES NO

Character per line(FontA/B)
 48/64 42/56

Cutter with drawer
 NO YES

Serial baudrate
115200

Set

8. 2D barcode testing:

Two-dimensional barcode test

Error correction level
7%

ecc800/dens
7

Welcome to IMPACT by Honeywell POS printer

Back Cut Clear Generate Send Data

Edit and print test of two-dimension codes

9. DHCP Set:

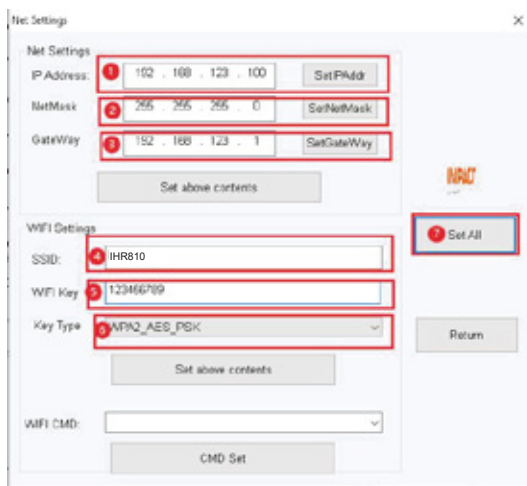
The "DHCP set" function is used to automatically turn on and off IP addresses.

1. Enable DHCP
select "ON" option and click on "DHCP Set."
2. Disable DHCP
select "OFF" option and click on "DHCP Set."



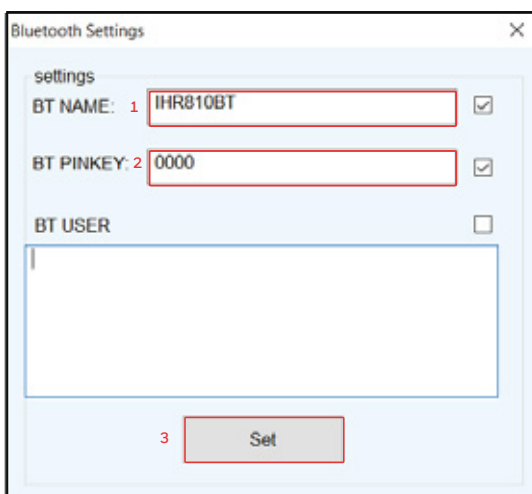
10. Network Settings:

It includes "Network Settings" and "Bluetooth Settings"



(Network Settings).

1. Set up the Printer's IP address.
2. Set up the Subnet Mask.
3. Set up the Gateway.
4. WIFI SSID address settings. Note: the SSID address is the name of your Wireless Router's name. For example, if the address of the current Router (SSID) is: IHR810, then this SSID address should be typed in the tab of "SSID".
5. WIFI password settings. Note: the password of the Wireless Router For example, if the WIFI's current password is:123456789, then this password should be typed in the tab of "WIFI password".
6. Encryption type of WIFI SSID settings. Note: the encryption type of the Wireless Router. For example, if the encryption type of the Router (SSID) is: WPA_TKIP_AES_PSK, then this information should be selected in the tab of "SSID Encryption type".
7. After filling the above information, click the "Setting All" option. The printer will "BEEP". Next, restart the printer.



(Bluetooth Settings).

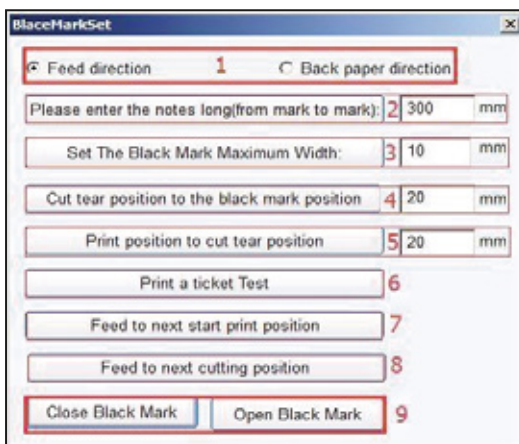
1. Set up the Port name of the Bluetooth Printer.
(The Factory Default BT NAME is "IHR810BT")
2. Set up the Password of the Bluetooth Printer.
(The Factory Default BT PINKEY is "0000")
3. After finishing the above settings, click "Setting", and then finished the settings of Bluetooth printer Parameters.

11. USB Mode Setting:

Mode Setting of printer's USB port includes Usb Printing and Virtual Com. USB mode switches according to customer demand.

12. Black mark Settings:

To set special paper printing with black mark.



1. Offset in paper-feed direction, offset in paper unwinding direction.
To set the direction of data calculation for paper cutting position, the default value is feed direction.
2. "Please enter the black mark spacing (mark length)" To calculate the center distance of two black marks.
3. "Set the black mark Maximum width".
It's a value to calculate the actual height of a black mark.
4. "The offset of paper cutting position relative to the black mark position".
It's to calculate the actual distance from the paper detector in the print head to the paper cutter.
5. "Distance between the print starting position and paper cutting position".
It's to calculate the distance from the print starting position to paper cutting position.
6. "Print a ticket test".
Click this button and a note will be printed out. If it's properly set, paper will automatically go a length of black mark and then be cut.
7. "Feed to next print position".
Click this button and paper will go to the next print starting position for a black marker. Print out the information to test the right position.
8. "Feed to the next cutting position".
Click this button and paper will go to the next paper cutting position and paper will be cut to test the accuracy of paper cutting position.
9. Turn on the black mark, turn off the black mark.
Black mark function is off by default. Turn on black mark function to make related Settings. In case black mark position is detected incorrect, please reset referring to 7 "IHR810 black mark sensitivity" of "advanced".

13. Send file data

Click button, choose and open TXT format file in the pop-up dialog box, and then the printer will print the contents of the file.

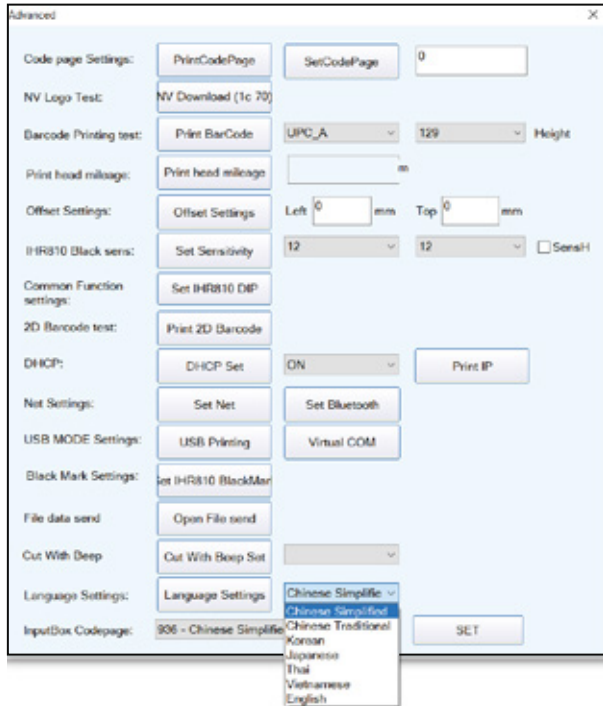
14. Cut With Beep

The alarm function can be set to turn on or off after cutting paper with cutter.

15. Language settings

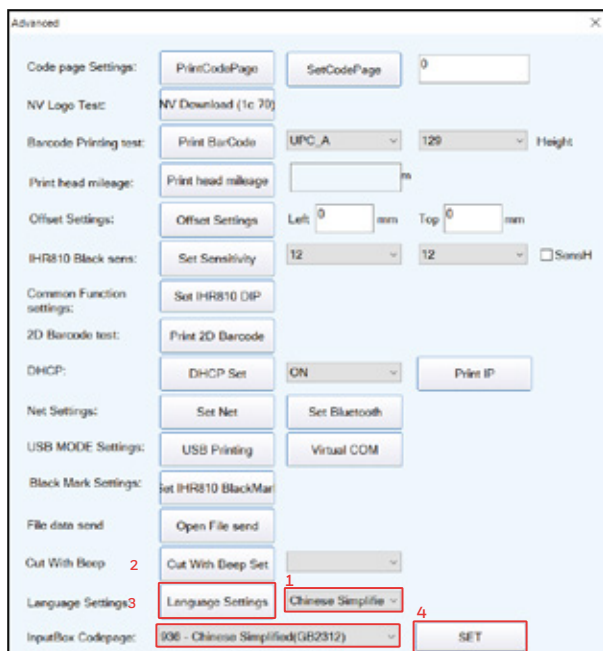
You can able to set the languages setting option utility.

- Chinese Simplified
- Chinese Traditional
- Korean
- Japanese
- Thai
- Vietnamese



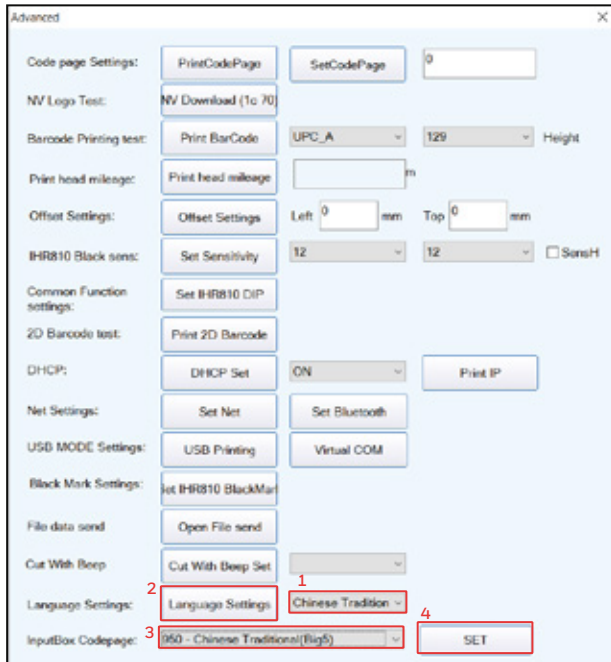
1. Select Chinese Simplified language settings

- Open utility
- Go to advance settings
- In the language settings select Chinese Simplified & press language settings button
- Set input code page to Chinese Simplified (936) & press set button
- Print any receipt which is in Chinese Simplified language



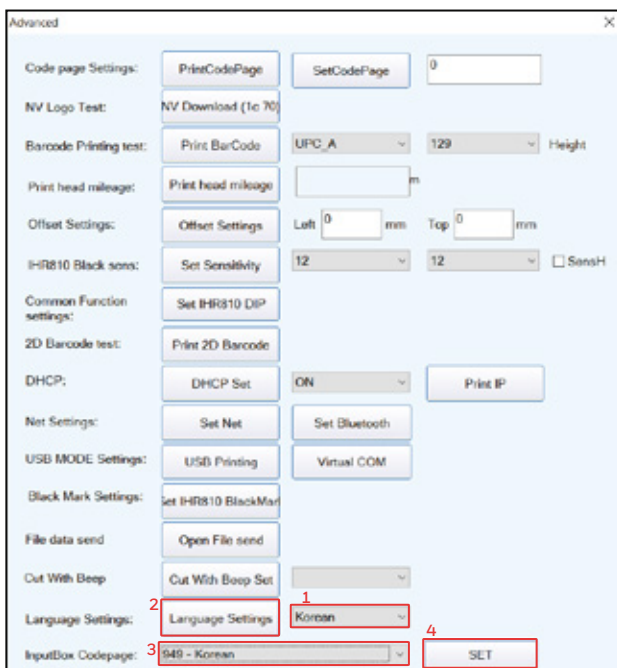
2. Select Chinese Traditional language settings

- Open utility
- Go to advance settings
- In the language settings select Chinese Traditional & press language settings button
- Set input code page to Chinese Traditional (950) & press set button
- Print any receipt which is in Chinese Traditional language



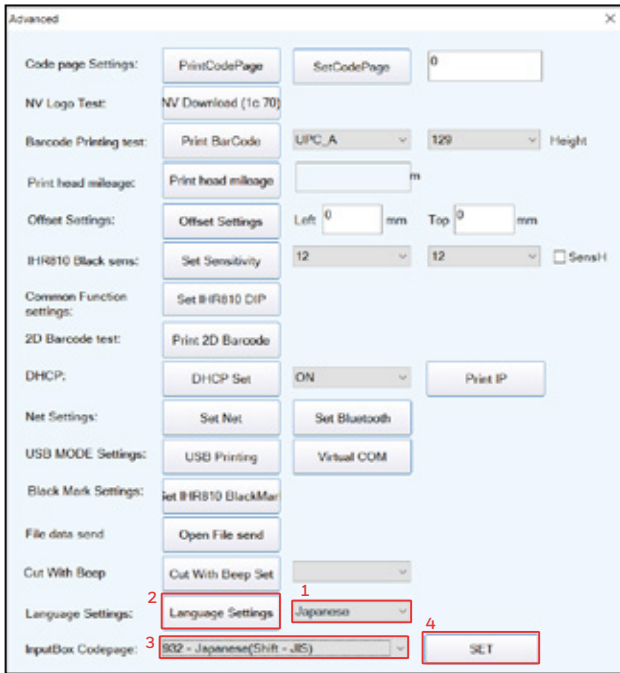
3. Select Korean language settings

- Open utility
- Go to advance settings
- In the language settings select Korean & press language settings button
- Set input code page to Korean (949) & press set button
- Print any receipt which is in Korean language



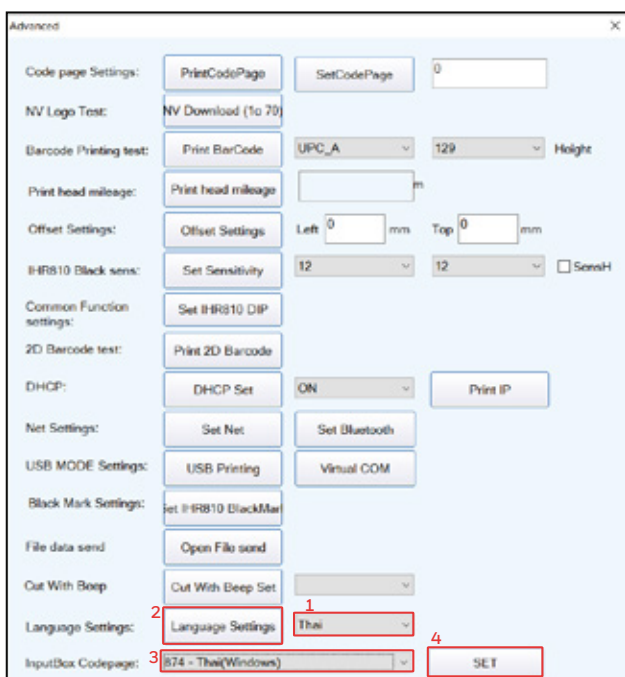
4. Select Japanese language settings

- Open utility
- Go to advance settings
- In the language settings select Japanese & press language settings button
- Set input code page to Japanese (932) & press set button
- Print any receipt which is in Japanese language



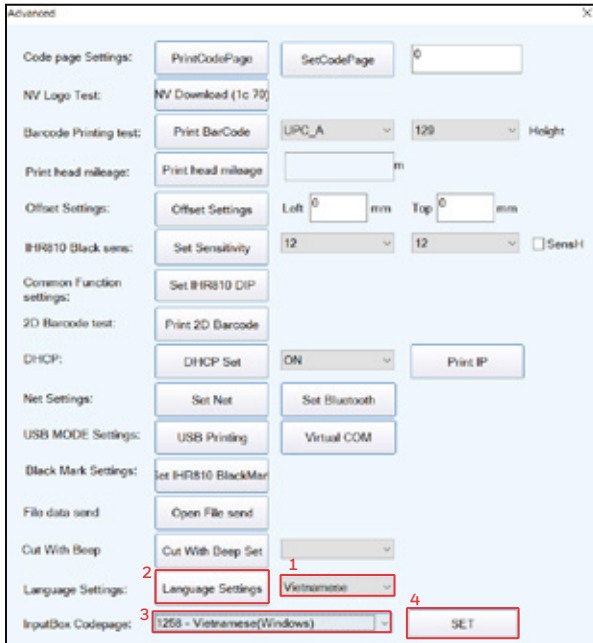
5. Select Thai language settings

- Open utility
- Go to advance settings
- In the language settings select Thai & press language settings button
- Set input code page to Thai (874) & press set button
- Print any receipt which is in Thai language



6. Select Vietnamese language settings

- Open utility
- Go to advance settings
- In the language settings select Vietnamese & press language settings button
- Set input code page to Vietnamese (1258) & press set button
- Print any receipt which is in Vietnamese language



16. Input BOX Code Page

Words responsible for decoding text boxes.

For more information,
please contact your local Honeywell representative,
or write to impact.sps@honeywell.com

Honeywell International India Pvt. Ltd.

1120-21, 11th Floor, Tower A, DLF
Tower, Jasola, Jasola District Centre
New Delhi - 110025, India
<https://impactbyhoneywell.com>