

SARMASTER 600

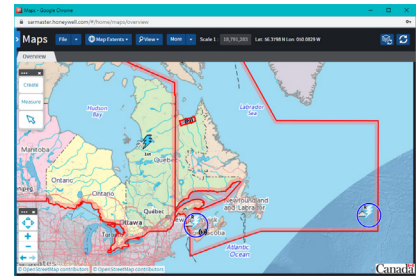
Search & Rescue Incident Management System

SARMaster 600 is an advanced search and rescue (SAR) incident management system offering extensive SAR planning tools used to coordinate all SAR efforts in a single control center view. SARMaster 600 provides rescue coordination centers (RCCs) around the world with a complete view of SAR data, including emergency beacon locations and information about local SAR resources (e.g., vessels, helicopters and personnel).

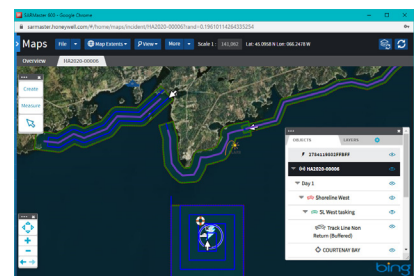
A browser-accessible web-based application hosted securely on your own, or Honeywell managed, servers, SARMaster 600 incorporates multiple databases such as GIS, incident information, SAR resources, ship and aircraft registries, all in one view. It provides a powerful automated method for what were manual, time-consuming tasks of gathering case information: incident logging, data entry, registration database lookup, rescue resources lookup, checklists, mapping and reporting. SARMaster displays both spatial and text-based data on up to four monitors per workstation.

SARMaster has consistently proven its effectiveness for civil and military operations, deployed in 15+ countries, including the largest COSPAS-SARSAT adopters and other SAR agencies around the world. Honeywell's end-to-end SAR offerings including satellite ground stations, mission control centers (MCCs) and RCCs, have played a key role in the expansion of the worldwide SAR network and are currently used by the majority of countries that participate in the COSPAS-SARSAT program. Honeywell state-of-the-art SAR equipment and software have been used for decades in operations that have saved tens of thousands of lives.

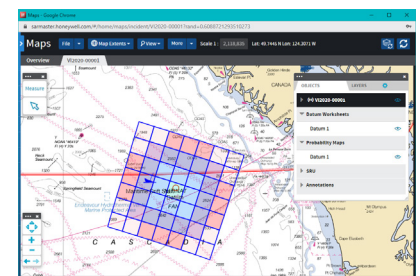
Honeywell Global Tracking is a global leader in the development of search and rescue technology, and has been a pioneer in the field for over 40 years.



Overview Map shows currently active incidents and search areas, active beacon alerts and airborne reports.



Visually Plan & Track combined search operations using interactive tools.



Get Probability Mapping for drifting object's location and optimum search area marked on any preferred air or marine chart using IAMSAR Datum worksheet.

FEATURES AND BENEFITS



Complete Visualization: Provides a holistic view of all data necessary for a cohesive and well-coordinated SAR incident response including maps, beacon locations and SAR resources



Highly Automated: Saves time and reduces errors when performing common SAR incident tasks such as logging, data entry, registration database lookup, rescue resources lookup, checklists, mapping and reporting



Standards Compliant: Fully compliant with International Aeronautical and Maritime Search and Rescue (IAMSAR) procedures



Reliability: This field-proven application from the leading SAR equipment provider in the world has helped save tens of thousands of lives worldwide

SARMASTER 600 Technical Specifications

SERVER REQUIREMENTS

(2 - 20 users; higher configuration needed for 20+ users)

Operating System: Windows Server

Processor(s): Quad-core or higher

RAM: 64 GB in standard configuration

Storage: RAID5, 3 x 1TB SSD

(total 2TB effective capacity)

WORKSTATION REQUIREMENTS

Monitors: 2 or more LCD monitors (recommended configuration)

Operating System: Windows

Processor: Intel Core 2 Duo or higher

RAM: 8 GB in standard configuration

Storage: 512 + GB hard drive

SOFTWARE AND APPLICATIONS

Database: MongoDB

GIS: GeoServer / OpenLayers

SOFTWARE ADD-ONS / CUSTOMISATION OPTIONS

Multi-site deployment (Multi-RCC Network) to support regional operations, data redundancy and failovers

Additional language (other than English)

Custom Feeds for

Weather

Vessel (AIS), Aircraft (ADS-B), Asset & Person Tracking

Non-COSPAS-SARSAT Alerts

Beacon & Resource Registries

Cold Exposure Survival Model (CESM)

Custom System Integration

STANDARDS

SARMaster supports all stages of International Aeronautical and Maritime Search and Rescue (IAMSAR) operations:

Awareness

Initial Action

Planning

Operations

Conclusion

Deployment models:

On-premise

Cloud based

SOFTWARE FEATURES

| FEATURE | |
|--|---|
| DEFAULT/CUSTOM MAPS WITH GIS LAYERS | ✓ |
| IMPORT AIR/MARINE CHARTS | ✓ |
| ONLINE AND OFFLINE MAP LAYERS | ✓ |
| INCIDENT CONTACTS | ✓ |
| DISTRESSED CRAFT DETAILS, PERSONS ON BOARD & ROUTE/FLIGHT PLAN | ✓ |
| INCIDENT LOG ENTRIES | ✓ |
| FILE ATTACHMENTS | ✓ |
| SOP CHECKLISTS | ✓ |
| AUDIT TRAIL SUPPORT | ✓ |
| WEATHER REPORTS | ✓ |
| WEATHER DATA FEEDS | ✓ |
| COSPAS-SARSAT BEACONS, AIRBORNE REPORTS & SIGHTINGS | ✓ |
| LOCAL SAR RESOURCES/ASSETS DIRECTORY | ✓ |
| LOCAL BEACON, AIRCRAFT & SHIP REGISTRIES | ✓ |
| GAZETTEER, NAVAIDS | ✓ |
| SEARCH PLANNING | ✓ |
| IAMSAR DRIFT MODELING (DATUM WORKSHEET WIZARD) | ✓ |
| UNASSIGNED LOG ENTRIES | ✓ |
| DATA RETENTION AND ARCHIVING | ✓ |

For more information

www.sps.honeywell.com

Honeywell Global Tracking

400 Maple Grove Road

Ottawa, Ontario K2V 1B8

Canada

E-Mail: sp_smeta@Honeywell.com

SARMASTER-600-DS | Rev 01| 04/21
© 2021 Honeywell International Inc.

THE
FUTURE
IS
WHAT
WE
MAKE IT

Honeywell