



RT, M

XTRATUF[®]

SPRING 2018



XTRATUF®

SPORT FISHING 3

LEGACY 12

ELITE 18

SALMON SISTERS 20

KIDS 22

APPAREL/ACCESSORIES 24











BUILT FOR ALASKA, FIT FOR EVERYONE

We come from Alaska, where nothing is forgiven and no compromise goes unpunished. Where 50-foot seas swallow the slightest missteps. We come from a place of unreasonable demands, and impossible standards. For more than 50 years, we've exceeded them all. We've earned the respect, loyalty and trust of people who can't afford to take trust lightly, so we don't take it lightly either.

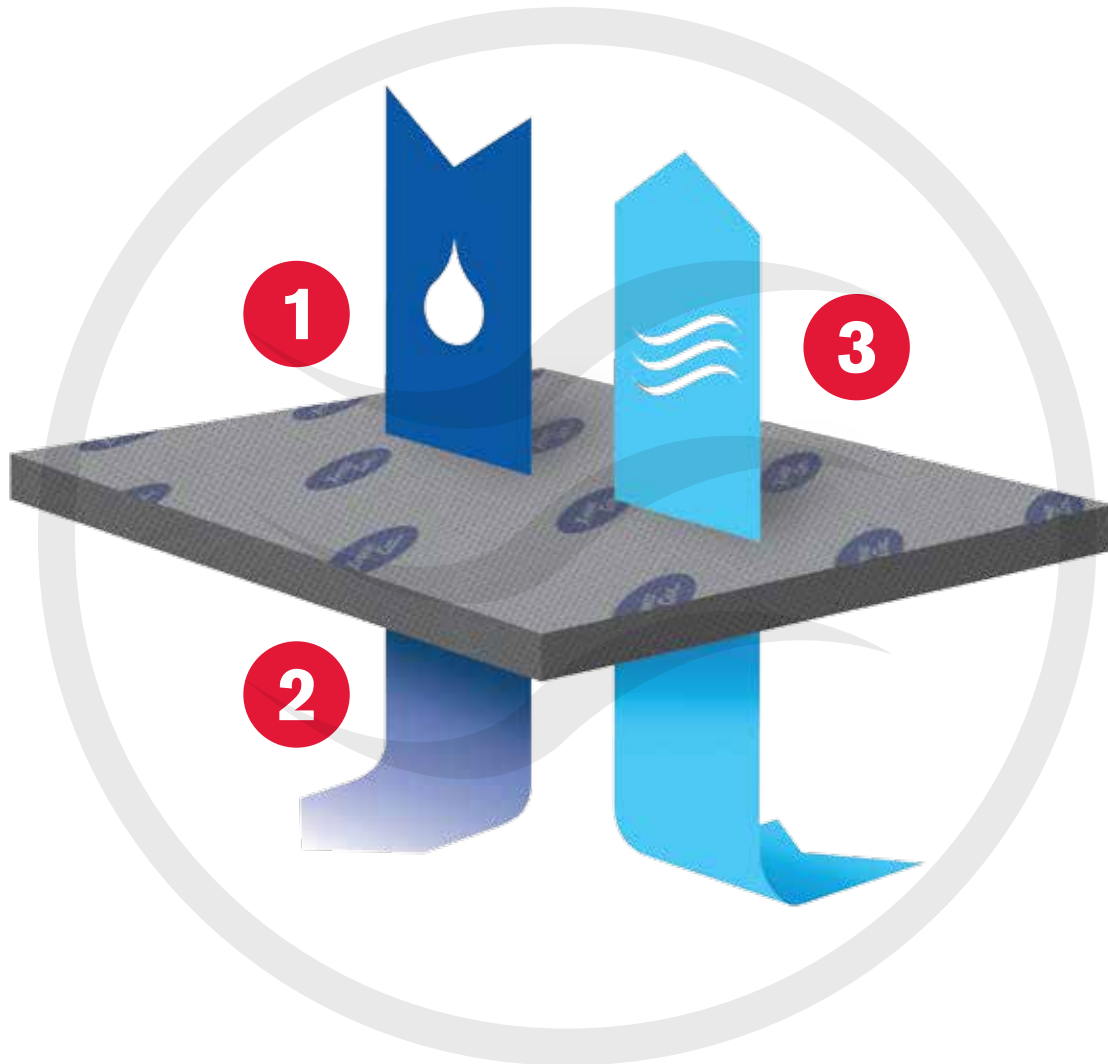
XTRATUF is part of an authentic marine lifestyle that values authenticity, performance and hard work – qualities appreciated not only by fisherman on the Bering Sea, but by commercial, sport and leisure customers everywhere. Xtratuf is excited to expand our product offering this season to include a whole new line of boots and shoes designed to support sport and leisure consumers.

You may never need a boot built to stand up to what ours do every day. But because these boots exist, you never need to settle for less than XTRATUF.

XTRATUF® TECH

	100% WATERPROOF	Boots that are built to be 100% waterproof
	OIL RESISTANT	Honeywell RDR® rubber will outwear standard rubber boots in solvents, caustics, hydrocarbons, oils, fats & acids
	XPRESSCOOL™	Anti-microbial evaporative cooling liner
	AIR MESH	A highly durable sandwich fabric which allows the foot to breathe
	ACID CHEMICAL RESISTANT	Chemical-resistant triple dipped, seamless exterior / Tested against organic and inorganic acids and chemicals
	SLIP-RESISTANT	Our slip-resistant outsoles are made from an exclusive rubber compound that grips the floor surface creating sure footing
	COMPOSITE TOE	Boots are tested to meet ASTM F2413-11 M/75 C/75
	STEEL TOE	Boots are tested to meet ASTM F2413-11 M/75 C/75
	CANADIAN STANDARDS ASSOCIATION	Boots are tested to meet CSA Z195-09
	TEMPERATURE RATINGS	

STAY DRY AND COOL FROM THE INSIDE OUT



ONE LINER. THREE FUNCTIONS.

1 WICK

As your foot sweats, the XpressCool™ lining pulls moisture away from your skin.

2 DRY

The XpressCool™ lining spreads the moisture, allowing it to evaporate much faster.

3 COOL

This creates a cooling effect—keeping your feet comfortable and dry in warm weather.

PLUS: ANTIMICROBIAL PROTECTION

XpressCool™ lining also contains antimicrobial properties, which protect against bacteria, fungus and other microorganisms.

A man is shown from the side, fishing on a boat. He is wearing a white long-sleeved shirt with a red and blue logo on the sleeve, khaki shorts, a white baseball cap, and blue rubber boots. He is holding a fishing rod and reel, and the boat is on a body of blue water under a clear sky.

SPORT FISHING COLLECTION

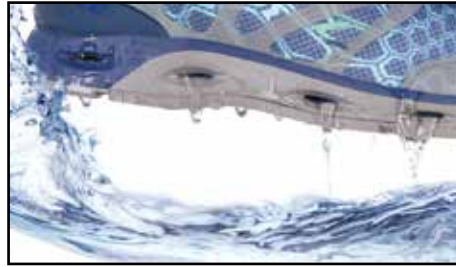


SPINDRIFT

Anglers are athletes and to perform at their best they need the proper footwear. Whether you're the wire man, poling the flats or throwing swimbaits the Spindrift provides all day comfort in an athletic silhouette. Perforated molded EVA insole paired with the drainage outsole make this shoe an anglers daydream. All XTRATUF footwear features our signature non-marking, slip-resistant Chevron outsole.



100% BREATHABLE
QUICK DRY AIRMESH



PERFORATED EVA INSOLE &
DRAINABLE EVA MIDSOLE



SRA NON-MARKING, SLIP-RESISTANT
CHEVRON OUTSOLE

NEW

SPINDRIFT - MEN'S

XMS-0KRP | Whole Sizes: 7-14 | Kryptek™ Typhon

XMS-1KRP | Whole Sizes: 7-14 | Kryptek™ Yeti

XMS-2KRP | Whole Sizes: 7-14 | Kryptek™ Pontus

Packaged 12 pairs/case, bag



• Half Sizes available: 7-11



TYPHON

YETI

PONTUS

NEW

SPINDRIFT - WOMEN'S

XWS-2KRP | Whole Sizes: 5-11 | Kryptek™ Pontus

XWS-700 | Whole Sizes: 5-11 | Coral/White

XWS-300 | Whole Sizes: 5-11 | Seafoam/White

Packaged 12 pairs/case, bag



• Half Sizes available: 5-10



PONTUS

CORAL

SEAFOAM

AIRMESH

You can wear these fishing or for any boating excursion. These XTRATUF® deck shoes not only look and feel great, but also keep you safe and sure-footed, thanks to our signature non-marking, slip-resistant Chevron outside.



PU/EVA COMFORT INSOLE



BREATHABLE QUICK DRY AIRMESH



SRA NON-MARKING, SLIP-RESISTANT CHEVRON OUTSOLE



NEW

SHARKBYTE AIRMESH - MEN'S

XSAM-900 | Whole Sizes: M 5-14 | Royal Blue

XSAM-200 | Whole Sizes: M 5-14 | Chocolate

Airmesh Upper | PU/EVA Insole

Packaged 6 pairs/case, box



• Half Sizes available: 7-12



RIPTIDE - MEN'S

22200 | Whole Sizes: M 7-14 | Gray/Orange

22000 | Whole Sizes: M 7-14 | Black/White

Airmesh Upper | PU/EVA Insole

Packaged 6 pairs/case, bag



• Half Sizes available: 7-11



RIPTIDE - WOMEN'S

22202 | Whole: 6-11 | Blue

22409 | Whole: 6-11 | Brown

Airmesh Upper | PU/EVA Insole

Packaged 6 pairs/case, box



• Half Sizes available: 6-10



NEW

CHUMRUNNER CANVAS - MEN'S

XMC-200 | Whole Sizes: M 5-14 | Blue
 XMC-600 | Whole Sizes: M 5-14 | Red
 XMC-000 | Whole Sizes: M 5-14 | Black

Canvas

Packaged 6 pairs/case, bag



• Half Sizes available: 5-11



CHUMRUNNER - MEN'S

22401 | Whole Sizes: 7-14 | Chocolate

Nubuc Leather

Packaged 6 pairs/case, bag



• Half Sizes available: 7-12



FINATIC II - MEN'S

22306 | Whole Sizes: 7-14 | Chocolate
 22307 | Whole Sizes: 7-14 | Tan

Premium Full Grain Leather |
 Pigskin lined Ortholite™ Memory foam insert

Packaged 6 pairs/case, box



• Half Sizes available: 7-12



FINATIC II - WOMEN'S

22308 | Whole Sizes: 6-11 | Chocolate/Tan
 22310 | Whole Sizes: 6-11 | Gray/Blue

Premium Full Grain Leather |
 Pigskin lined Ortholite™ Memory foam insert

Packaged 6 pairs/case, box



• Half Sizes available: 6-10

SLIP-ONS

When you make a living on the water it is critical that your attire is versatile enough to perform well both on the boat and off. The Yellowtail provides all day comfort while also looking good enough to wear to dinner.



EVA MIDSOLE FOR ADDED COMFORT



DROP-IN HEEL



SRA NON-MARKING, SLIP-RESISTANT CHEVRON OUTSOLE



NEW

YELLOWTAIL SLIP-ON - MEN'S

- XMH-900 | Whole Sizes: 7-14 | Chocolate/Tan
- XMH-100 | Whole Sizes: 7-14 | Grey
- XMH-200 | Whole Sizes: 7-14 | Royal Blue/Grey

Packaged 12 pairs/case, bag



• Half Sizes available 7-12



NEW

YELLOWTAIL SLIP-ON - WOMEN'S

- XWH-202 | Whole Sizes: 6-11 | Sky Blue
- XWH-100 | Whole Sizes: 6-11 | Grey/Seafoam
- XWH-200 | Whole Sizes: 6-11 | Royal Blue/Grey

Packaged 12 pairs/case, bag



• Half Sizes available 6-10

SHARKBYTE



SHARKBYTE - MEN'S & WOMEN'S

- 22501 | Whole Sizes: M 7-14 | Chocolate
- 22504 | Whole Sizes: W 6-11 | Chocolate

Nubuc Leather

Packaged 6 pairs/case, box



• Half Sizes available: **M** 7-12, **W** 6-10



NEW

SHARKBYTE - MEN'S

- XSB-000 | Whole Sizes: M 5-14 | Black

Nubuc Leather

Packaged 6 pairs/case, box



• Half Sizes available 5-12

PERFORMANCE SANDALS

Flip-flops are often times the preferred footwear of choice for many warm water anglers. It's important the choice of flip-flop keeps the angler in the shoe and provides sure footing. The North/South Shore features XTRATUF's signature non-marking slip-resistant outsole, the same sole featured on our iconic Legacy boot. The molded foot cradle holds your foot in the flip-flop while the Chevron outsole keeps you sure footed while you fight the fish on the other end of the line.



TRIPLE DENSITY BOTTOM FOR COMFORT



FOOT CRADLE FOR STABILITY



SRA NON-MARKING, SLIP-RESISTANT CHEVRON OUTSOLE



NEW

SOUTH SHORE - MEN'S

- XMF-900 | Whole Sizes: M 7 - 15 | Chocolate
- XMF-904 | Whole Sizes: M 7 - 15 | Tan/Brown
- XMF-000 | Whole Sizes: M 7 - 15 | Black/Blue

Full Grain Leather

Packaged 12 pairs/case, bag



NEW

SOUTH SHORE - WOMEN'S

- XWF-900 | Whole Sizes: W 5 - 11 | Chocolate
- XWF-300 | Whole Sizes: W 5 - 11 | Grey/Seafoam
- XWF-700 | Whole Sizes: W 5 - 11 | Tan/Coral

Full Grain Leather

Packaged 12 pairs/case, bag



NEW

NORTH SHORE - MEN'S

- XMN-100 | Whole Sizes: M 7 - 15 | Grey
- XMN-200 | Whole Sizes: M 7 - 15 | Navy

Packaged 12 pairs/case, box



NEW

NORTH SHORE - WOMEN'S

- XWN-700 | Whole Sizes: W 5 - 11 | Coral
- XWN-300 | Whole Sizes: W 5 - 11 | Seafoam

Packaged 12 pairs/case, box



ANKLE DECK BOOTS

The XTRATUF® Deck Boot collection has been crafted specifically for sport and recreational fishermen. Anglers are athletes and they need proper footwear to help them perform at their best. We've created lightweight silhouettes with the same XTRATUF® non-marking, slip-resistant Chevron outsole.



XPRESSCOOL™ LINING



PULL-ON TABS



SRA NON-MARKING, SLIP-RESISTANT CHEVRON OUTSOLE



6" KRYPTEK® ANKLE DECK BOOT - MEN'S

- 22800 | Whole Sizes: M 7 - 14 | Yeti White
- 22805 | Whole Sizes: M 7 - 14 | Pontus Blue
- 22737 | Whole Sizes: M 7 - 14 | Mandrake

Packaged 4 pairs/case, box



NEW

6" KRYPTEK® ANKLE DECK BOOT - WOMEN'S

- XWAB-1KRP | Whole Sizes: W 5 - 11 | Yeti White
- XWAB-2KRP | Whole Sizes: W 5 - 11 | Pontus Blue

Packaged 4 pairs/case, box



6" ANKLE DECK BOOT - MEN'S

- 22733 | Whole Sizes: M 7 - 14 | Navy/Red
- 22734 | Whole Sizes: M 7 - 14 | Chocolate/Tan
- 22735 | Whole Sizes: M 7 - 14 | Gray/Yellow
- 22736 | Whole Sizes: M 7 - 14 | Black

Packaged 4 pairs/case, box



NEW

6" ANKLE DECK BOOT - WOMEN'S

- XWAB-200 | Whole Sizes: W 6 - 11 | Navy/Pink
- XWAB-300 | Whole Sizes: W 6 - 11 | Seafoam
- XWAB-700 | Whole Sizes: W 6 - 11 | Grey/Coral

Packaged 4 pairs/case, box



DECK BOOTS



COMMANDER

27000 | Whole Sizes: M 7 - 14 | Gray / Tan

27009 | Whole Sizes: M 7 - 14 | Chocolate / Tan

Packaged 6 pairs/case, box



12" DECK BOOT

22702 | Whole Sizes: M 7 - 14 | Chocolate / Tan

22712 | Whole Sizes: M 7 - 14 | Gray / Yellow

22732 | Whole Sizes: M 7 - 14 | Navy / Red

22722 | Whole Sizes: M 7 - 14 | Yeti / White

Packaged 4 pairs/case, box



NEW

GREENHORN

XGH-200 | Whole Sizes: Unisex 5 - 15 | Navy

Packaged 4 pairs/case, box



NEW

11" SHRIMP BOOT

75136 | Whole Sizes: M 5 - 15 | White

75137 | Whole Sizes: M 5 - 15 | Navy

Anti-Microbial Memory Foam Insert

Packaged 6 pairs/case, bag



THE LEGACY 2.0 COLLECTION

We've been outfitting commercial fishermen for more than 50 years with the Legacy Collection and in that time we've taken our learnings and created the New Legacy 2.0. This boot is engineered to withstand the world's toughest conditions. We have engineered this boot from the ground up. First we started with a brand new form fitting last, designed a brand new outsole that passes SRC slip-resistant rating, added a textured heel for easy on/off that won't get caught in gill nets, contoured the topline binding so it does not rub harshly against your leg, and finally we've included a Polyurethane comfort insole.



ACID & CHEMICAL RESISTANT



TRIPLE-DIPPED NEOPRENE



SRC NON-MARKING, SLIP-RESISTANT CHEVRON OUTSOLE



Scalloped Top Line

The scalloped top line avoids rubbing the back of the leg

Acid/Chemical Resistant Upper

Triple-dipped latex neoprene is naturally resistant to organic and inorganic oils and fatty acids

Brand New Last

The brand new form fitting last makes for a proper fit for the modern fisherman

Textured Heel for easy on/off

The textured heel provides for easy on/off capabilities while also being subtle enough not to get caught in gill nets

New Outsole Design

The new outsole design is rated as SRC slip-resistant, the highest level of slip-resistance awarded

Composite Toe

A composite toe is added to provide maximum protection in a lightweight package

New Bib Guard

An extra protective layer of rubber was added in the forefoot area to prevent wear when foul weather gear is worn

New Shin Guard

An extra layer of rubber was added to prevent wear to shin area

LEGACY 2.0



15" COMPOSITE TOE INSULATED

22290G | Whole Sizes: M 7-15 | Copper/Tan

Packaged 6 pairs/case, box



15" PLAIN TOE INSULATED

22291G | Whole Sizes: M 7-15 | Copper/Tan

Packaged 6 pairs/case, box



15" COMPOSITE TOE

22292G | Whole Sizes: M 7-15 | Copper/Tan

Packaged 6 pairs/case, box



15" PLAIN TOE

22293G | Whole Sizes: M 7-15 | Copper/Tan

Packaged 6 pairs/case, box





THE LEGACY COLLECTION

All boots within the Legacy collection are 100% waterproof with unique performance features. Each boot is made with our signature triple dipping technique, which creates a seamless barrier that is highly resistant to many organic and inorganic acids, chemicals and contaminants. Our latex neoprene is ozone resistant, and is softer, lighter, and far more pliable than ordinary rubber. Cushioned insoles with arch support help fight fatigue and stress on the legs and back. All XTRATUF® Legacy boots come with a non-marking, slip-resistant Chevron outsole that provides unparalleled traction on any surface in the most extreme conditions. Insulated styles come with built-in Polymeric Foam insulation. This insulation package will keep your feet warm even when it is -10° F.



ACID & CHEMICAL RESISTANT



TRIPLE-DIPPED NEOPRENE



SRA NON-MARKING, SLIP-RESISTANT CHEVRON OUTSOLE

Triple-Dipped Rubber

XTRATUF dipped neoprene footwear is triple-dipped to create a seamless coating of rubber that is highly resistant to many organic and inorganic chemicals. Vulcanizing further seals and strengthens this superior watertight material

Neoprene Latex Rubber

Neoprene latex rubber is softer, lighter and far more pliable than ordinary rubber, making neoprene boots more comfortable and flexible

Hand-Layered Construction

Hand-layered construction allows flex and strength at critical stress points

Heel Counters

Fabric Lining

Toe and Heel Guards



Slip-Resistant Non-Marking Outsole Tread

Breathe-O-Prene® Insoles



22274G PLAIN TOE

22280G SIDE GUSSET

15" PLAIN TOE INSULATED

22274G | Whole Sizes: M 5-14 | Copper/Tan

22280G | Whole Sizes: M 5-14 | Copper/Tan

Packaged 6 pairs/case, box



22272G PLAIN TOE

22279G SIDE GUSSET

15" PLAIN TOE

22272G | Whole Sizes: M 3-15 | Copper/Tan

22279G | Whole Sizes: M 3-15 | Copper/Tan

Packaged 6 pairs/case, box





22271G

22273G INSULATED

15" STEEL TOE

22273G | Whole Sizes: M 3-15 | Copper/Tan | Insulated

22271G | Whole Sizes: M 3-15 | Copper/Tan

Steel toe meets ASTM F2413-11 M I / 75 C / 75

Steel toe meets Canadian Standard CSA Z195-09

Packaged 6 pairs/case, box



22834G CAMO

22172G PLAIN TOE

12" PLAIN TOE

22172G | Whole Sizes: M 5-14 | Copper/Tan

22834G | Whole Sizes: M 7-14 | Copper/Tan/Camo

22289G | Whole Sizes: M 7-14 | Yeti White

22294G | Whole Sizes: M 7-14 | Pontus Blue

Packaged 6 pairs/case, box

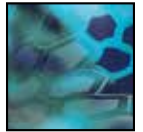


NEW



Yeti White

NEW



Pontus Blue



6" PLAIN TOE - LOW CUT

22170G | Whole Sizes: M 3-14 | Copper/Tan

Packaged 12 pairs/case, box



15" WOMEN'S LEGACY LACE, GUSSET

22823G | Whole Sizes: W 6-11 | Women's Last

Copper/Tan

Packaged 6 pairs/case, box



ELITE COLLECTION

The Elite Collection is designed to provide the protection and durability of a Legacy boot with unmatched comfort for long days at sea or long hours on the dock. Using the Honeywell Proprietary RDR™ oil/chemical resistant compound, this boot is resistant to many organic and inorganic acids, oils, chemicals and contaminants. Built with a Spandura® covered 5mm neoprene bootie; this allows the boot to be comfort rated to -20° F. All XTRATUF® Elite boots come with a non-marking, slip-resistant Chevron outside that provides sure-gripping traction on any surface.



SPANDURA NEOPRENE



OIL & CHEMICAL RESISTANT



NON-MARKING, SLIP-RESISTANT CHEVRON OUTSOLE



ELITE COLLECTION



12" PLAIN TOE INSULATED

22612 | Whole Sizes: M 7 - 14 | Copper/Tan

Packaged 4 pairs/case, box



6" PLAIN TOE INSULATED ANKLE

22176G | Whole Sizes: M 7 - 14 | Copper/Tan

Packaged 4 pairs/case, box



15" PLAIN TOE INSULATED

22613 | Whole Sizes: M 7 - 14 | Copper/Tan

Packaged 4 pairs/case, box



THE SALMON SISTERS COLLECTION

Original designs by two young Alaskan fishermen, born and inspired by the wilderness of Alaska and the sustainable fisheries of the North Pacific. Salmon Sisters products are designed in Alaska, inspired by nautical tradition, and made for a community of fishermen, adventurers, and ocean-enthusiasts. Salmon Sisters strives to make their garments the ones you dress up, dress down, and get dirty because they're just too cool and comfy to take off. Salmon Sisters works with organizations that support conservation of wild spaces and wild seafood and for every sale made, Salmon Sisters donates a can of wild Alaska salmon to the Alaska Food Bank.



SALMON
SISTERS
HOMER, ALASKA EST. 2012



15" SALMON SISTER LEGACY

22390 | Whole Sizes: W 6-11 | Women's Last

Copper/Fish Print

Packaged 6 pairs/case, box



15" SALMON SISTER LEGACY

22490 | Whole Sizes: W 6-11 | Women's Last

Copper/Octopus Print

Packaged 6 pairs/case, box



12" SALMON SISTER LEGACY

22391 | Whole Sizes: W 6-11 | Women's Last

Copper/Fish Print

Packaged 6 pairs/case, box



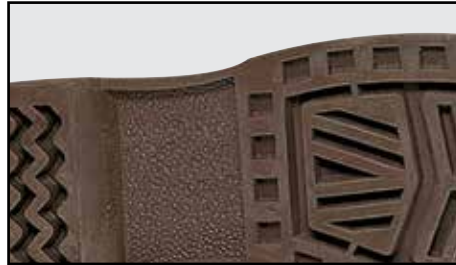


KIDS LEGACY

These Kids XTRATUF® boots are designed to keep your kids feet warm and dry. They have the same iconic look and feel as their adult counterparts and are built to tackle any puddles they might get themselves into.



EASY VELCRO OPENING



CHEVRON OUTSOLE



LACE DETAIL



LEGACY BABY BOOTIE

21192B | Sizes: Infant 1 - 4 | Copper / Tan



9" KID'S LEGACY INSULATED

22168G | Whole Sizes: C 5 - 13, Y 1 - 6 | Copper / Tan

Packaged 6 pairs/case, box



8" KID'S LEGACY

22680G | Whole Sizes: Y 1 - 4 | Copper / Tan

22681G | Whole Sizes: C 5 - 13

22685G | Whole Sizes: Y 1 - 7 | Kryptek Pontus

22684G | Whole Sizes: C 5 - 13

Packaged 6 pairs/case, box



APPAREL/ACCESSORIES



LOGO TEE

XA-100M | Whole Sizes: M S - 2XL | 4.3 oz
XA-102W | Whole Sizes: W XS - XL | 4.3 oz
100% Jersey Cotton



LONG SLEEVE LOGO TEE

XA-101M | Whole Sizes: M S - 2XL | 4.3 oz
100% Jersey Cotton



BABY ONESIE

XA-104B | Infant's Whole Sizes: 6M - 24M | 4.5 oz
100% Jersey Cotton



HOODIE

XA-103M | Whole Sizes: M S - 2XL | 10.0 oz
80/20 Cotton/Polyester, prelaundered



WOMEN'S FLEECE LINERS

28115 | (S) 6-7, (M) 8-9, (L) 10-11 | Brown
28116 | (S) 6-7, (M) 8-9, (L) 10-11 | Tan
Packaged 25 pairs/case, bag | Order 1 size larger



BAMA SOKKET

28500 | Sizes: 5 - 15
Packaged 30 pairs/case, bag | Order 1 size larger

ACCESSORIES



NEW

KRYPTEK® TRUCKER CAP

XA-3KRPH | OSFA | Kryptek® Highlander | Packaged 24/bag

XA-2KRPH | OSFA | Kryptek® Pontus | Packaged 24/bag



BASEBALL SNAPBACK CAP

XA-109H | OSFA | Navy/White | Packaged 24/bag

XA-110H | OSFA | Brown/Tan | Packaged 24/bag



TUNA FLAT BRIM SNAPBACK CAP

XA-107H | OSFA | Camo | Packaged 24/bag



SALMON FLAT BRIM SNAPBACK CAP

XA-108H | OSFA | Brown/White | Packaged 24/bag



BEANIE

XA-105H | Unisex OSFA

60% Cotton, 40% Acrylic | Packaged 24/bag



3/8" FELT INSOLE

28114 | Whole Sizes: M 3-15

Packaged 100 pairs/case, bag



COOLIE

22100G | OSFA | Packaged 50/case





Honeywell Safety Products
900 Douglas Pike
Smithfield, RI 02917
Toll Free Phone: 800.777.9021
Fax: 800.267.6809

©2017 Honeywell International, Inc

Inquiries:


HSPFootwearCustomerService@Honeywell.com


Orders:

HSPUSorders@Honeywell.com

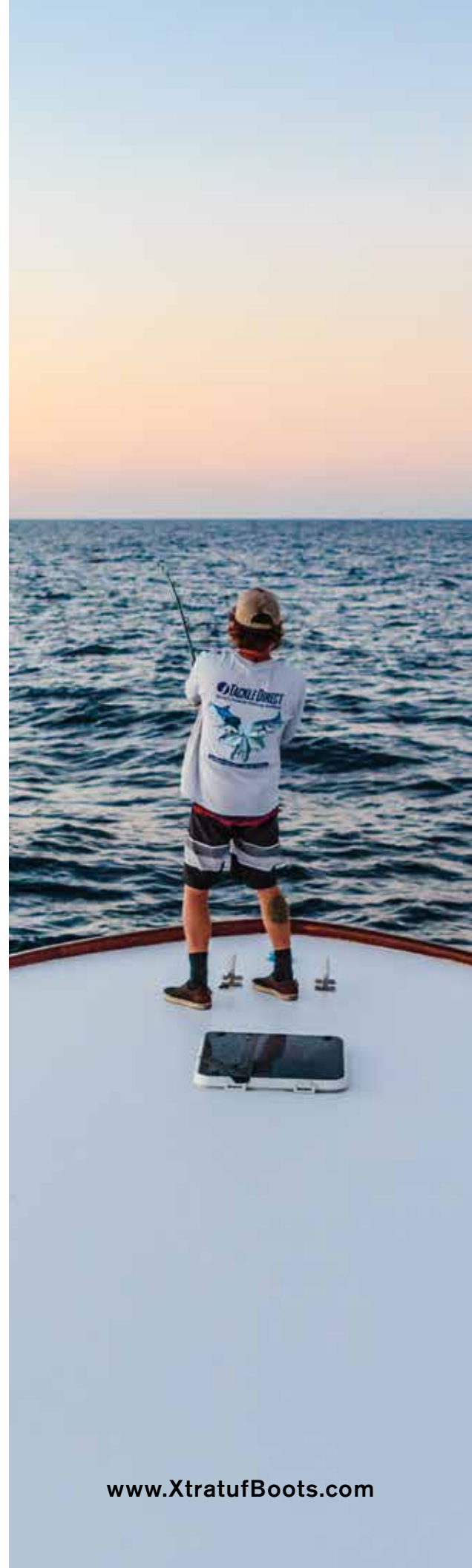
Warranty details: See price list

XTRA.207

 [@Facebook.com/Xtratuf](https://www.facebook.com/Xtratuf)

 [@xtratufboots](https://www.instagram.com/xtratufboots)

 [@XtratufBoots](https://twitter.com/XtratufBoots)



www.XtratufBoots.com