

Morning Pride® EDGE Turnout Gear

Honeywell



Proven Performance
and Reliability



MORNING PRIDE

by Honeywell



MORNING PRIDE

by Honeywell

**PROVEN
PERFORMANCE
AND RELIABILITY**

**ADVANCED DESIGN
MEETS CLASSIC
STYLING.**

DESIGNED WITH AMPLE
DISPLACEMENT FOR
ALL-AROUND
**MOBILITY,
COMFORT, AND
PERFORMANCE.**





MORNING PRIDE® EDGE IS MADE FOR THE FIREFIGHTER WHO WANTS THE LATEST TECHNOLOGY, YET WISHES TO KEEP A TRADITIONAL CUT. PROVEN AND VERSATILE IN ALL ENVIRONMENTS, EDGE DELIVERS THE HIGH LEVEL OF PERFORMANCE YOU NEED TO DEPEND ON.

EDGE AT A GLANCE

Available Coat and Pant Closure Systems

- All paired with hook and loop
- Zipper under flap
 - Hooks and dees inside flap



Flex-back Pleats
Allow better movement and reach

Underarm Gussets in All Three Layers

- Maximize comfort
- Minimize coat rise

Stand-up Collar and Linkable Throat Tab
Allow fast donning

Bar-tack Reinforced Stress Points
For maximum durability

Ergonomically Curved Two-piece Arm Design
Follows the line of the arm for effortless movement

Full-cut Body Design
For great all-around comfort

Full-bellows Coat Pockets (9" x 9")
For ample capacity

Uninterrupted Zip-in Liner

- Eliminates gaps in thermal protection
- Prevents detachment of liner
- Is easily removed for washing or decontamination



Side Adjustment Pull-tabs in Tough and Durable Nomex® Webbing
Waist adjustment of 4" to 6" provides a better, tailored fit

Button Suspenders

Internal Adjustable Belt System

- Offers flexible adjustability without bulk
- Allows waist size to adjust up to 4"
- Does not interfere with an SCBA belt

Uninterrupted Zip-in Liner

- Eliminates gaps in thermal protection
- Prevents detachment of liner
- Is easily removable for washing or decontamination

Full-bellows Pant Pocket (10" x 10")
For ample capacity

Choice of Oversized Knee and Cuff Reinforcements
Customizable to your needs, for enhanced protection

Offset Seams Between Each Layer
Reduce Abrasion
Seams on all three layers are offset to prevent abrasion and increase comfort

DuPont™ Nomex® | **DuPont™ Kevlar®**

DuPont™ Nomex® and Kevlar® are trademarks or registered trademarks of E.I. du Pont de Nemours and Company.

Continuous Zip-in Liner Provides **Uninterrupted Protection**



Gaps between the outer shell and inner liner can leave a firefighter with only one layer of protection, exposing the wearer to an increased risk of thermal injury.

EDGE utilizes an engineered zipper system to attach the outer shell to the moisture barrier and thermal liner, completely eliminating the risk of gaps between the outer shell and the thermal liner frequently found in snap-in liner systems.

ZIP-IN LINER FEATURES

- Eliminates gaps in thermal protection
- Prevents detachment of liner
- Easily removed for washing or decontamination
- Liner overlap design delivers enhanced comfort

In-collar DRD™ Proprietary Design **Allows Easy Access** Even with a Gloved Hand



Designed to aid in the rescue of an incapacitated or injured wearer, the Drag Rescue Device (DRD) is a critical safety component of any turnout jacket. EDGE offers the only in-collar DRD on the market. This proprietary design places the DRD access port in the collar instead of further down the back of the jacket, ensuring clear visibility and easy access – even when the downed firefighter wears a breathing apparatus.

IN-COLLAR DRD FEATURES

- Reflective lettering for high visibility in low light conditions
- Flexible Kevlar® webbing for strength and comfort
- Unique, non-removable design prevents loss and improper installation
- Performance exceeds NFPA 1971

Articulating DRD Designed to **Evenly Distribute the Weight**



The Morning Pride® patented Articulating Drag Rescue Device is unlike any other DRD on the market.

The articulating nature of this design means that both underarms are engaged when the rescuer must pull from an angle. In contrast, non-articulating designs will only pull on both underarm areas if the rescuer can make a straight pull. Engaging both sides of the downed firefighter should help minimize the chance of pulling the coat off or failing to gain effective leverage on the victim.

DuPont™
Kevlar®

DuPont™ and Kevlar® are trademarks or registered trademarks of E.I. du Pont de Nemours and Company.

INNOVATIVE FEATURES

TES™ (Thermal Enhancement System)
Creates Extra Thermal Protection
 Without Adding Bulk

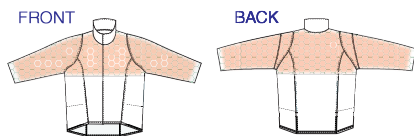


The TES™ (thermal enhancement system) design dramatically increases TPP (thermal protective performance) with no significant impact on THL (total heat loss). This means extra protection without added bulk.

TES™ consists of a layer of Nomex® mesh engineered into the garment design on the upper torso and arms – all areas typically exposed to compression and the highest thermal load.

TES™ Advantages

- Superior protection of the entire upper torso and arms when compared to other thermal enhancement systems
- Increased thermal protection with no significant impact on THL



Flex-back Pleats
Allow Maximum Movement and Reach



Dynamic Flex-Back Pleat was designed to allow the sleeve to expand freely in order to increase the reach and movement in the arms without adding fabric bulk. This construction is replicated in the thermal liner and moisture barrier, thus fully optimizing the Flex-Back design benefits.

In addition to the Dynamic Flex-Back Pleat, EDGE features underarm gussets in all three Layers, offering optimal comfort and minimum coat rise. A perfect fit!

Dead Air Panels
Provide Lightweight, Non-restrictive Insulation



Using X-9 engineered thermal padding, dead air panels, found only in Morning Pride® garments, increases conductive compressive heat resistance (CCHR) in critical areas significantly higher than the NFPA standard. No other system combines such results with a lightweight, highly vapor-permeable design, and the low cost found in Morning Pride® dead air panels.

MORE THAN 2x
THE NFPA MINIMUM PROTECTION REQUIREMENT

Hybrid Wristlet Increases Comfort and Dexterity of the Hand



The hybrid wristlet helps create additional comfort for the firefighter and will not get in the way of movement. This wristlet is attached to the waterwell that is then attached to the outer shell.

Thanks to this design exclusive to Morning Pride® EDGE gear, you won't have to worry about contaminated water running down your sleeves from your waterwells when you raise your arms. You stay safe and dry!

Dyna-Fit "Rig Friendly" Removeable Suspenders Hold Pants Securely



These patented suspenders have no mid-back hardware and comfortably stay in place because of an interplay of the suspender loops. They feature rig-friendly snap attachments (instead of buttons) preventing suspender rotation when the pants are being donned.

Internal Adjustable Belt System Improves Comfort and Adjustability



What is the most inconvenient part of a belt on your turnout gear pants? For many it's the buckle: it can be bulky, it doesn't offer the adjustability you're looking for and often enough it's uncomfortable when moving.

Morning Pride® EDGE offers a unique Internal Adjustable Belt System that integrates an elasticized belt in the back of the pants, between the thermal liner and the outer shell. The belt is secured with loops and allows you to adjust your waist size up to 4 inches. The best part...it's comfortable, expandable and removable. With the Internal Adjustable Belt System, you control the fit of your waist!

MORE OPTIONS MORE CUSTOMIZATION



HIGH-PERFORMANCE OPTIONAL FEATURES

CERTIFIED BELTS AND HARNESSES

UL classified to NFPA 1983, current edition
Components UL classified to NFPA 1971, current edition



Shown with external leg loops



Shown with internal leg loops



SPIDER™ HARNESS

Integrated Class II safety and rescue harness with A-frame

- Built-in two-inch increments for even waist sizes 32-inch and above
- Compatible with internal or external leg loop configurations
- Integrated pant also accepts Patriot Harness and Life Grip Belt
- Extra stable A-frame stows on waist belt for bailout and ladder work
- Separate sliding D-ring on the A-frame for bailout system pre-connect

PATRIOT™ HARNESS

Integrated Class II safety and rescue harness

- Built-in two-inch increments for even waist sizes 32-inch and above
- Compatible with internal or external leg loop configurations
- Integrated pant also accepts Spider Harness and Life Grip Belt
- Separate sliding D-ring for bailout system pre-connect
- Optional tether stows at waist for use with ladder hook

LIFE GRIP™ LADDER/ESCAPE BELT

Functional and fully adjustable escape belt

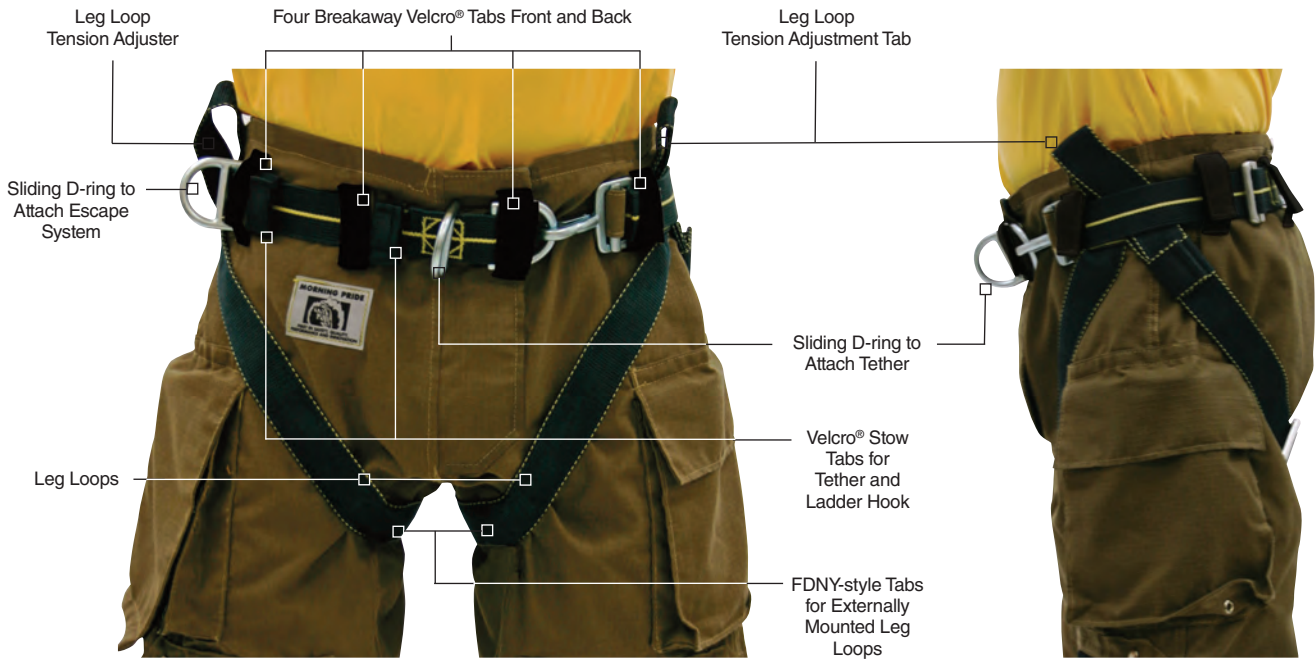
- Built-in two-inch increments for all even-waist-size bunker pants
- The most economical yet fully featured ladder/escape belt
- Separate sliding D-ring for bailout system pre-connect
- Use with integrated pant adaptation or simple belt loops
- Optional tether stows at waist for use with ladder hook

INTEGRATED HARNESS PANT SYSTEM

Parallel engineered for seamless compatibility
Constructed of 100% DuPont Kevlar® webbing and thread

PANT WITH EXTERNAL LOOPS

Easy to inspect, remove and install
(Patriot Harness shown)



PANT WITH INTERNAL LOOPS

Protected from UV and abrasion
(Patriot Harness shown)



Carabiner not included.

DESIGNED TO WORK IN UNISON

Intuitive Leg Adjustments

- Just grab and pull to tighten
- Thumb the adjuster hardware to loosen (internal or external)



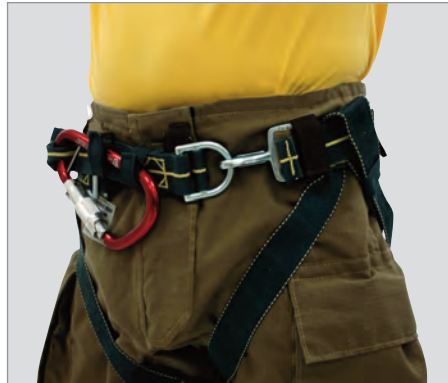
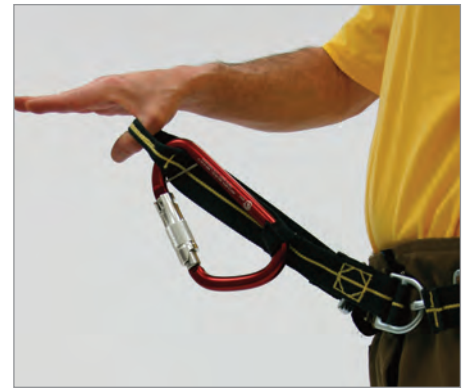
Integrated Closure

- Simply zip and clip
- Harness closure and pant closure become one
- Donning and doffing are almost unaffected, requiring a short learning curve



Built-in Spider™ Harness A-frame

- Optional ladder hook stows in A-frame when not in use
- Separate sliding D-ring for escape system pre-connect



ALL LEG LOOPS, CLOSURES AND A-FRAMES
ARE **INTUITIVELY ADJUSTABLE**

ALL HARDWARE IS IN HOT-FORGED ALLOY
STEEL FOR **COMPLETE SAFETY**

Heat-channel Knee



Enhanced thermal protection in the knee area is critical. The proprietary Heat-channel Knee offers three to four times the NFPA minimum level requirement, providing you with maximized thermal and compressive protection, while the unique flexible design offers added comfort and mobility.

BiFlex Heat-channel Knee



The BiFlex Heat-channel Knee utilizes additional lateral panels for even greater flexibility, maximizing comfort and protection with unparalleled conductive and compressive heat resistance (CCHR). It provides five layers of protection in the primary kneeling area and reduced layering for less centered areas.

3D BiFlex Heat-channel Knee



With a combination of concave and convex seams, the 3D BiFlex Heat-channel Knee creates a three-dimensional shape that enhances mobility while making room for removable knee pads. This knee allows fire departments to provide varying levels of protection that are job specific. Waterproof knee pads are available in aramid and moisture barrier or 1/4" silicone foam padding (patent pending).

Options – Coat

Wristlets



Nomex® knit 3¼" long with neoprene waterwell

Nomex® knit with 6" thumb hole and neoprene waterwell

Reinforcements



Sleeve cuffs, double stitched

Elbow patches 8" x 6"

Shoulder patches

Pockets

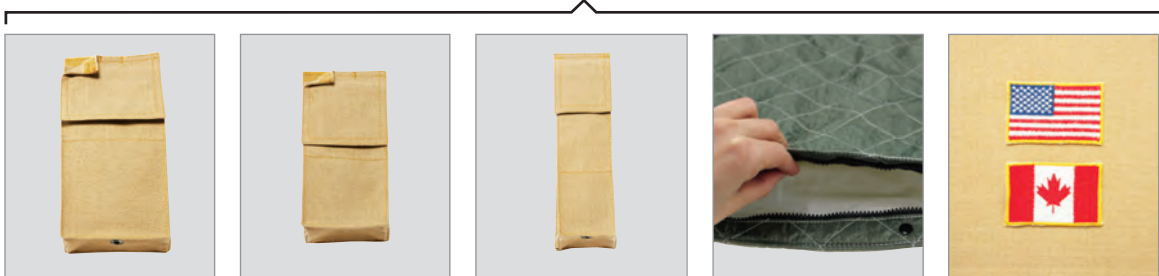


Semi-bellows pocket 9" x 9"

Pocket reinforced with Kevlar® pouch

Hand warmer pocket 9" x 9" full bellows

Device Pockets & Accessories



Large radio pocket 9" x 4½" x 2" with antenna port

Small radio pocket 7½" x 3½" x 2" with antenna port

2- or 3-cell flashlight pocket

Inspection port on thermal liner of coat and pant

American or Canadian flag



Microphone loop in webbing 1" x 2½"

Flashlight loop 2" x 2" with utility strap in webbing 1" x 12"

Glove holder in webbing 1" x 12"

Accessory hook on Hypalon® patch 3" x 2"

Accessory dee on Hypalon® patch 3" x 2"

Options – Pant

Suspenders



Removable suspenders, side quick-release buckle

Removable suspenders, New England style

Add 2" 3M™ Scotchlite™ triple trim

Add advanced foam technology padding for suspenders

Accessories



Waterdams

Knee patches

Reverse boot cut

Angled cuffs

Thermal Enhancements



Thermal Enhancement System (TES)

Dead air panels

Yoke padding (7" high): extra thermal layer

Knee pads: extra thermal layers

I-Tech Insertable Knee System



DuPont™ Nomex® and Kevlar® are trademarks or registered trademarks of E.I. du Pont de Nemours and Company.

Trim and Lettering Options

Trim Material



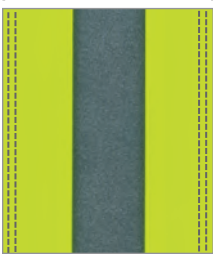
3" two-tone Reflexite® Brilliance

3" and 2" Reflexite® Brilliance

3" orange or lime two-tone 3M™ Scotchlite™

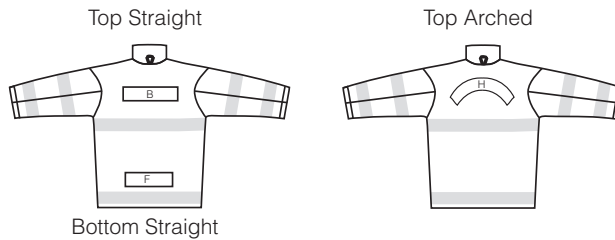
3" and 2" solid orange or lime 3M™ Scotchlite™

Trim Stitching



Double stitch on reflective trim

Name Patch Common Positioning



Name Patches



Permanent patches: 3 lengths

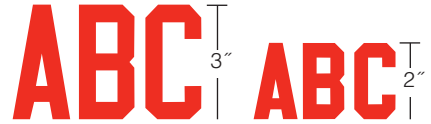


Removable patches: 2 lengths



Hanging name patch 4" x 19"

Lettering



2" or 3" sewn-on 3M™ Scotchlite™ solid orange, lime, or silver. 2" or 3" heat-set 3M™ Scotchlite™ solid orange or lime. 2" or 3" sewn-on Reflexite® solid lime and orange or Reflexite® Brilliance.

Trim Configurations

Standard – 2" or 3"



NFPA Standard – Front



NFPA Hi-viz – Back



NFPA Standard – Back



NFPA Combo – Back

New York – 2" or 3"



New York Standard – Front



New York Hi-viz – Back



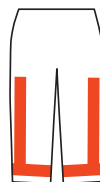
New York Standard – Back



New York Combo – Back



Standard



Hi-viz – Back

Exclusive Corporate Sponsor



Honeywell is proud to be the exclusive corporate sponsor of the United States Fire Administration/National Fallen Firefighters Foundation's National Fire Service Vulnerability Assessment Project.

Proudly Supporting



IAFC
International Association of Fire Chiefs



The IAFF
Fire Fighters Burn Foundation



Firefighter Cancer Support Network



International Association of Black Professional Fire Fighters



International Association of Women in Fire & Emergency Services



NFFF
National Fallen Firefighters Foundation



NVFC
National Volunteer Fire Council



FDSOA
Fire Department Safety Officers Association



Congressional Fire Services Institute



ISFSI
International Society of Fire Service Instructors



NFPA
National Fire Protection Association



FEMSA
Fire Equipment Manufacturers & Suppliers Association

Honeywell Life Safety

Honeywell First Responder Products
#1 Innovation Court
Dayton, Ohio 45414
Tel: 800-688-6148
www.HoneywellFirstResponder.com

